



# ZIP HYDROTAP MINIBOIL B

Order Code HT1017Z3

Zip HydroTap Miniboil, Boiling, Filtered water appliance featuring a stylish touch activated tap and a compact under bench command centre with externally mounted water filtration.

Manufacturing Code	2500AU0M2ZN1R
--------------------	---------------

Capacity	Residential
----------	-------------

Disability Options	Unavailable
--------------------	-------------



<b>Tap</b>	Zip HydroTap Miniboil CLASSIC Tap (Matte Black)
------------	-------------------------------------------------

<b>Water Pressure</b>	Min 172kPa - Max 700kPa
-----------------------	-------------------------

<b>Water Connection</b>	12.7mm BSP
-------------------------	------------

<b>Water Supply Requirements</b>	Cold
----------------------------------	------

<b>Water Valves</b>	Integrated 500kPa Pressure limiting valve and Dual Check Valve
---------------------	----------------------------------------------------------------

<b>Power Rating</b>	1.5kW 220-240V 50/ 60 Hz
---------------------	--------------------------

<b>Power Supply</b>	1 x 10Amp GPO
---------------------	---------------

<b>Dimensions</b>	H338mm x W212mm x D269mm
-------------------	--------------------------

<b>Product Approvals</b>	WaterMark, CE, RCM
--------------------------	--------------------

<b>Warranty</b>	12 months
-----------------	-----------

## Installation Requirements

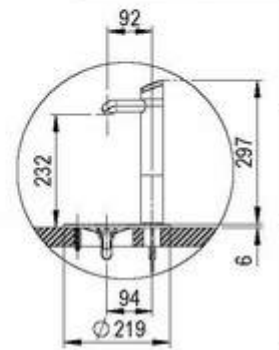
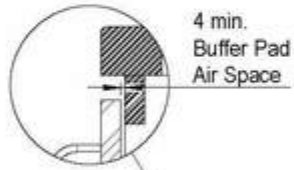
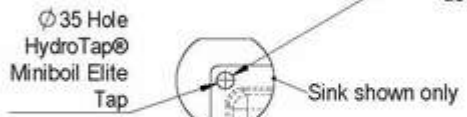
1. Installation and connection of your Zip HydroTap must be carried out by a qualified person, observing national and local regulations.
2. You will require suitable mains electrical and drinking water connections, plus waste water drainage all within 1.5 metres of the product.
3. HydroTap is air-cooled so discrete cabinetry cut-outs are required for ventilation.
4. Installation on most bench tops is straightforward however some stone bench tops may require a specialised cutting service.
5. If you live in a hard water area, we recommend installation of a Zip scale filtration kit.
6. Installation by Zip Professional Service can be arranged with a phone call or through [www.zipwater.com](http://www.zipwater.com)

### Installation Detail

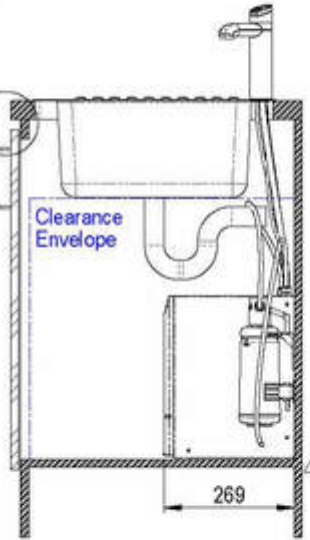
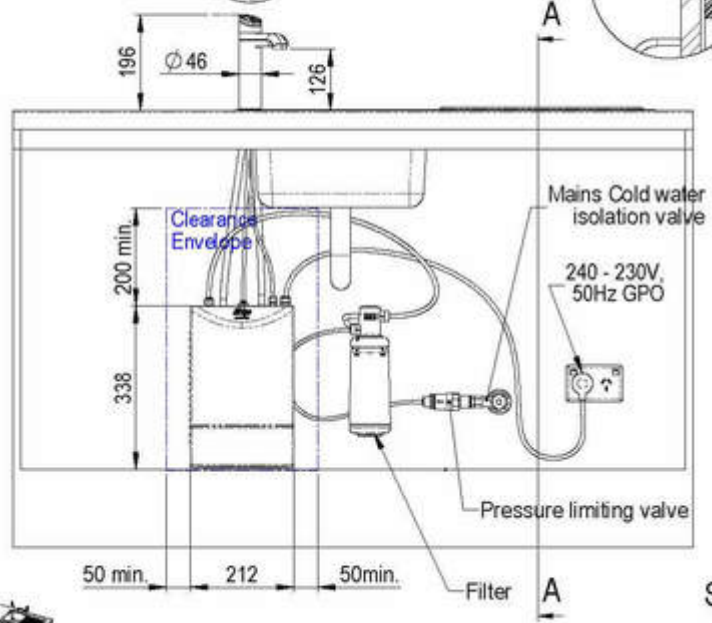
Table - Zip BOM (Assembly)					
Item Part	Qty	Description	Conty	Status	Dr / Issue
1	1	Zip MiniBoil Elite	Zip	Released	1
2	1	Zip HydroTap	Zip	Released	1
3	1	Zip Filter	Zip	Released	1
4	1	Zip Mains Cold water isolation valve	Zip	Released	1
5	1	Zip Pressure limiting valve	Zip	Released	1
6	1	Zip 240 - 230V, 50Hz GPO	Zip	Released	1
7	1	Zip 4 min. Buffer Pad	Zip	Released	1
8	1	Zip Air Space	Zip	Released	1
9	1	Zip Sink	Zip	Released	1
10	1	Zip Tap	Zip	Released	1
11	1	Zip Clearance Envelope	Zip	Released	1

REVISIONS				
No	Rev	Description	By	Iss
1	1	Initial Issue	Zip	1
2	2	Revised	Zip	2
3	3	Revised	Zip	3
4	4	Revised	Zip	4

⚠ Position the Tap such that it dispenses into the sink bowl with ample clearance for a cup or a tea pot. Alternatively, the Tap could be mounted away from the sink using a Zip Font available as an accessory.



DETAIL FONT SCALE 1 : 5



SECTION A-A SCALE 1 : 5



Zip Industries <b>Zip</b>	
Product Name	Assoy - Kitchen Layout MiniBoil-Classice
Product Code	KL002_39118
Revision	4
Issue Date	20/01/2018
Issue By	Zip
Issue For	Zip
Issue To	Zip
Issue From	Zip
Issue At	Zip
Issue By	Zip
Issue For	Zip
Issue To	Zip
Issue From	Zip
Issue At	Zip
Issue By	Zip
Issue For	Zip
Issue To	Zip
Issue From	Zip
Issue At	Zip

