



ZIP HYDROTAP MINIBOIL BA

Order Code HT1016

Zip HydroTap Miniboil, Boiling and Ambient, Filtered water appliance featuring a stylish touch activated tap and a compact under bench command centre with externally mounted water filtration.

| | |
|--------------------|---------------|
| Manufacturing Code | 2501AU0M4ZN1R |
|--------------------|---------------|

| | |
|----------|-------------|
| Capacity | Residential |
|----------|-------------|

| | |
|--------------------|-------------|
| Disability Options | Unavailable |
|--------------------|-------------|



| | |
|------------|--|
| Tap | Zip HydroTap Miniboil CLASSIC Tap (Chrome) |
|------------|--|

| | |
|-----------------------|-------------------------|
| Water Pressure | Min 172kPa - Max 700kPa |
|-----------------------|-------------------------|

| | |
|-------------------------|------------|
| Water Connection | 12.7mm BSP |
|-------------------------|------------|

| | |
|----------------------------------|------|
| Water Supply Requirements | Cold |
|----------------------------------|------|

| | |
|---------------------|--|
| Water Valves | Integrated 500kPa Pressure limiting valve and Dual Check Valve |
|---------------------|--|

| | |
|---------------------|--------------------------|
| Power Rating | 1.5kW 220-240V 50/ 60 Hz |
|---------------------|--------------------------|

| | |
|---------------------|---------------|
| Power Supply | 1 x 10Amp GPO |
|---------------------|---------------|

| | |
|-------------------|--------------------------|
| Dimensions | H338mm x W212mm x D269mm |
|-------------------|--------------------------|

| | |
|--------------------------|--------------------|
| Product Approvals | WaterMark, CE, RCM |
|--------------------------|--------------------|

| | |
|-----------------|-----------|
| Warranty | 12 months |
|-----------------|-----------|

Installation Requirements

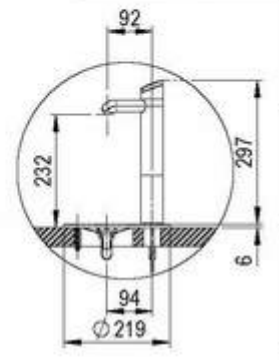
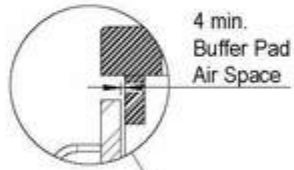
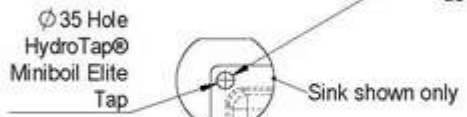
1. Installation and connection of your Zip HydroTap must be carried out by a qualified person, observing national and local regulations.
2. You will require suitable mains electrical and drinking water connections, plus waste water drainage all within 1.5 metres of the product.
3. HydroTap is air-cooled so discrete cabinetry cut-outs are required for ventilation.
4. Installation on most bench tops is straightforward however some stone bench tops may require a specialised cutting service.
5. If you live in a hard water area, we recommend installation of a Zip scale filtration kit.
6. Installation by Zip Professional Service can be arranged with a phone call or through www.zipwater.com

Installation Detail

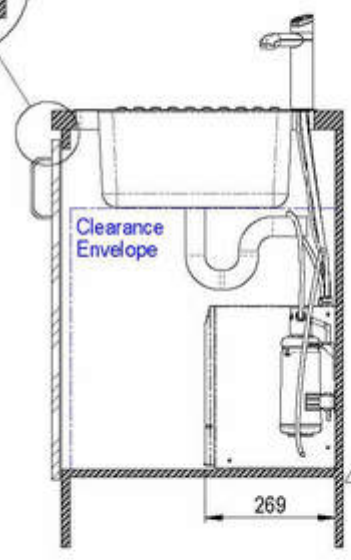
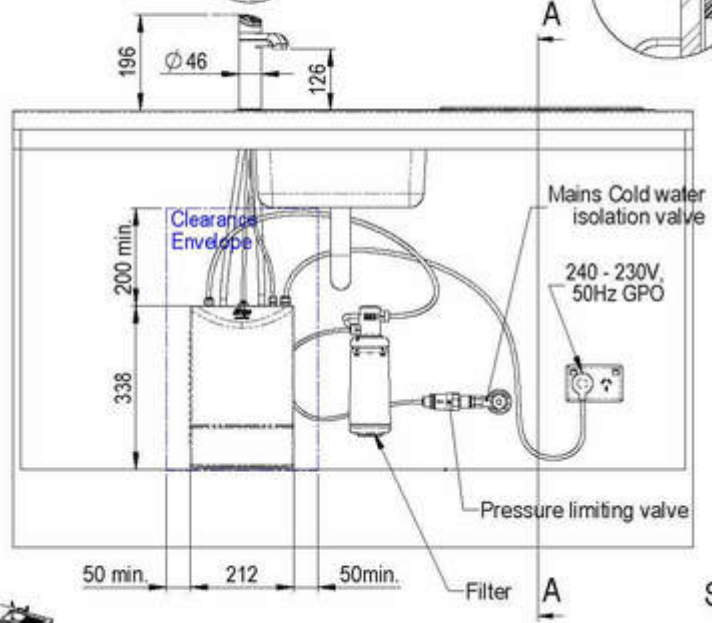
| Table - Zip BOM (Assembly) | | | | | |
|----------------------------|-----|--------------------------------------|-------|----------|------------|
| Item Part | Qty | Description | Conty | Status | Dr / Issue |
| 1 | 1 | Zip MiniBoil Elite | Zip | Released | 1 |
| 2 | 1 | Zip HydroTap | Zip | Released | 1 |
| 3 | 1 | Zip Filter | Zip | Released | 1 |
| 4 | 1 | Zip Pressure Limiting Valve | Zip | Released | 1 |
| 5 | 1 | Zip Mains Cold Water Isolation Valve | Zip | Released | 1 |
| 6 | 1 | Zip 240-230V 50Hz GPO | Zip | Released | 1 |
| 7 | 1 | Zip Sink | Zip | Released | 1 |
| 8 | 1 | Zip Tap | Zip | Released | 1 |
| 9 | 1 | Zip Filter | Zip | Released | 1 |
| 10 | 1 | Zip Pressure Limiting Valve | Zip | Released | 1 |
| 11 | 1 | Zip Mains Cold Water Isolation Valve | Zip | Released | 1 |
| 12 | 1 | Zip 240-230V 50Hz GPO | Zip | Released | 1 |
| 13 | 1 | Zip Sink | Zip | Released | 1 |
| 14 | 1 | Zip Tap | Zip | Released | 1 |

| REVISIONS | | | | |
|-----------|-----------------|-----|------------|----|
| Rev | Description | Rev | Date | By |
| 01 | Initial Release | 001 | 01/01/2018 | AD |
| 02 | Minor Changes | 002 | 01/01/2018 | AD |
| 03 | Final Release | 003 | 01/01/2018 | AD |

⚠ Position the Tap such that it dispenses into the sink bowl with ample clearance for a cup or a tea pot. Alternatively, the Tap could be mounted away from the sink using a Zip Font available as an accessory.



DETAIL FONT SCALE 1 : 5



SECTION A-A SCALE 1 : 5



| | |
|---------------------------|---|
| Zip Industries Zip | |
| Product Name | Assoy - Kitchen Layout MiniBoil-Classic |
| Product Code | KL002_39118 |
| Revision | 003 |
| Issue Date | 01/01/2018 |
| Issue By | AD |
| Issue For | AD |

