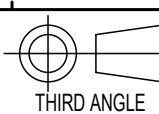


Table - Zip BOM (Assembly + Make/Buy)						
Item	Part	Rev	Description	Status	Qty	Make or Buy?
5	27200	A	Zip Hydrotap Booster MBX2 2.2kW 10A 230V	Production	1	Buy
7	84451	A	Tea 1/2" BSP Female (Brass)	Production	1	Buy
9	87722	B	Assy - Restrict-A-Flow with ø2.5 Hole	Production	1	Buy
10	802941	00	Elite Tap Boiling Ambient	Design	1	Buy
11	5301AU	01	Hydrotap G4 BAHA240 4in1 with Booster Boiling Ambient	Prototype	1	Buy
16	87953	A00	Reducer G3/8, 3/4, 1, 1.5	Design	1	Buy
24	875701	00	Classic Mixer Tap	Design	1	Buy



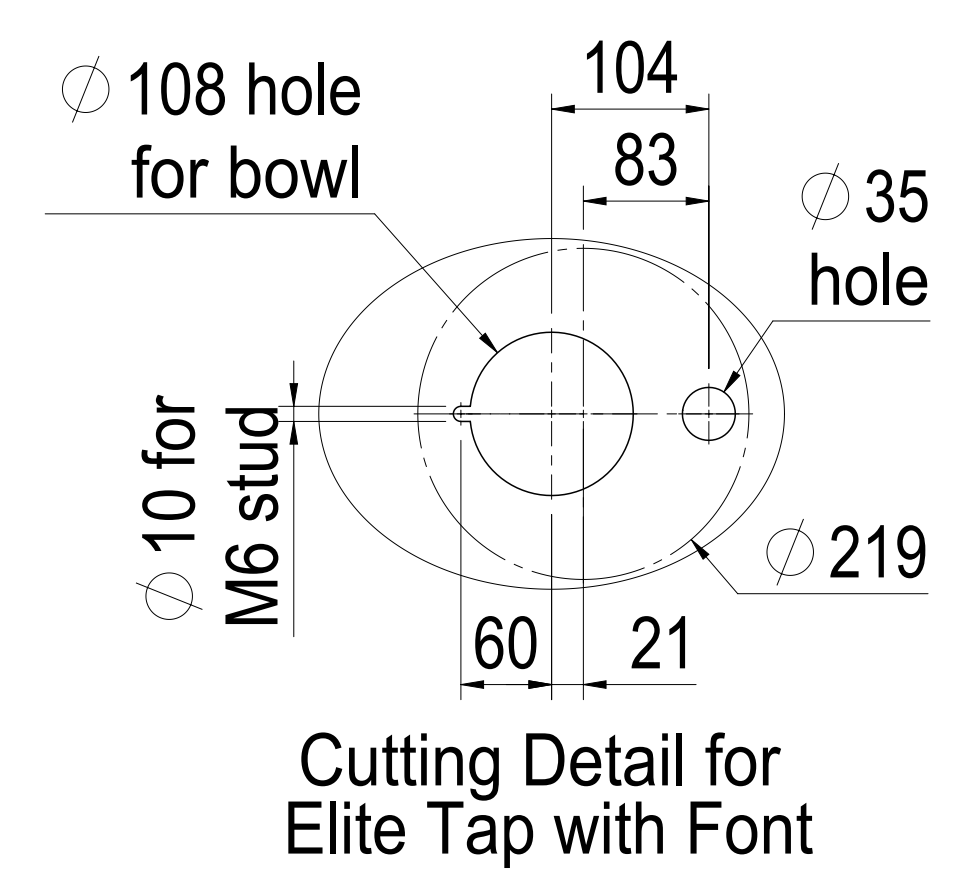
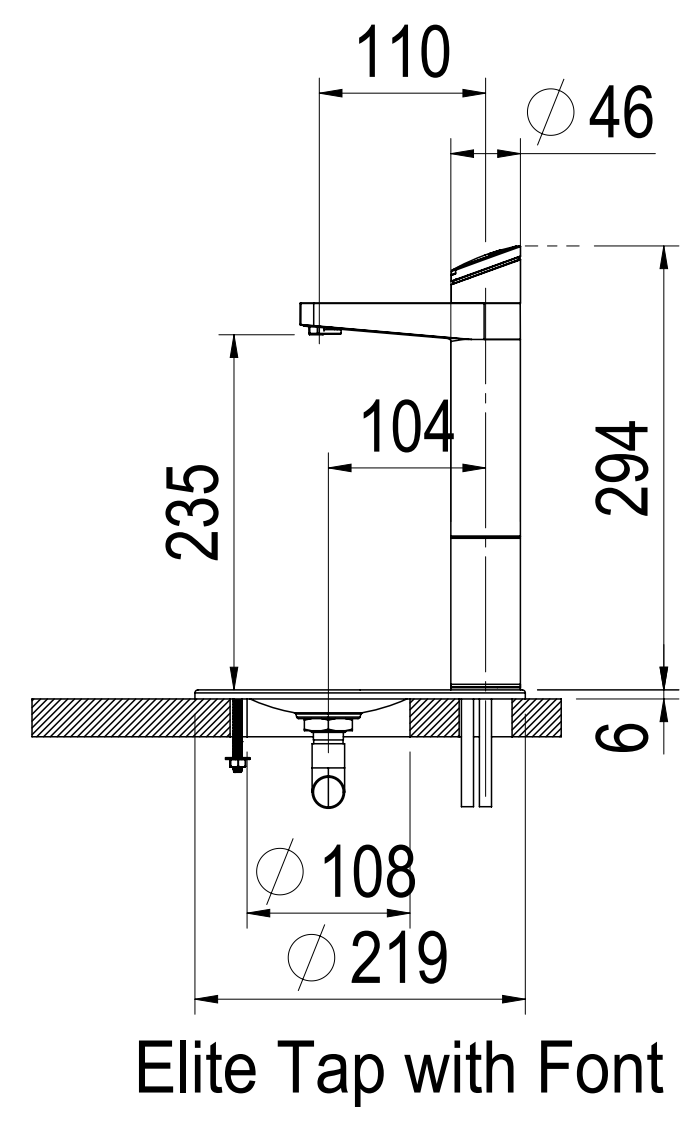
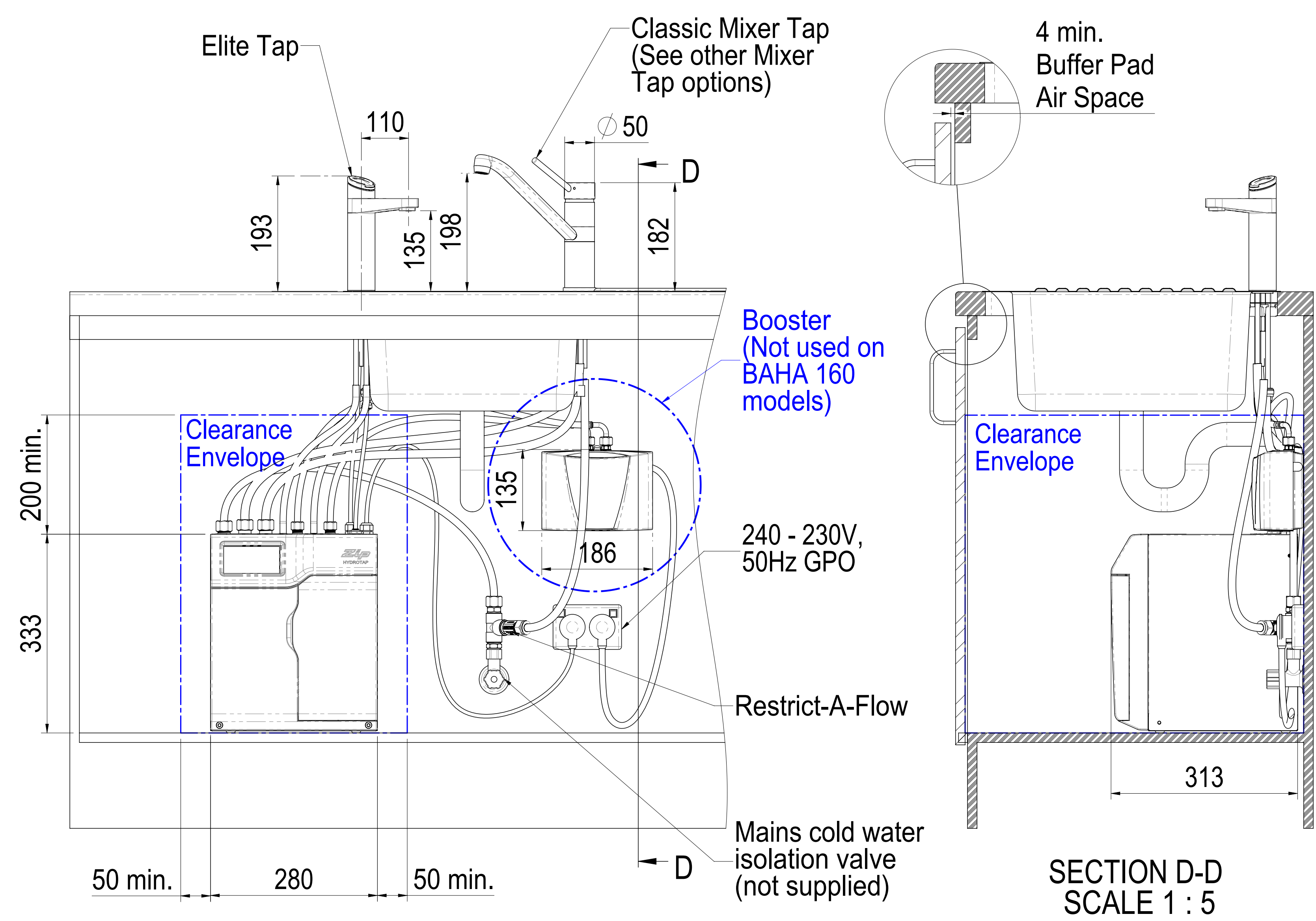
THIRD ANGLE
PROJECTION

Dimensions in
millimetres
Drawing to
BS8888:2004
Screw threads to
BS 5697:2000

Zip Industries Pty Ltd
67 Allingham Street
Covadonga Park
Sydney NSW 2200
Australia
Web: www.zipindustries.com
Email: sales@zipindustries.com

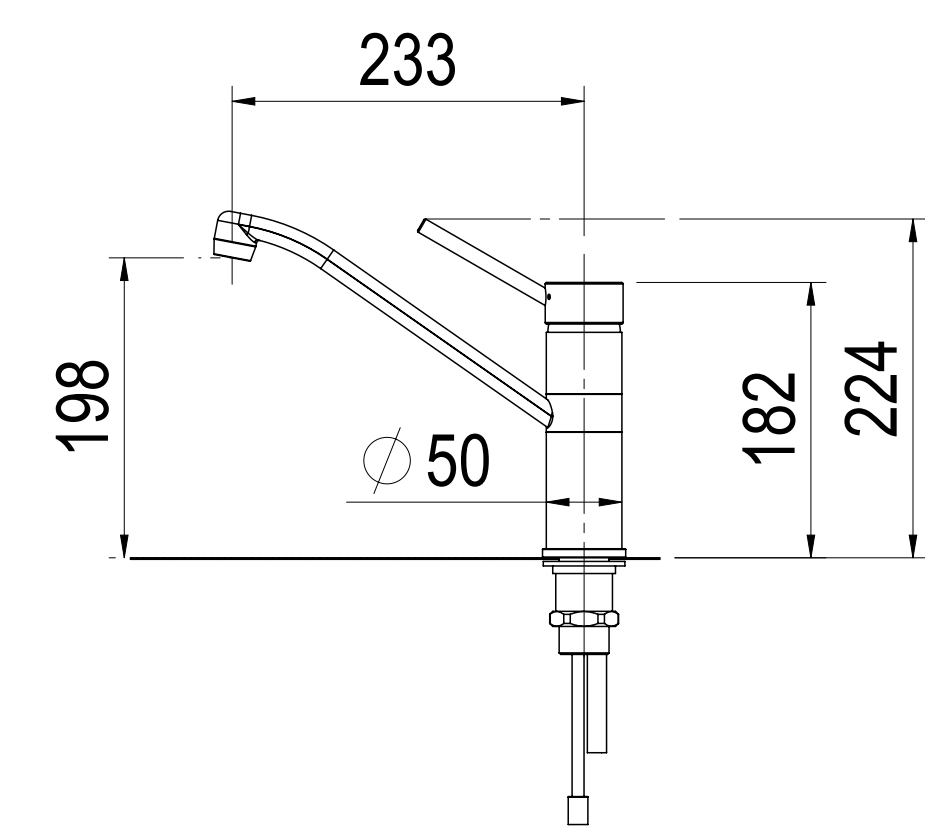
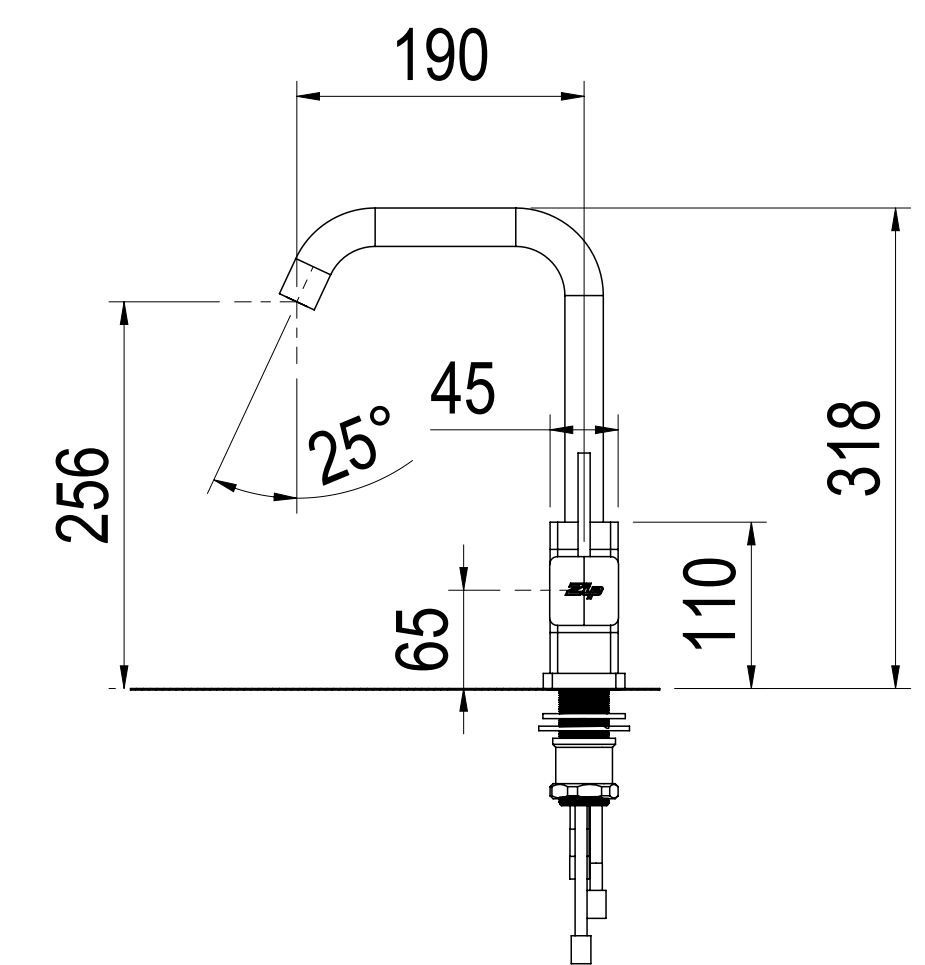
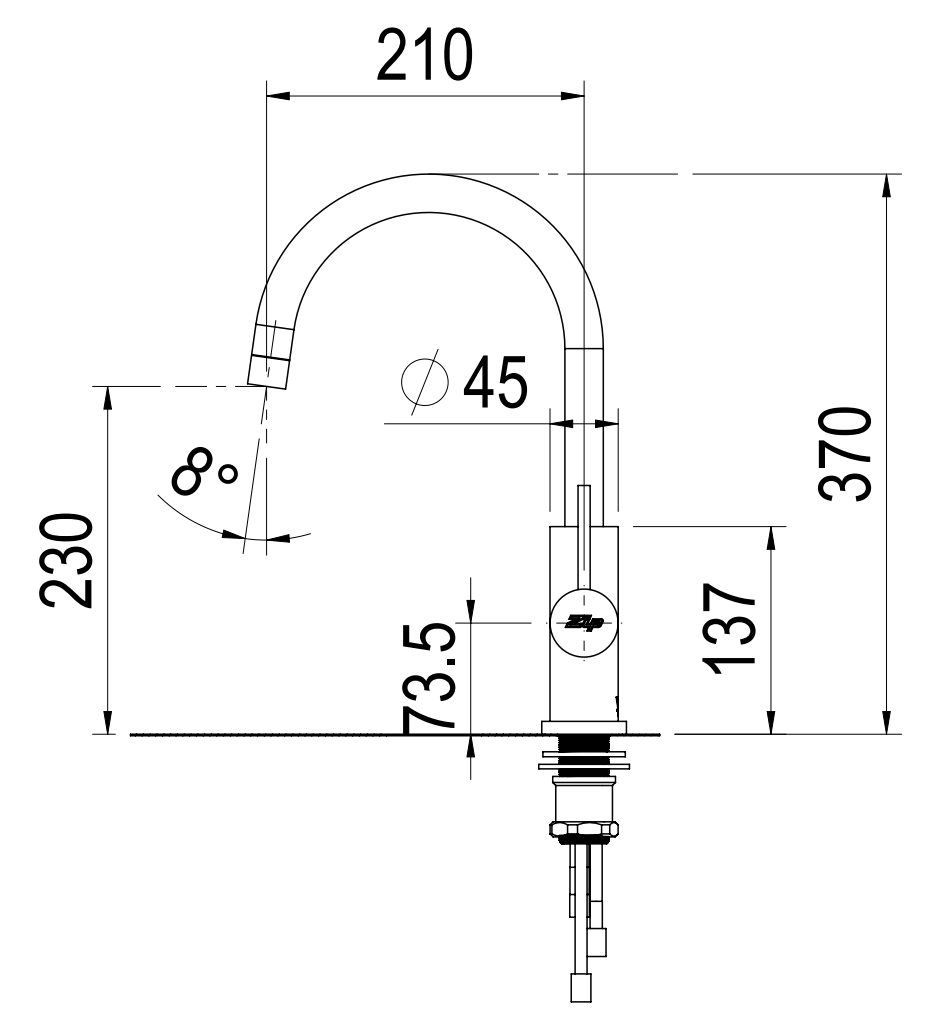
Position the Tap such that it dispenses into the sink bowl with ample clearance for a cup or a tea pot. Alternatively, the Tap could be mounted away from the sink using a Zip Font available as an accessory.

Sink shown only
Ø 35 Hole for Elite Taps



MIXER TAP OPTIONS

Provide ø35mm hole on sink



This set-up is applicable to:

4in1 BAHA160 (Excluding Booster)

HT4731: 5201AU0E2CN1C w/ Elite Tap + Classic Mixer Tap

HT4231: 5201AU0E2AN1C w/ Elite Tap + Arc Mixer Tap

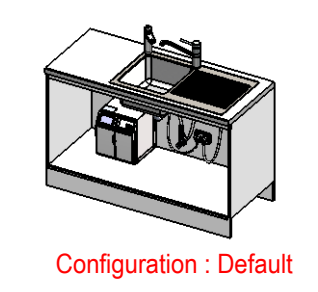
HT4331: 5201AU0E2UN1C w/ Elite Tap + Cube Mixer Tap

4in1 BAHA240 (With Booster)

HT4732: 5301AU0E2CN1C w/ Elite Tap + Classic Mixer Tap

HT4232: 5301AU0E2AN1C w/ Elite Tap + Arc Mixer Tap

HT4332: 5301AU0E2UN1C w/ Elite Tap + Cube Mixer Tap



This drawing is CONFIDENTIAL and is supplied on the express condition that it will not be LOANED, COPIED or DISCLOSED to any other third party or used for any purpose without the written consent of Zip Industries Pty Ltd. This document is printed in hardcopy form. It is for INFORMATION ONLY and therefore not subject to updating controls. For the current revision ALWAYS refer to the MATING electronic form as stated in the top left hand corner of this sheet. © copyright Zip Industries Pty Ltd. 29542015

Zip Industries **Zip**

Make or Buy: Buy		Approved by: edgar on 23/07/2015		Description: Assy - Kitchen Layout (HydroTap G4 BAHA240 UN1 & Elite Tap + 4in1 Mixer Tap with Booster)	
Manufacturing Route: Manufacturing Process		Checked by: edgar on 23/07/2015		Configuration: Default	
Raw material: See Components		Updated by: edgar on 14/02/2015 12:57:28 PM		Project: Hydrotap G4B	
Remove all sharp edges. This drawing ONLY details information which cannot be ascertained from the 3D geometry of the part(s) attached. Model & dimensions are AFTER all finishing operations.		Material: See Components		Model: KL002_5301AU0E2CN1C	
Comments:		Finish:		Created by & on: EdgarG on 4/05/2011	
Volume (mm3): 77118.6		Area (mm2): 126258.7		Drawing: KL002_5301AU0E2CN1C	
Mass (g): 88876.2		Density (g/mm3): 1.2		Status: Prototype	
Position: NO		Recyclable: NO		Size: A1	
Handed: NO		Scale: 1:1		Sheet: 1 of 1	
				Rev: 01	
				Config: Property	
				Custom: Property	