

G4 Industrial Tap

Filtered boiling and chilled drinking water for industrial kitchens and tea rooms.



**Affix Model Number Label
Here
802742**



Index

HydroTap Specifications

Installation check list	3
General Product Features.....	4
Important Safety Instructions	4-5
Warnings and Regulatory Information.....	5
Major components and Accessories	6
Before Installation and site requirements.....	7
Technical Specification	7

Installation Instructions

STEP 1 - Measure and cut all the tap holes before fitting the taps

Section 1 - Tap Installation instructions

1.1 - HydroTap IS and IT Tap Installation	8-9
---	-----

STEP 2 - Check for adequate ventilation

Section 2- Ventilation

2.1- Vent cut out details.....	10-11
--------------------------------	-------

STEP 3 - Install the Booster Heater (if required)

Section 3 - Booster heater Installation

3.1- Booster Heater specifications and Installation	12
---	----

TEMPLATE	13-16
----------------	-------

3.2- Booster Installation	17-18
---------------------------------	-------

STEP 4 - Mount the external filter / softener (if required)

Section 4- Filter / Softener installation

4.1- Mounting the filter head & cartridge Installation.....	19
---	----

STEP 5 - Install the undersink unit

Section 5 - Undersink unit installation

5.1- Check the external bypass valve setting	20
5.2- Fit the mains water supply hose	20
5.3- Connect the USB Junction box.....	21
5.4- Connect the water supply	21
5.5- Model BC 160/125 and BC 160/175	22
5.6- Model BC 240/175	23

STEP 6 - Commission the HydroTap

Section 6 - Commissioning

6.1- Language Selection	24
6.2- Filter Flush	24
6.3- Flow Calibration	25
6.4- Boiling Calibration	25
6.5- Booster Activation	25
6.6- Legacy Mode (IS and IT Taps)	26

Trouble Shooting

Trouble Shooting Table.....	27
Contact details	28

Installation checklist

Before Installation:

- A. Read the instructions and check if there is adequate space to mount all of the components.
- B. Note: Not all fittings are supplied with the appliance kit. Isolation valves are not supplied.
- C. Check the mains water pressure is between 172kPa (200kPa when a booster and /or filter softener is fitted) and a maximum working pressure of 700kPa.
- D. Check the water quality to determine if extra filtration will be required.
NOTE: This product must be fitted to a potable water supply
- E. Check the appliance rating plate and ensure correct power is available for the appliance.
- F. Check the under counter cupboard supporting the appliance is adequate for the total weight of the appliance, when full of water.

Before Commissioning:

- 1. Check the unit has been installed correctly.
- 2. Check all plumbing fittings have been tightened.
- 3. Ensure the outlet and vent pipes are positioned to drain correctly.
- 4. Ensure there is adequate ventilation.
- 5. Check all tubes from the undersink unit to the tap, have a constant rise and there are no sags or kinks in the hoses.
- 6. Check all electrical connections are correct and there are no loose wires.

Commission: (See section 6)

- 7. Flush the supply line before connecting.
- 8. Turn on the water and check for leaks.
- 9. Flush the filter(s).
- 10. Where applicable, programme the unit to suit the customer's requirements.

General Product Features

Thank you for purchasing a Zip Industrial HydroTap. Please read and follow these instructions carefully to ensure safe and trouble free service. If service is required, please call 1 800 63 86 33

What is the Zip HydroTap ?

The Zip HydroTaps are electronically controlled, filtered, Boiling water and Chilled water drinking systems for kitchens and tea rooms. The HydroTap units are under bench drinking water appliances with a dispensing tap mounted on a sink or bench. These taps are designed for industrial applications and are NOT to be used as sanitary fixtures.

The underbench units utilise a conventional refrigerant compressor to chill the water and an immersion heating element to boil the water. The HydroTap dispenses boiling water (factory set to 98°C) and chilled water (factory set to 5-9°C).

The Boiling water taps (except the 2 button side touch tap) are fitted with a safety lock. In addition, there are various energy saving options accessible via the main menu. Each unit is equipped with a self-calibrating program which caters for altitude adjustment. The water filter is a disposable item which will require periodic replacement and is covered by a limited OEM warranty.

It is important that the Installation be done safely, correctly and completely, in order to utilise all the benefits the HydroTap can provide.

Legacy Mode:

The Industrial series of taps (IS and IT) require the G4 underbench unit to be set in Legacy mode prior to initial operation.(See section 6 for details)

Legacy mode is enabled / disabled in the service section of the main menu. Please note this is password protected. Please contact your local service centre for details.

Important Safety Instructions

This manual contains important safety, Installation instructions for the Zip HydroTap G4.

Safety

This appliance is not intended for use by persons (including children) with reduced physical, sensory or mental capabilities, or lack of experience and knowledge, unless they have been given supervision or instruction concerning use of the appliance by a person responsible for their safety. Children should be supervised to ensure that they do not play with the appliance.

For products sold in Europe, this appliance can be used by children aged from 8 years and above and persons with reduced physical, sensory or mental capabilities or lack of experience and knowledge if they have been given supervision or instruction concerning use of the appliance in a safe way and understand the hazards involved. Children shall not play with the appliance. Cleaning and user maintenance shall not be made by children without supervision.

Refrigerant

The Zip HydroTap unit contains R134A refrigerant under pressure. Maintenance of the refrigeration unit must be carried out by an accredited service provider or qualified refrigeration technician.

Qualifications

If the power cable is damaged it must be repaired only by a qualified technician. To avoid hazards, all Installation procedures must be carried out by a suitably qualified tradesperson. The power cable and power outlet must be in a safe visible position for connection.

Important Safety Instructions

Venting

Sometimes steam and / or condensed droplets may discharge through a vent outlet at the tap. If the tap is not installed using the Font pedestal, ensure the tap body is located so the tap outlet safely dispenses into the sink bowl area.

Lifting

Take care when lifting the Zip HydroTap unit. Some units may exceed safe lifting limits. If you feel this is beyond your personal capabilities, please seek assistance with the lift. The weights of the units are marked on the packaging. Do not lift the unit by the front cover or any connections at the top rear of the unit. Refer to section 1.2 technical specification for the weight of your product.



Airflow

The ambient operating temperatures, when installed in a cupboard, must be between 5°C - 35°C. Proper air circulation must be provided. The system will operate satisfactorily only if the recommended air gaps of 50mm on each side are provided. If a vent kit is supplied it must be fitted. See technical specifications for correct Installation to prevent overheating.

Altitude

Water boils at varying temperatures at different altitudes. Your HydroTap adjusts for this during startup calibration and will recalibrate itself on a regular basis.

Frost Protection

If this appliance is located where the ambient air temperature could fall below 5°C when the heater is not in use, do not turn off the appliance electrically. This safeguard does not offer the same protection to the connecting pipework and fittings.

Positioning

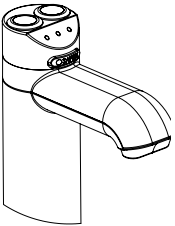
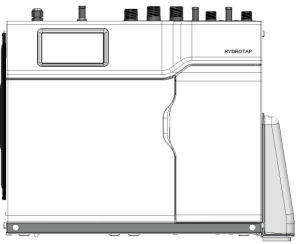
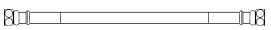
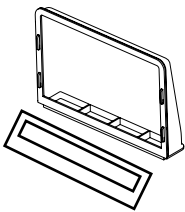
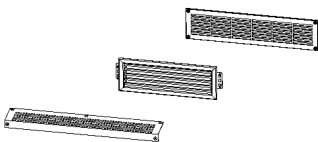
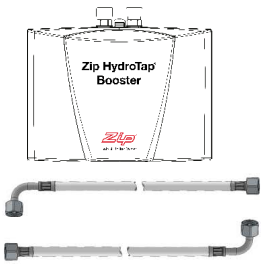
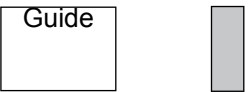
It is important to ensure the undersink unit is positioned in an accessible area close to the floor level. The unit must have it's base mounted in a horizontal position with all inlets and outlets facing up. The Tap must be located above the undersink unit. See section 5 for details.

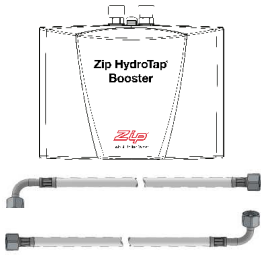


WARNINGS

1. The Zip HydroTap unit must be earthed. The resistance of the earth connection from each exposed metal part must be less than 1 ohm.
2. All Installation and service work must be completed by trained and suitably qualified Tradespeople. Faulty operation due to unqualified persons working on this product, or any other Zip product may void warranty coverage.
3. All Plumbing must comply with AS/NZS3500.
4. All Electrical must comply with AS/NZS3000
5. All Plumbing and Electrical connections must be made in accordance with local regulations.
6. This HydroTap product is rated for 230V 50Hz AC operation.
7. Undersink units must never be located near, or cleaned with water jets.
8. Zip HydroTaps are not to be exposed to the elements of nature
9. Due to the process of continuous improvement, Zip Heaters reserves the right to change details mentioned in this manual, without notice.



Major components and accessories

Parts supplied	Description
	1 off IS or IT Tap with hoses
	1 off HydroTap Undersink Unit with air and water filters
	1 off Mains water connection hose
	Duct kit 1 x Air Duct 1 x Mounting plate
	Vent Kit 1 x Kickboard louvre 1 x Door vent louvre 1 x Front vent grill
	1 off HydroTap Booster Heater & hoses. (Supplied with 240 /175 models)
	1 x User guide and 1 x Quick start guide

Accessories	Description
	HydroTap Booster Water System with connection hoses
	Softener and head assembly
	Replacement Filter

Before Installation



Before installing ensure that the following have been provided at the Installation site:

- Review all the technical specifications.
- Ensure the underbench can support the product weight when full of water, (allow an extra 5kg when full.)
- Sufficient space in the cupboard to install all of the undersink units in accordance with these Installation Instructions. Refer to technical specification for dimensions. Make allowance for a booster heater and / or water softener if required. Refer to section 3 & 4, for Installation instructions.
- For Zip HydroTap 160/125 & 160/175 models, a 220-240Vac, 10A GPO will be required. For Zip HydroTap 240/175 models, two 220-240Vac, 10A GPOs will be required. (One GPO is for the Zip HydroTap and the other for the Booster heater).



Note: Check all cable and hose lengths against inlet /outlet positions before proceeding (See section 5 for general layout).

- A potable water supply connection with isolating valve inside the cupboard within reach of the braided hoses and positioned so that the connection point and the stop cock will not be obstructed when the undersink units are installed.
- For the mains pressure All-IN-ONE, an external hot and cold water supply will be required.
- If an external filtration or water softening device is required, then it is important to allow extra space for these items.
- A cold water supply with a minimum working pressure of 172kPa (200kPa when a booster and /or filter softener is fitted) and a maximum working pressure of 700kPa connected via an isolation valve.
- The fitting of an air flow duct, attached to the right hand side of the unit, requires a rectangular cut size of 284mm x 45mm, to provide adequate warm air displacement. See section 2.
- The appliance must be placed with it's base in a horizontal position.

IMPORTANT! Do not proceed with the Installation if these requirements are not met.

Product covered by these instructions:

Commercial Models	
BC	Boiling and Chilled

Model	Cups of Boiling Water per Hour	Glasses of Chilled Water per Hour
BC	160	125

Chilled water will continue to be dispensed after the rated capacity has been used, although this may be at a slightly higher temperature.

	Capacity Boiling (cups)	Capacity Chilled (glasses)	Boost (10A)	GPO's Required	Power Rating (kW)	Boost Rating (kW)	Unit Dimensions W x D x H (mm) with air duct	**Dry Weight (KG)
Boiling Chilled								
BC160/125	160	125	no	1x10A	2.1		450 x 470 x 335	23
BC160/175	160	175	no	1x10A	2.2		450 x 470 x 335	23
BC240/175	240	175	yes	2x10A	2.2	2.2	450 x 470 x 335	23

** Add an extra 5 kg when full of water

Section 1

Tap Installation

Special Tools Required:

In addition to normal tools, the following will be required:

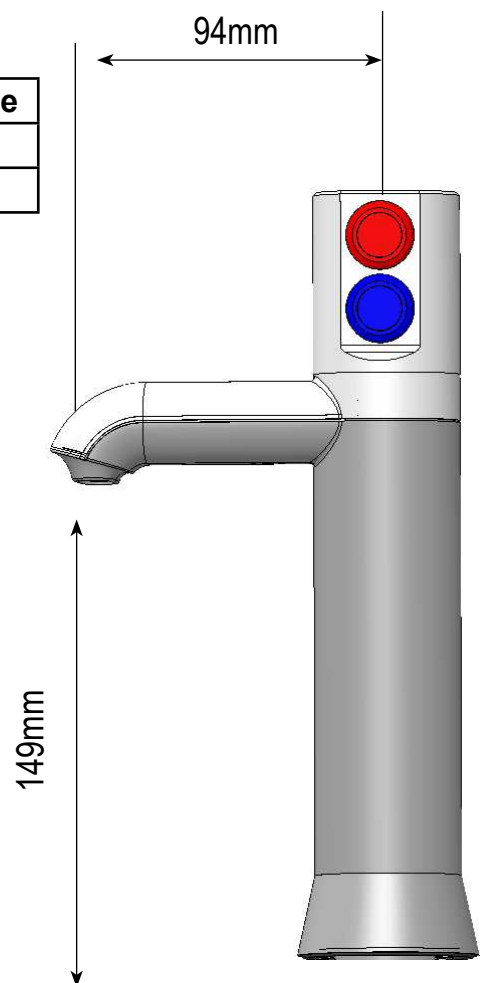
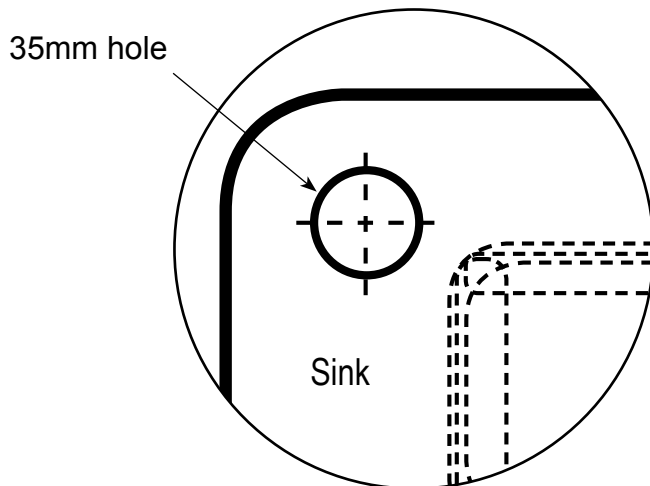
For the standard and Mixer taps:

- 35mm diameter sheet metal hole punch for sink tops. (Not supplied)
- 35mm diameter hole saw for timber bench tops. (Not supplied)
- Nut runner tube spanner (supplied) for fixing tap assembly.

1.1 Hole positioning

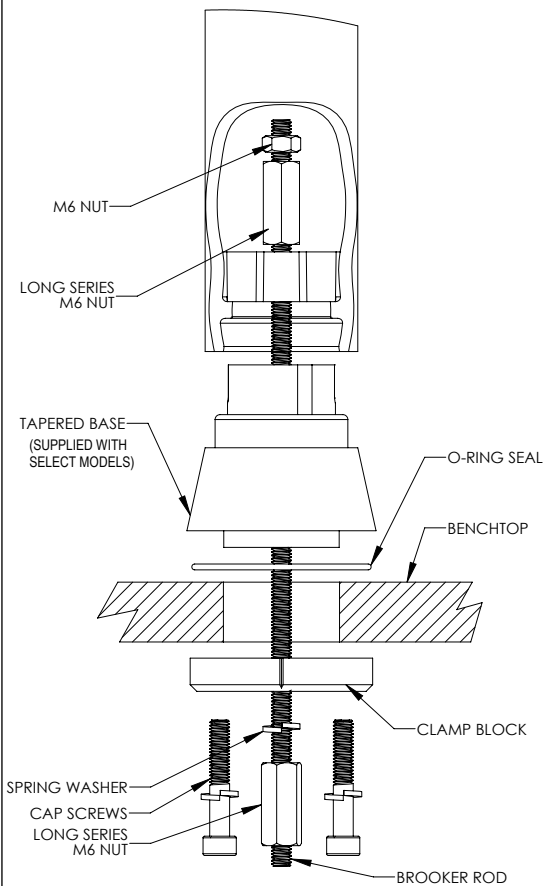
TAP	Recommended dispensing distance
Top Touch Tap	74 mm
Side Touch Tap	94mm

Position the tap such that it dispenses into the sink bowl with ample clearance for a cup or tea pot. Alternatively, the tap could be mounted away from the sink using a Zip Font, available as an accessory (Pt No. 90869).

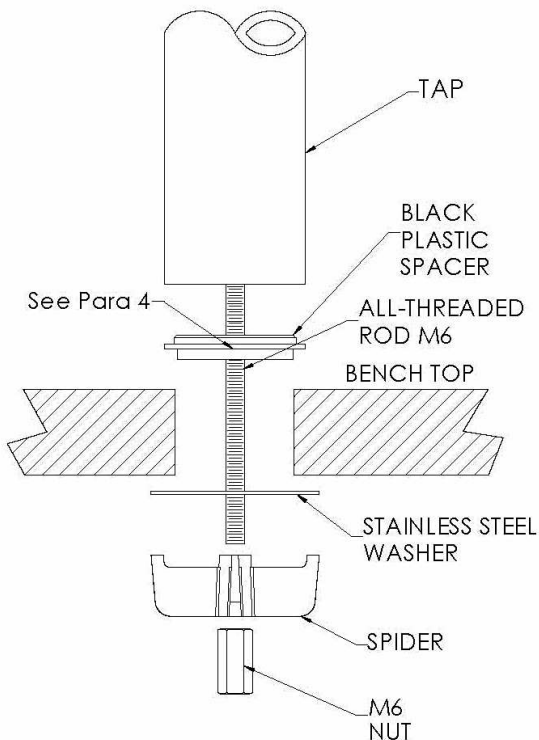


Installation procedure

IS Tap installation



IT Tap installation



1. Make sure the tap location will allow the nozzle to drain into the sink. NOTE : The IT tap spout is 20mm shorter than the IS spout
2. For IS taps, use the template supplied to correctly locate the 35mm hole in the bench top. After cutting the 35mm hole, carefully align the template and drill the 3 x 6.5mm clearance holes, in the correct orientation for either Left or Right hand operation. Refer to table of recommended maximum and minimum thickness of benchtop based on the length of the cap screws being used.
3. A light smear of silicon sealant on the O-ring seal (IS Tap), or on the black plastic spacer (IT Tap) will ensure a watertight fit.
4. For IS taps, Place the tap and tapered base assembly (Supplied with select models) into the 35mm hole so that all the seals are in place and ensure the copper tubes and cable are not fouled.
5. For IS taps, working from the underside of the bench, install the clamp block (noting the position of the orientation marker) . Feed the three tubes and electrical cable through each of their respective holes. Slide the clamp block up and secure with the M6 Long series nut on the centrally located brooker rod.
6. For the IT tap, install the Stainless steel washer and spider as shown in the diagram below and secure with the M6 nut.
7. For IS taps, Fit the 3 x M6 cap screws and spring washers, through the clamp block and bolt them into the tapered base. Check the Tap Head position before securing it tightly against the bench top.

NOTE 1: The tap assembly must not be positioned more than 900mm above the base of the HydroTap unit

Failure to do this may result in poor water delivery.

NOTE 2: Under no circumstances should the IT Tap be twisted after the installation is complete.

NOTE 3: The M6 x 35 cap screws supplied with the I/S tap are suitable for installation on worktops with a thickness between 14 and 18mm. For worktops outside this range with a thickness 'T', M6 cap screws with a length between T+17 and T+22mm should be used, as per the table below.

Table of recommended max. and min. thickness of benchtop

Cap Screw	Max. Thickness	Min. Thickness	Remark
M6 x 35	18 mm	14 mm	Supplied with tap
M6 x 30	13 mm	8 mm	Not supplied
M6 x 40	24 mm	19 mm	Not supplied

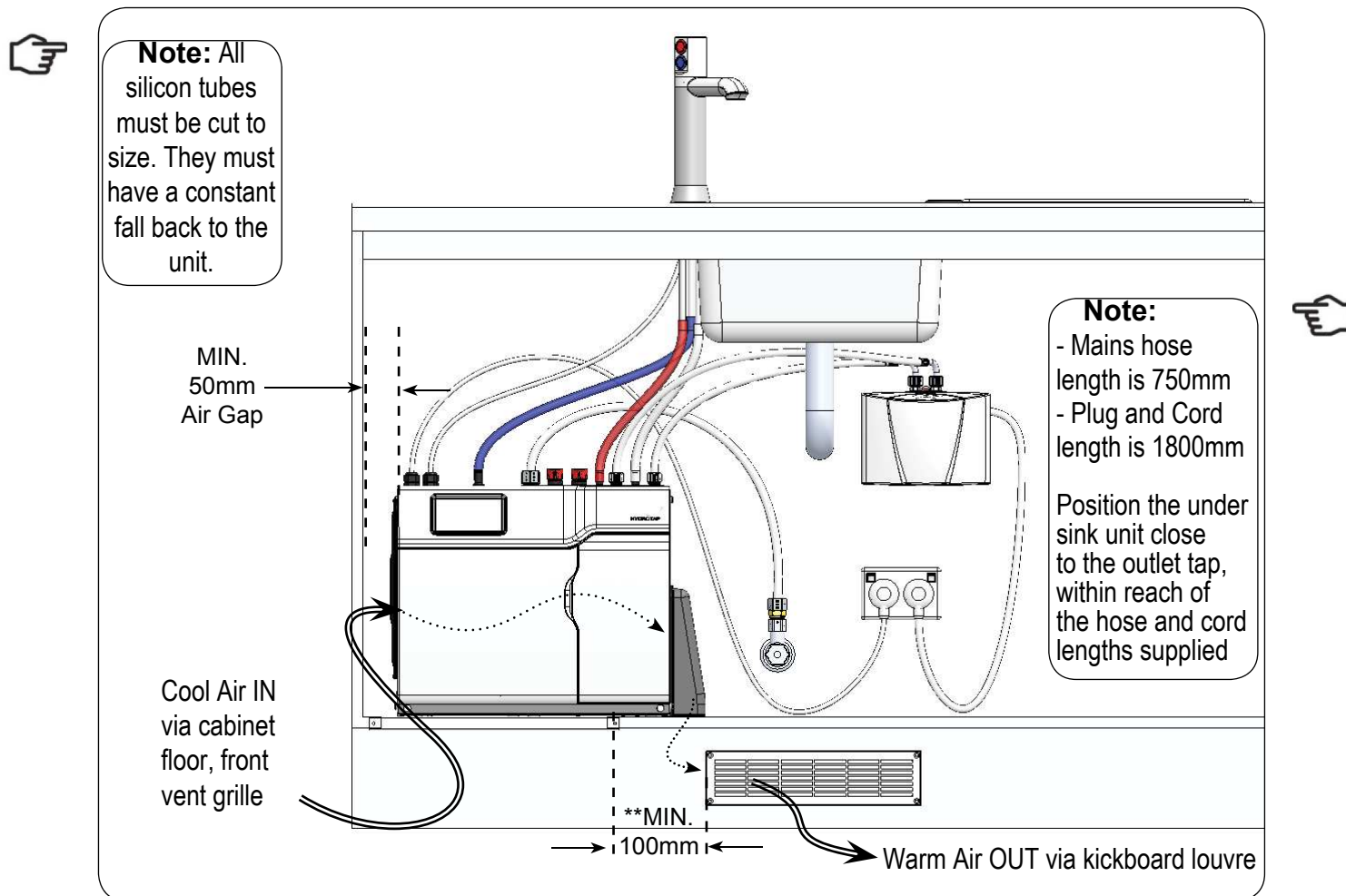
Section 2

Ventilation

When installing air flow ducts, the following tools will be required:

- Jigsaw and a 12mm Drill
- Keyhole or Wall Board saw.

Recommended Installation showing the correct air flow



2.1 All Models

Proper air circulation must be provided for all Boiling and Chilled models. The system will operate correctly only if the recommended air gaps are achieved during Installation. The vent duct and louvre panels must be installed for all under floor and /or door vent systems, as instructed.

****Note:** Inlet and outlet vents should be separated by a Min 100mm, to avoid hot air recirculation.



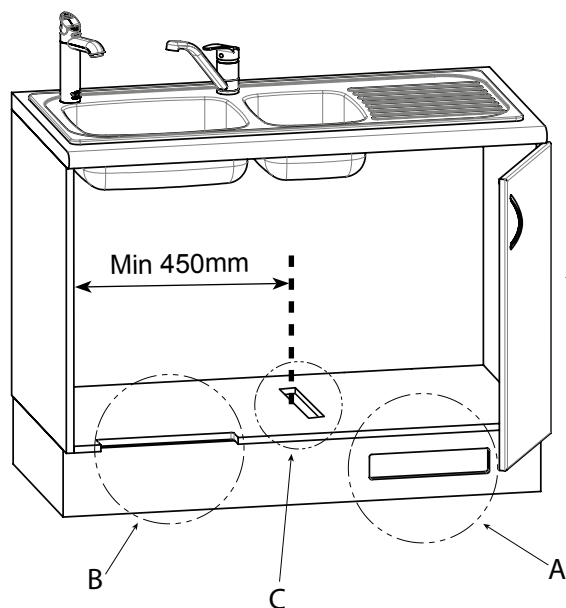
IMPORTANT: See section 5.3 for clearances.

Ventilation

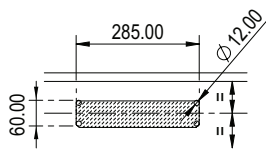
CUT OUT DETAILS

ATTENTION:

Insure that: Cut outs 'A' and 'B' are on opposite side of cabinet.
Cut out 'C' is straight behind 'A'

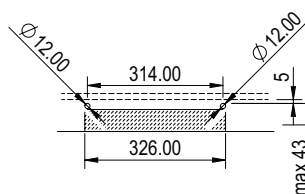


For positioning of cutout C
use the template marked on the cardboard carton



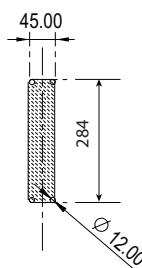
A - KICKBOARD CUT-OUT

1. Drill 4 pilot holes Ø12 in corners
2. Finish cut-out using Jigsaw and Keyhole or Wall Board saw



B - CABINET FLOOR CUT-OUT

1. Drill two pilot holes Ø12
2. Finish cut-out using Jigsaw



C - CABINET FLOOR CUT-OUT

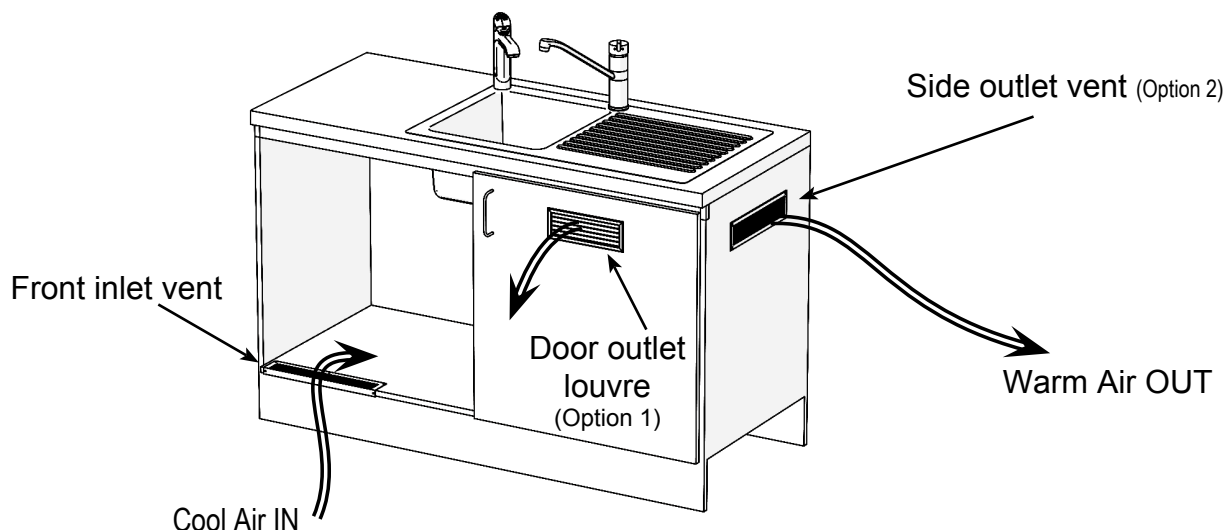
1. Drill 4 pilot holes Ø12 in corners
2. Finish cut-out using Jigsaw and Keyhole or Wall Board saw

The following instructions are critical if the vent kit, as supplied, is not fitted:

If the kick board vent kit cannot be used then it is important to fit a standard HydroTap vent kit, which ensures heat dissipation through natural convection via installed vents. For normal applications, where the cupboard space temperature is near 35°C, or higher, an auxiliary ventilation kit must be fitted. (Contact your local service centre for availability).



Note: The vent kit has to be installed in a way that allows air to be drawn in from the bottom of the cupboard and expelled through the top of the cupboard. Therefore placement of the outlet vent should be towards the top of the door (Option 1) or on the upper side of the cupboard (Option 2).

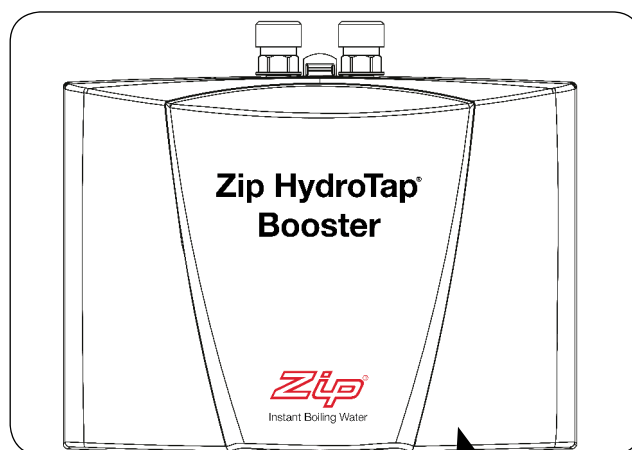


Section 3

Booster Heater

3.1 Product Description

The boost unit is a compact electronically controlled auxiliary water heater. It is intended to provide pre heating of water before it enters the Zip HydroTap G4 boiling tank. The Booster is supplied as standard equipment with all 240 cup models. However, it may be later installed, as an accessory for the 160 cup models, to increase their delivery to 240 cups.



Note 1: water connection

:Blue marking - water in

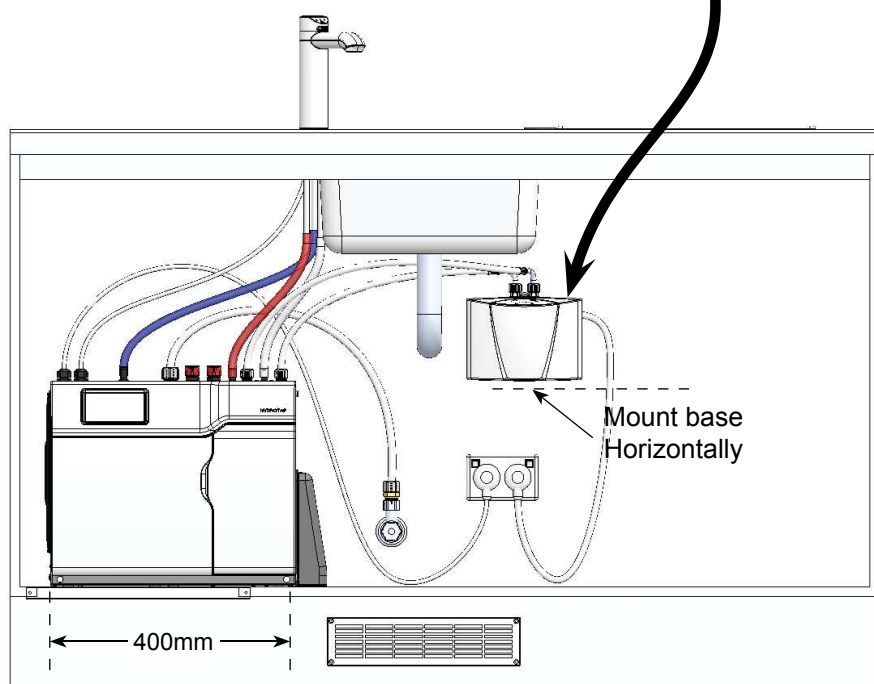
:Red marking - water out.

The braided hoses cannot be lengthened.

Note 2: The electrical cable length is 1.0 metre.

Note 3: Position the Booster within reach of the fixed hose lengths, keeping the Booster as close as possible to the undersink unit inlet/ outlet fittings.

Note 4: Ensure the Booster heater is mounted in an upright position (as shown) with a horizontal base



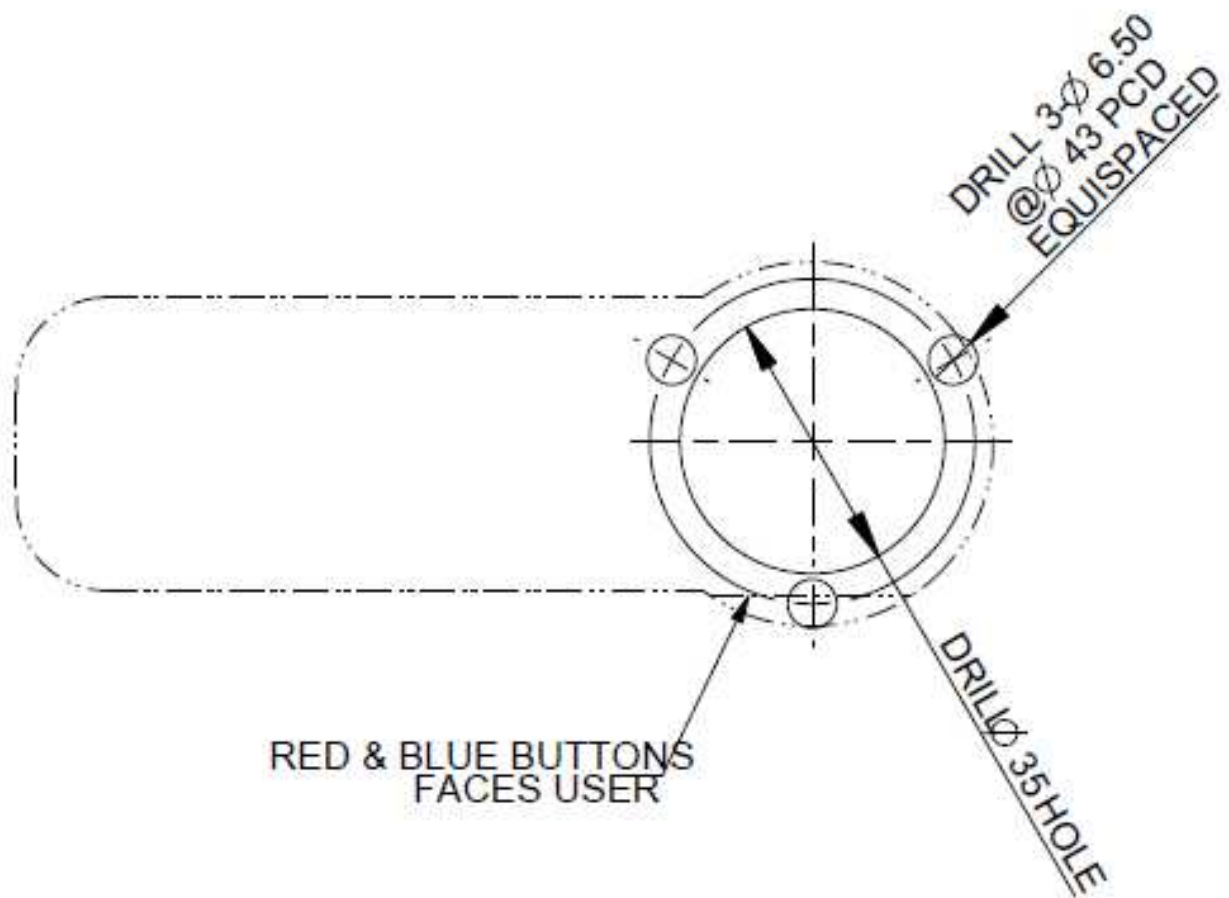
Booster Specifications:

	Rating	Unit
Nominal Power Rating	2.2	kW
Nominal Current	10	A
Electric Supply 50Hz AC	230	V
Elect flex and plug (black) - 1 meter length (with 90° Australian plug)	10	A
Fixed Flow Rate	1.2	L/min
Minimum water pressure	200	kPa

THIS TEMPLATE IS NOT REQUIRED FOR IT TAPS

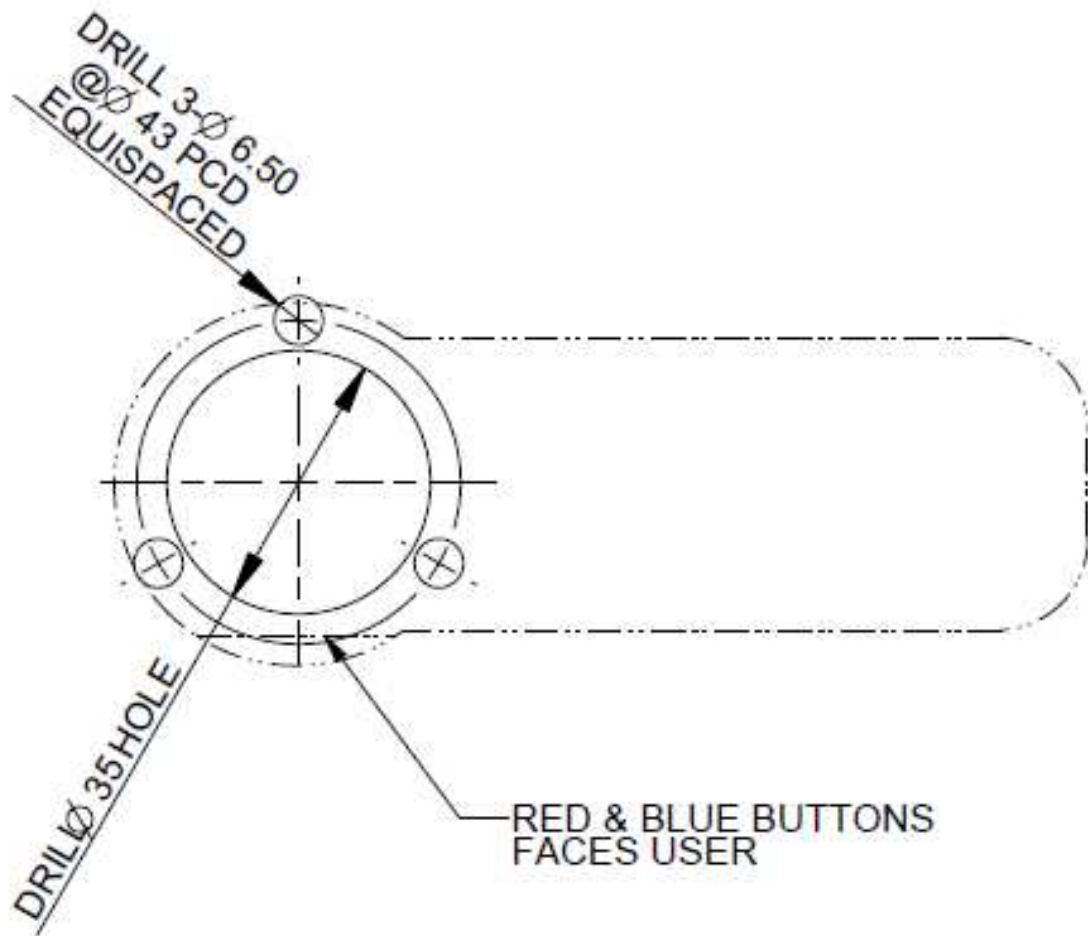
Template for IS Tap

USE THIS DRILLING TEMPLATE
WHEN MOUNTING TO THE RIGHT HAND SIDE
OF THE FONT OR SINK



PLAN VIEW
SCALE 1:1

USE THIS DRILLING TEMPLATE
WHEN MOUNTING TO THE LEFT HAND SIDE
OF FONT OR SINK



PLAN VIEW
SCALE 1:1

Pullout Template


3.2 Installation Procedure

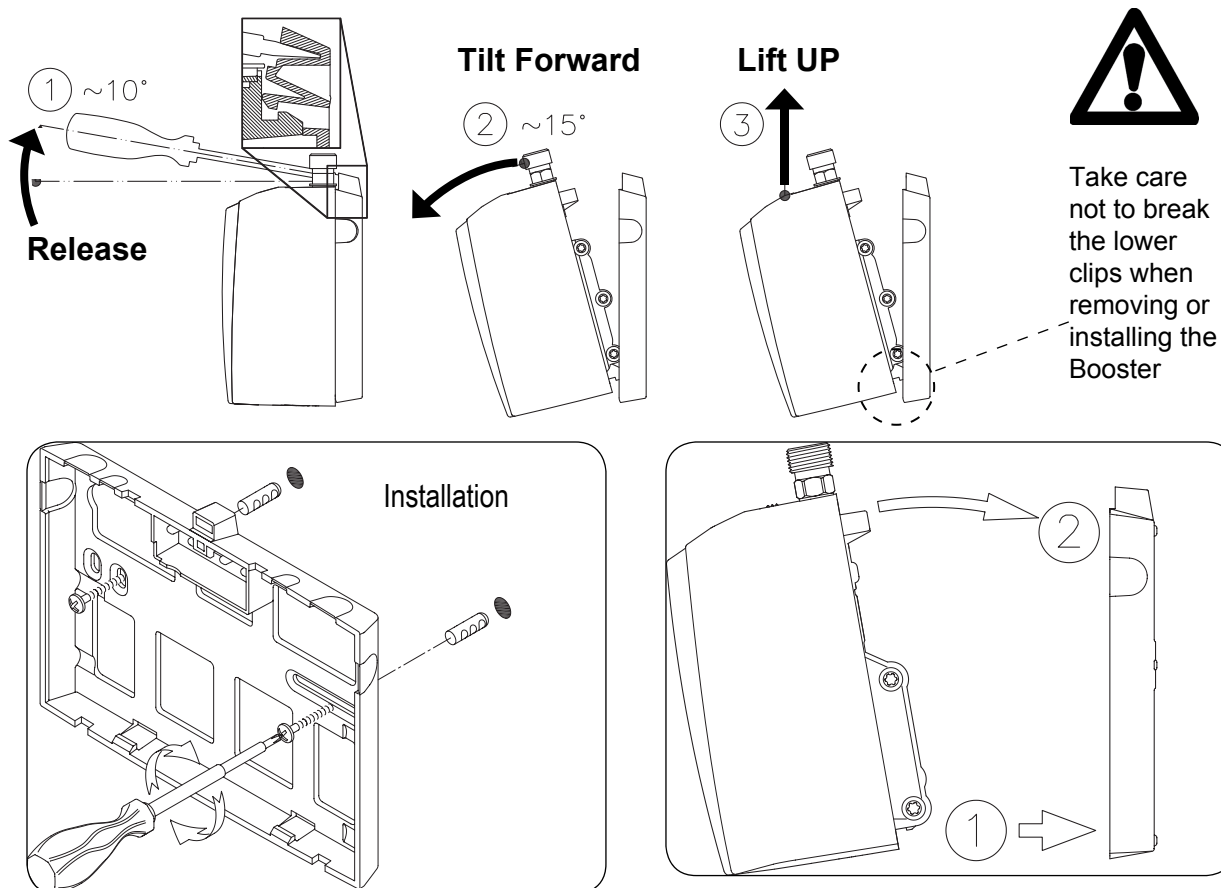
Site requirements

- Appliance must only be installed in a frost-free area. Never expose appliance to frost.
- The Appliance is designed for wall mounted Installation and must to be installed with water connectors facing upwards.
- The appliance complies with protection class IP 25.
- The 400mm braided hoses supplied with the unit cannot be lengthened.
- The 90° elbow hose ends, should be fitted to the inlet and outlet connections on top of the Booster.
- The hot water outlet hose must be thermally insulated with the insulation provided.

3.3 To Remove / Install the appliance

1. Insert a flat head screwdriver all the way into the lock.
2. Gently angle the screwdriver upwards by approximately 10° as shown in the image below.
3. Pull the appliance forwards by approximately 15° as shown.
4. Carefully pull the appliance upwards to complete the removal process. Taking care not to break the lower clips
5. To install; Place the appliance on the wall bracket and snap into position (See installation below).

 **Note:** Remove the backing plate for wall mounting



Booster System

 **Note 1:** This appliance is intended for use with the Zip HydroTap under sink unit.

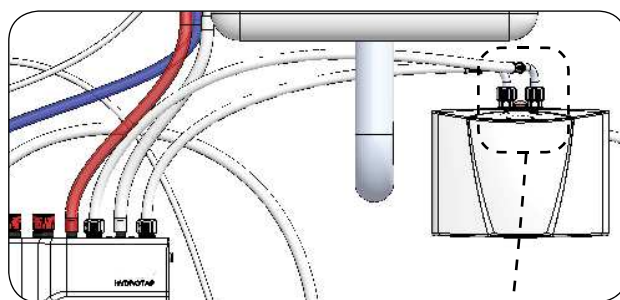
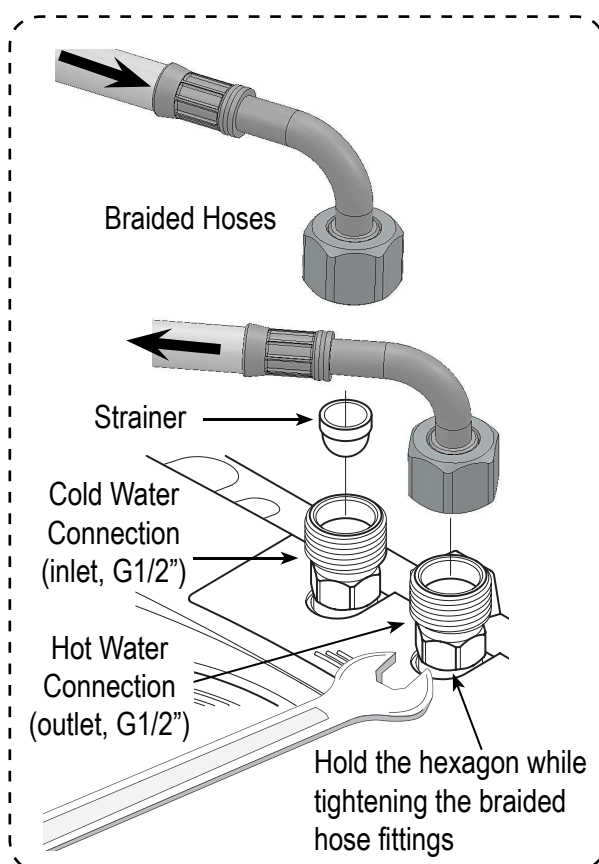
Note 2: Water connections must be pointing vertically upwards.

Note 3: The booster unit should be installed as close as possible to the Zip HydroTap Unit as the 400mm connection hoses cannot be lengthened.

3.4 Braided hose connections

1. The cold water inlet (blue) and hot water outlet (red) are marked on the rating plate. Connect the braided hoses from the 'Bypass Out' fitting to the water inlet of the booster unit (Marked Blue) and from the outlet of the booster unit (Marked Red) to the 'Bypass IN' fitting on the Zip HydroTap unit. Avoid exerting any mechanical pressure on the appliance. This can be achieved by applying a spanner on the flats of the inlet and outlet connections when tightening the braided hose connectors. Do not overtighten ! Tighten the braided hoses by hand, then turn an additional 90° - 180° with a spanner
2. Once the water connections have been made, check for any leaks and rectify as necessary.

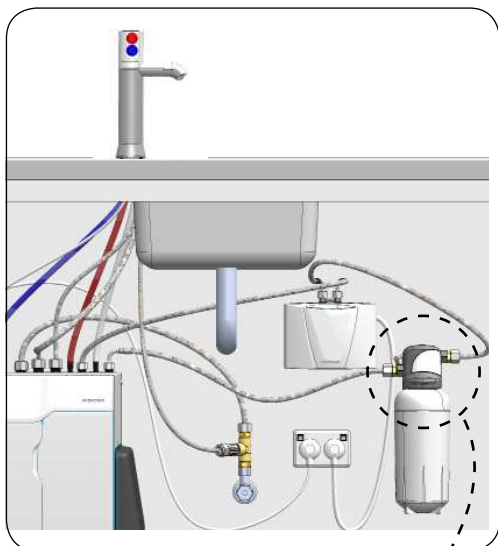
Typical Installation



Section 4

Filter / Softener Installation

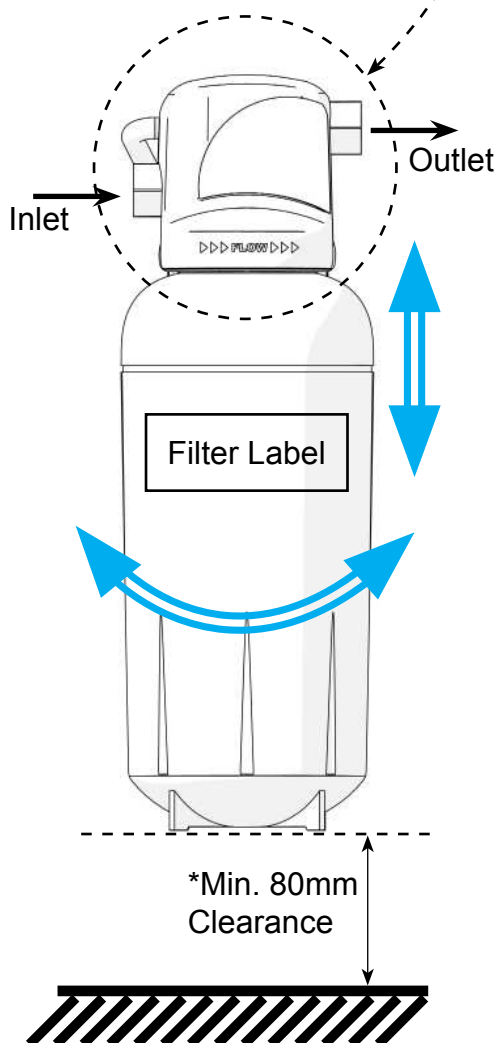
An external filter / Softener may be fitted to reduce the incidence of scale build up in the hot tank or may be at the customer's request.



4.1 Mounting the filter head

- Choose a suitable location, (cupboard back or side wall) within the reach of the braided hoses.
- Mount the filter head bracket in an upright position, using the screws supplied in the kit
- Ensure there is enough headroom for the filter cartridge to be easily fitted and removed. *Allow a Min 80mm base clearance
- Attach the hoses as shown in section 5.3 - 5.4. Noting the flow directions as marked on the filter head.


4.2 Cartridge Installation



1. Unpack replacement cartridge, write today's date where shown on the label and remove the sanitary cap.
2. Avoid touching the filter O-rings and filter opening as this may cause bacterial contamination of the cartridge.
3. Moisten the O-rings with water, align the front cartridge label to the left and push the new cartridge into the filter head.
4. Turn the cartridge a quarter turn to the right until the cartridge comes to a complete stop, with the front label facing forward.
5. Disconnect the filter outlet hose from the undersink unit and direct the hose end into a container ready for flushing.
6. Turn the power and water ON and depress the tap's Boiling lever and allow water to run for 30 seconds to flush the tank.
7. Allow at least 10L to flow through the filter to ensure all carbon particles have been flushed.
8. Turn the power and water off (after flushing 10L).
9. Reconnect the filter outlet hose to the undersink unit.
10. Turn the water supply back on and check for leaks.
11. Set the appropriate selection on the Internal Filter Bypass valve located at the rear of the unit in accordance with Sections 5.1 and 5.2.

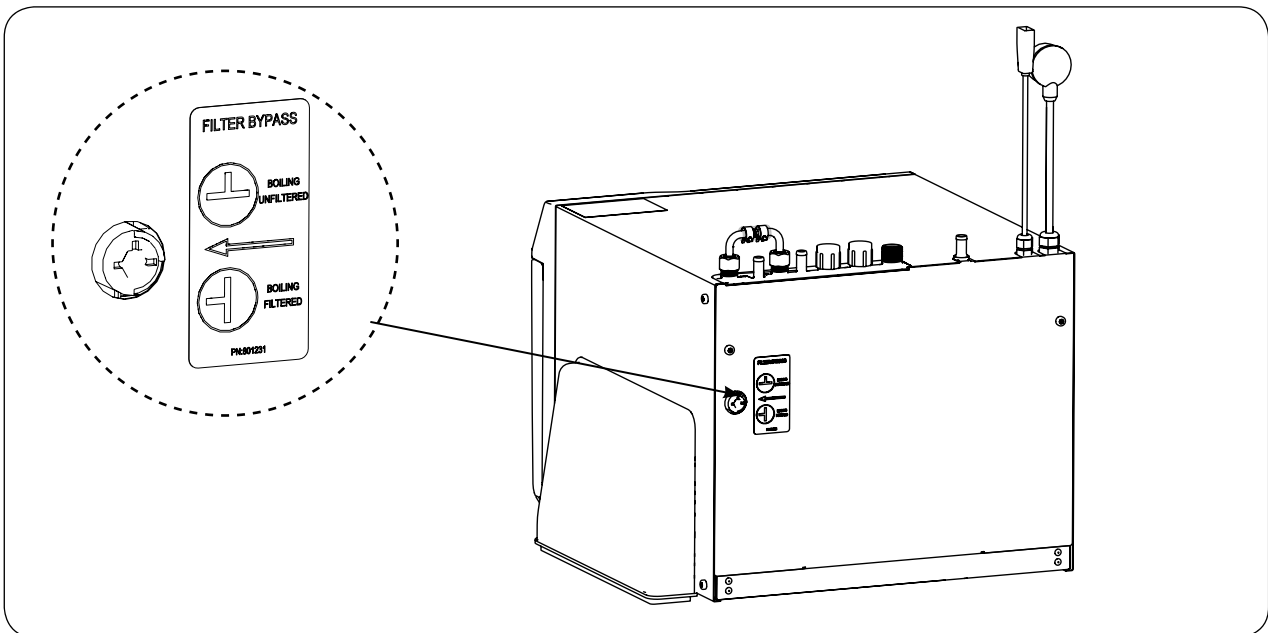
Section 5

Undersink Unit Installation

 **Note:** Before you install a unit, determine whether a water softener or an external filter is required.

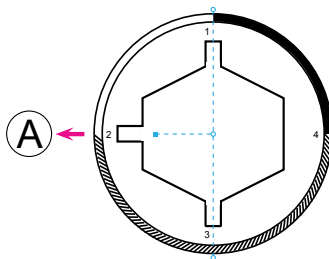
5.1 External Bypass Valve

The diverter bypass valve allows the user to choose to have the boiling feed water bypass the internal filter and only be filtered by the external filtration. This diverter valve is located at the rear panel of the Zip HydroTap undersink unit on the filter door side, see the image below.

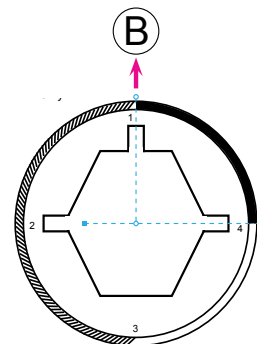


Check the table below to determine which filter bypass position you need for your product.

If no external filter is installed, select position A



If an external filter is installed, select position B

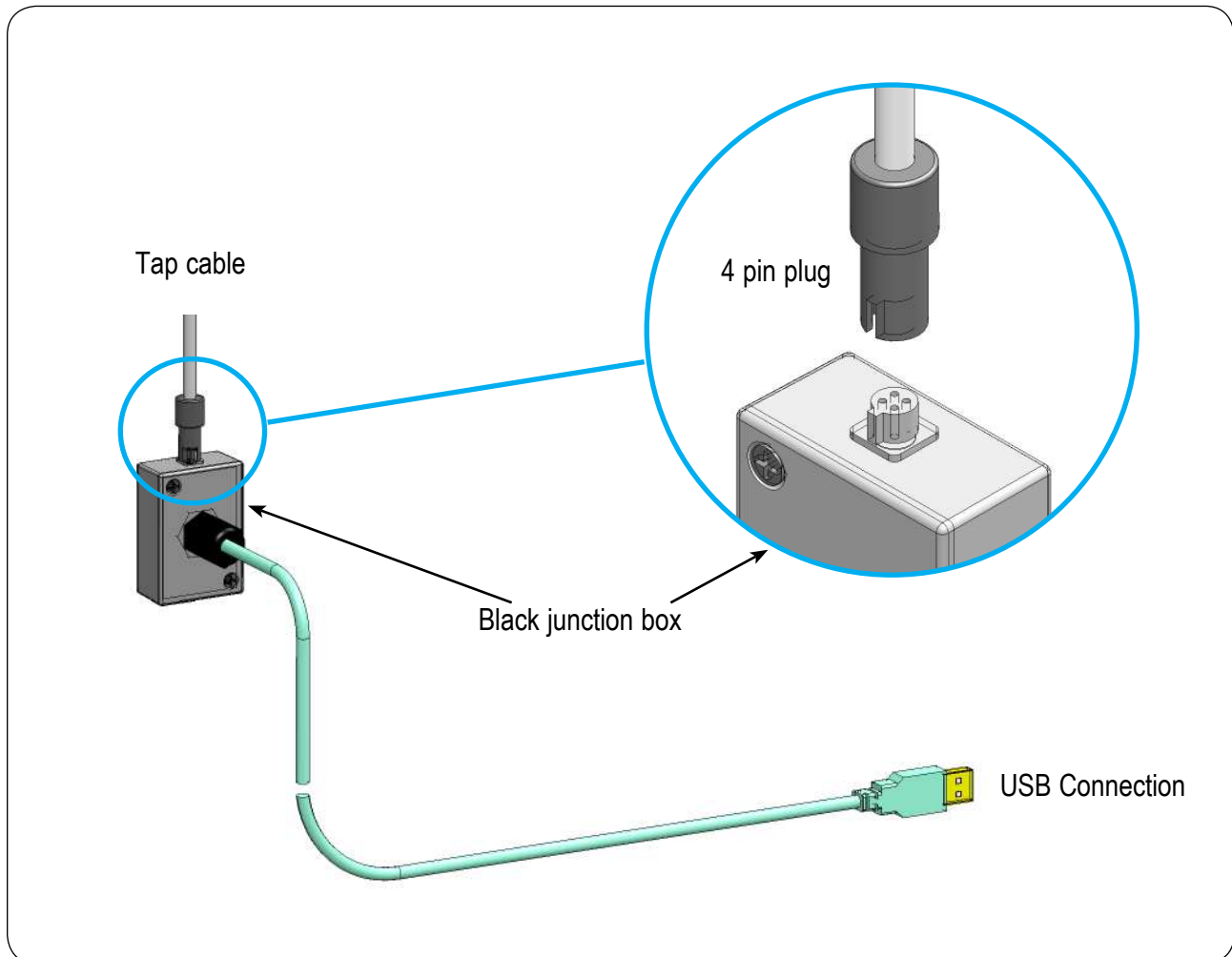


5.2 Hose and tube fitting. (Do not overtighten)

- Remove all caps from the top of the undersink unit
- Fit the foam insulation to the Red and to the Blue tubes after trimming them to length
- Install the mains water braided hoses to the undersink unit before locating the unit in place.

5.3 USB Connection

Connect the cable from the tap to the black junction box, using the round 4 pin plug. Orient the USB plug carefully and connect it to the undersink unit, do not force the plug. Once connected, fix the cable and junction box to the wall, ensure they are away from any possible water splashes and are off the floor.



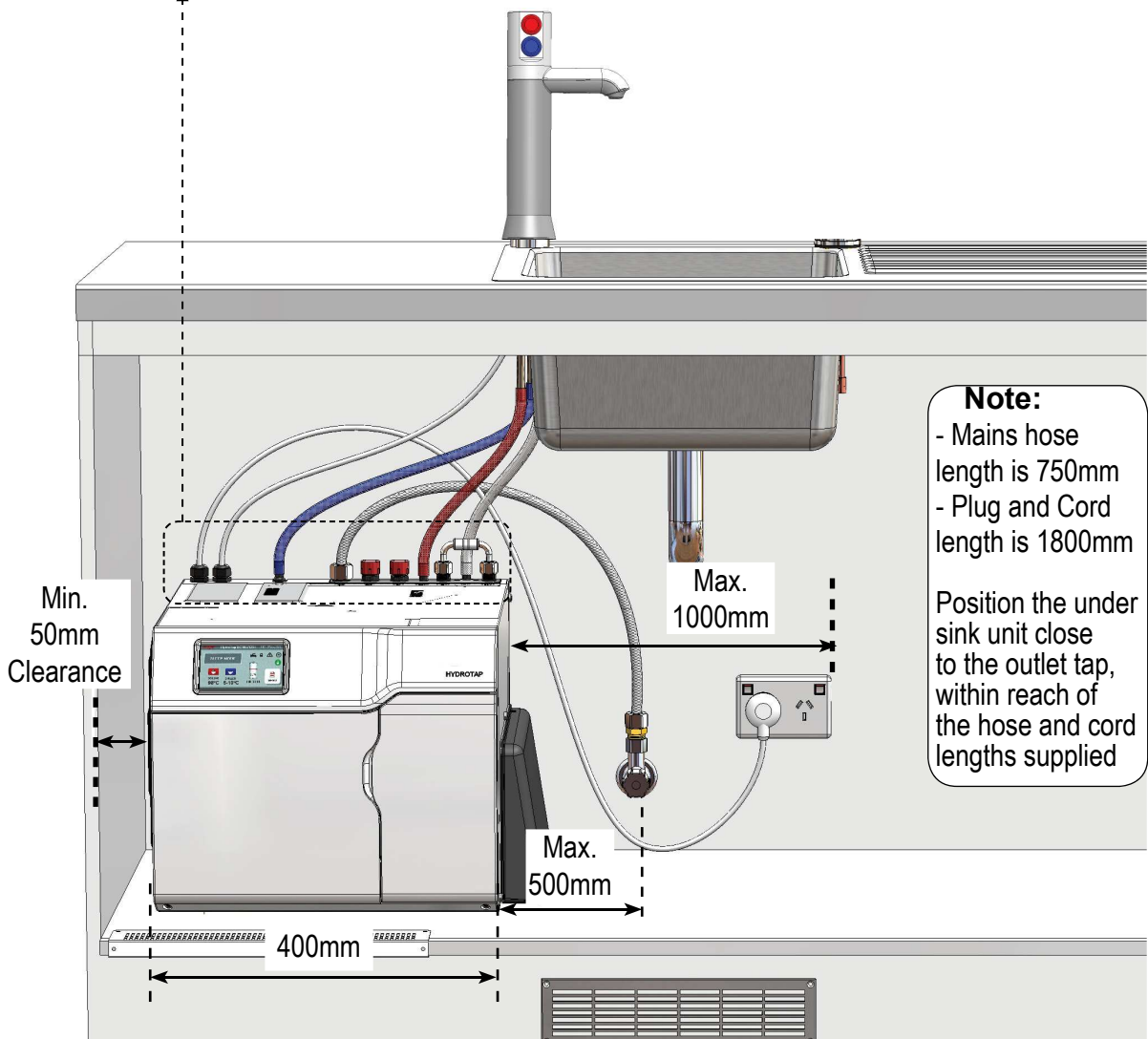
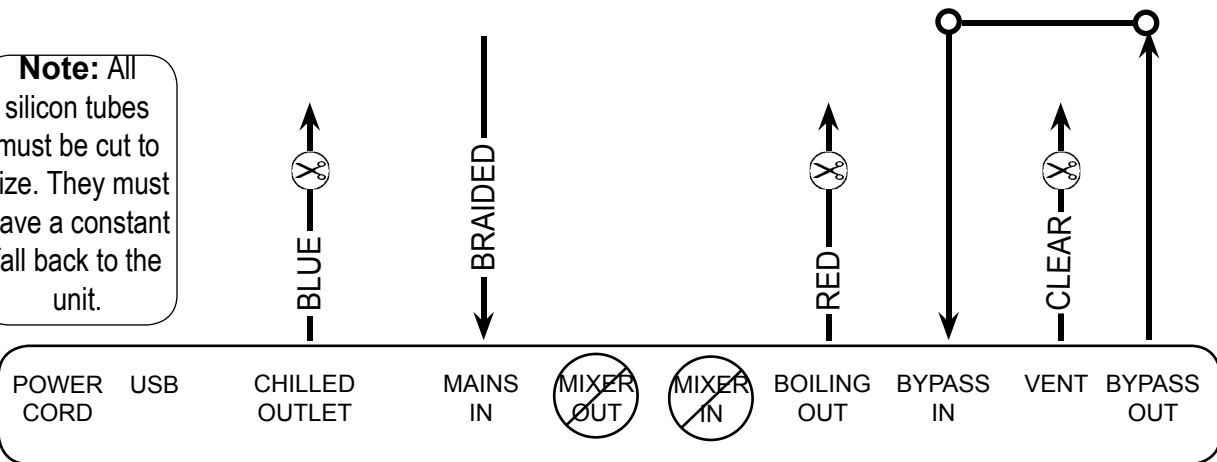
5.4 Connecting the water supply

To prevent sediment from entering the Zip HydroTap at connection, First, open the access door and check that the filter is in place and secure, then flush water through the supply line thoroughly, before connection to the HydroTap. Connect the water supply to the undersink unit using the attached flexible hose .

Installation Instructions

5.5 Models BC 160/125 and BC 160/175

Note: All silicon tubes must be cut to size. They must have a constant fall back to the unit.



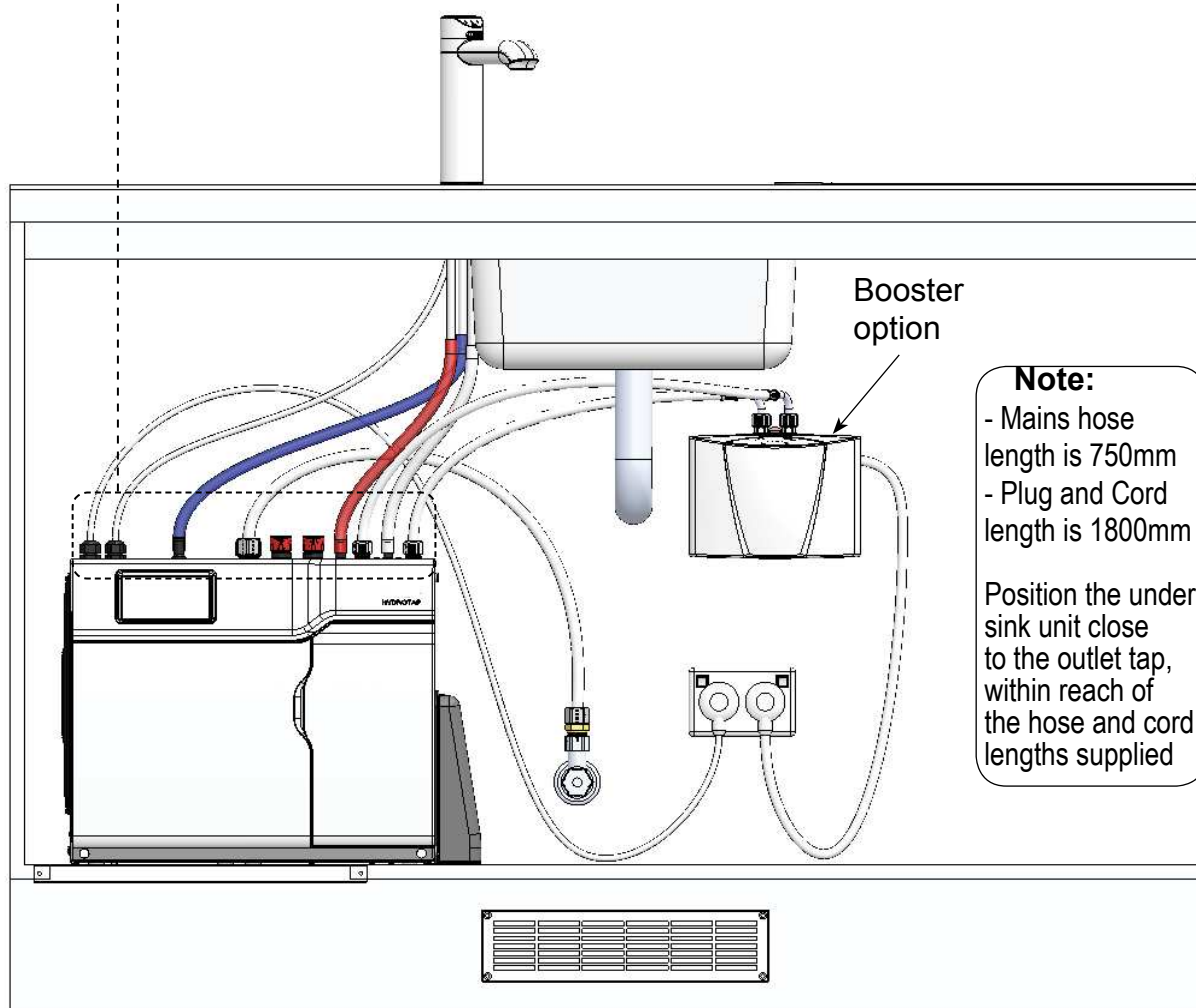
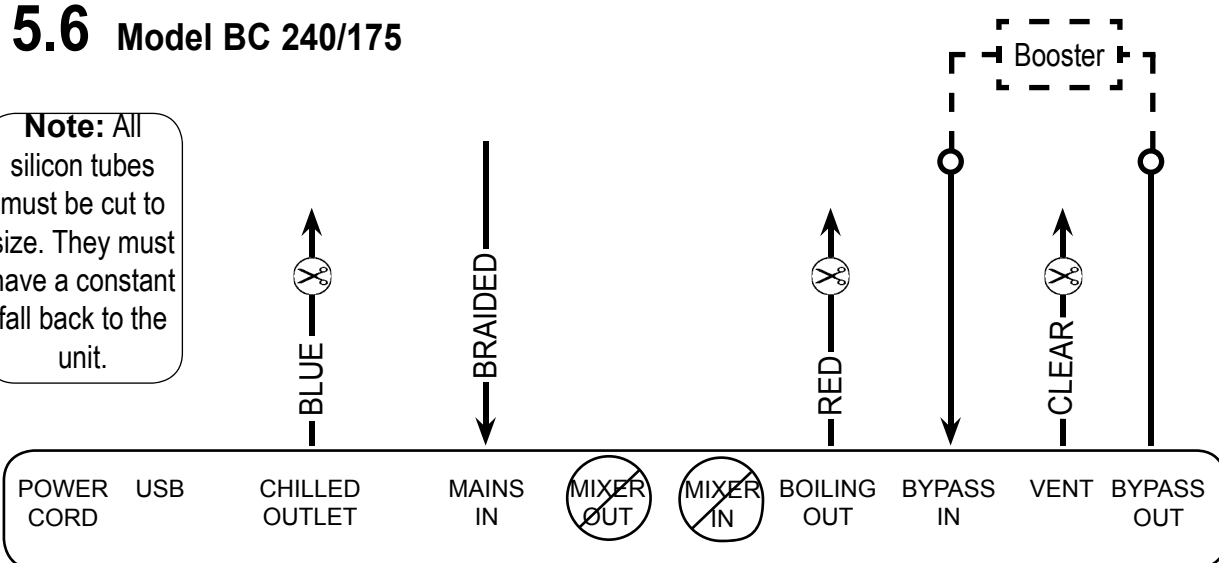
Note: The tube lengths are matched to the pumps performance and therefore CANNOT be lengthened

⊘ : Not required for standard BC HydroTap models.

Installation Instructions

5.6 Model BC 240/175

Note: All silicon tubes must be cut to size. They must have a constant fall back to the unit.



Note:

- Mains hose length is 750mm
- Plug and Cord length is 1800mm

Position the under sink unit close to the outlet tap, within reach of the hose and cord lengths supplied

Note: The tube lengths are matched to the pumps performance and therefore CANNOT be lengthened

⊘ : Not required for standard BC HydroTap models

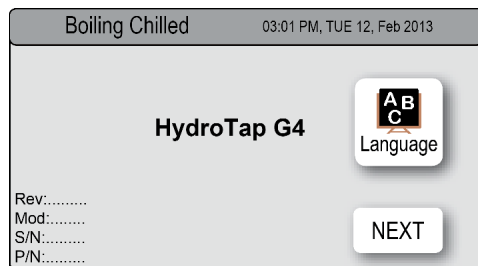
Section 6

Commissioning

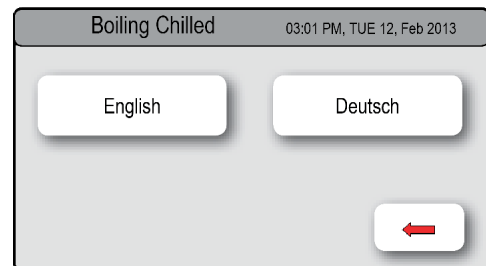
- Turn ON the water and check for any leaks.
- Turn the power ON at the GPO.
- If fitted, ensure the Booster is turned OFF. (The Booster is commissioned, later, at section 6.4)
- **To allow the dispensing of boiling water, the safety lock setting must be disabled using the touch screen.** Familiarise yourself with the operation of the Tap, in preparation for use (See User Guide)
- Follow the Installation instructions below (and review Section C of the User Guide).
- After commissioning, the system may be customised by selecting further options in Section G - Settings, within the User Guide.

6.1 - Select the Language

Initial Commissioning screen

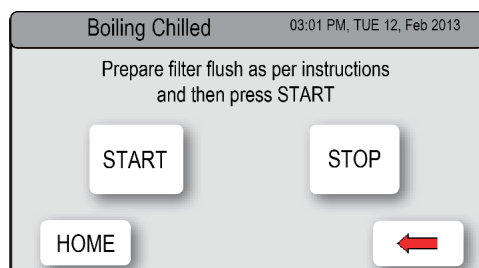
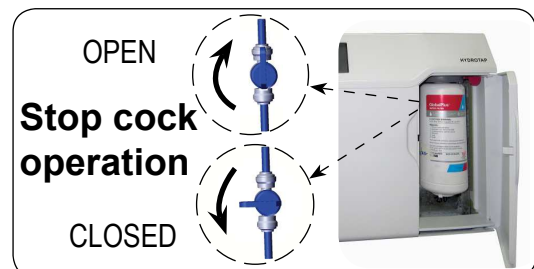


Language selection screen



6.2 - Filter Flush

Have a 10L bucket or similar container (not supplied) at the ready to hold a quantity of water that will be ejected while the Filter Flush Mode is in operation. Open the filter access door on the front of the HydroTap and the filter cartridge will be exposed. Located to the rear RHS of the cartridge is a flush line, approx 600mm long and the flush line stop cock. Place the valve end of the flush line into the 10L bucket or container.

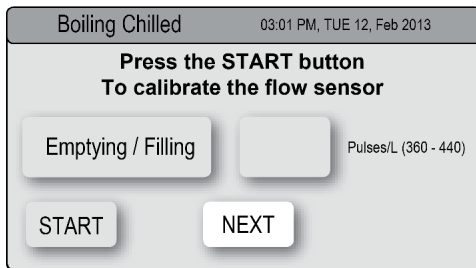


1. Turn the stop cock ON
2. Press [Start] [Stop] buttons to start and stop the filter flush.
3. Allow at least 10 litres of water to flush through the filter.
4. Once the filter flush is finished, Turn the stop cock OFF then press [Stop] to end filter flush mode.
5. Press [Next] and the View screen will show the Flow calibration mode.



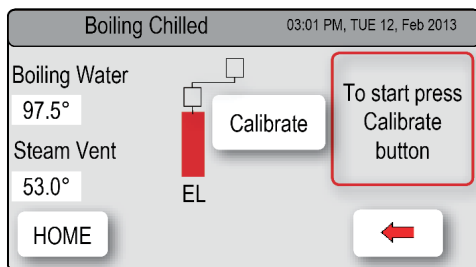
NOTE: For any subsequent filter changes or any operational procedures, please refer to the HydroTap user guide, located inside the filter housing access door.

6.3 - Flow Calibration



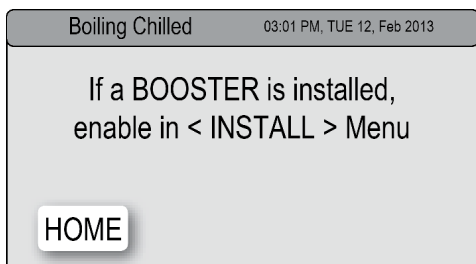
1. Press the [Start] button and the tank will first empty then fill. This will take approx 5 minutes.
2. Upon completion the actual pulse will be displayed.
3. Press [Next] for the Boiling Calibration screen.

6.4 - Boiling Calibration



- Press the calibration button and the system will commence the Boiling calibration procedure. This will take approx 5-6 minutes.

6.5 - Booster



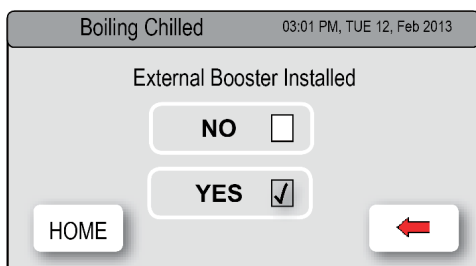
- Upon completion, a Booster reminder screen will appear and allow you to return home by pressing the [Home] button.
- Check the Date and Time settings (See Note below)



Note: failing to make the correct selection for the “Booster”, will affect product performance.

Note: Depending on your location you may need to re-set the internal clock. See section G of the user guide to check and if necessary, reset the Date and Time for your time zone.

To enabled when a Booster unit is installed.

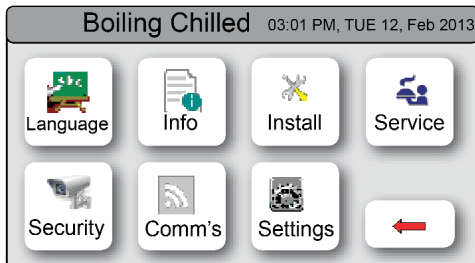


HydroTap Booster Screen

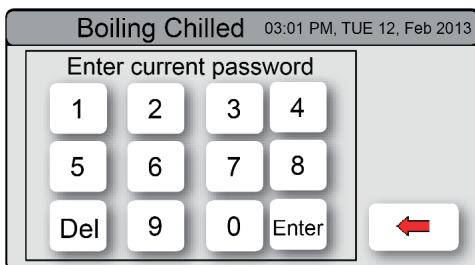
1. Press the [MENU] button for main menu.
2. Press the [Install] button.
3. Press the [Booster] button.
4. In the next screen, press YES to enable the Booster.
5. Turn the Booster ON
6. Water must be run through the Booster for a min of 30 seconds, before the heater will activate.
7. Dispense boiling water for 30secs and check the Booster outlet hose is warm when the boiling water tank is replenishing.

6.6 - Legacy Mode (All IS and IT Taps)

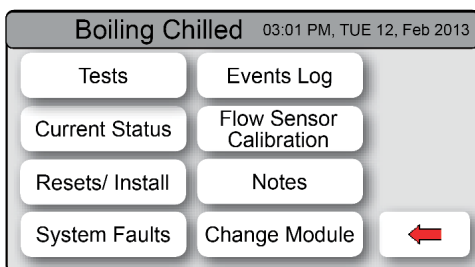
NOTE: Legacy mode must be [Enabled] for all IS and IT taps to function with G4 Under bench units.



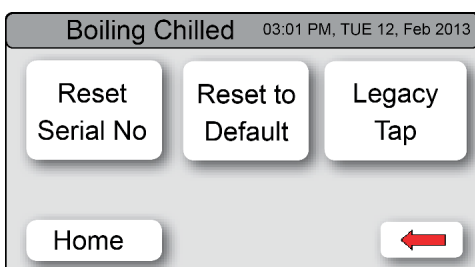
1. Press the [MENU] button for main menu.
2. Press the [Service] button.



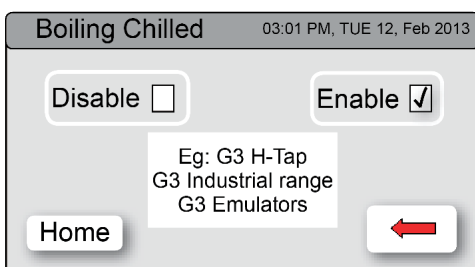
1. Enter the current password.
(Please contact your local service centre for details).



1. Select [Resets/ Install]



1. Select [Legacy Tap]
2. In the next screen select [Enable]



Note: Once the unit has been set to operate in Legacy mode it will stay in legacy mode, even if the power is turned OFF and ON.
Legacy mode will be disabled if the unit is re-set to the factory default settings. In this instance, it will be necessary to re-enable the legacy mode settings as shown above.

Trouble Shooting

System Fault Message	Possible Cause	Solutions
Power board fault	Electrical disruption	Check power supply and all fuses
Interface fault	Internal fault	Call Zip Service
Level board fault	Internal fault	Call Zip Service
Condenser screen blocked	Blocked Air filter	Remove blockage / Clean filter / check user guide
Water leak, Isolate mains	Water leak	Turn off mains water supply / Call for service
Compressor over-run	Compressor too Hot	Check ventilation
Water supply failed	No water	Check water supply is turned ON
Hot sensor Open	Internal fault	Call Zip Service
Hot sensor Closed	Internal fault	Call Zip Service
Cold sensor Open	Internal fault	Call Zip Service
Cold sensor Closed	Internal fault	Call Zip Service
Flood sensor Open	Internal fault	Call Zip Service
Condenser sensor Closed	Internal fault	Check Ventilation / Call Zip Service
Condenser sensor Open	Internal fault	Check ventilation / Call Zip service
Heater fuse / driver fault	Internal fault	Call Zip Service
Heater driver fault	No hot water	Call Zip Service
Compressor driver fault	No chilled water	Call Zip Service
Hot sensor degraded	Internal fault	Call Zip Service
Condenser over temp.	Blocked air filter	Remove blockage / Clean filter / check user guide
Cold overload	Internal fault	Call Zip Service
Steam is too cool	Internal fault	Call Zip Service
Steam sensor Open	Internal fault	Call Zip Service
Steam sensor Closed	Internal fault	Call Zip Service
Hot overload	Internal fault	Turn OFF to reset / Call Zip Service
Hot tank overfilled	Internal fault	Call Zip Service
Outputs fuse fault	Internal fault	Call Zip Service
Safety lock ON	Safety button active	See User guide Section - G (Safety mode)
Safety lock OFF	Safety button Inactive	See User guide Section - G
Hot Isolation ON	Safety button active	See User guide Section - G
Hot Isolation OFF	Safety button Inactive	See User guide Section - G
Hot Isolation Enabled	Safety button active	See User guide Section - G
Hot Isolation Disabled	Safety button Inactive	See User guide Section - G
Sleep mode Enabled	Auto sleep mode active	See User guide Section - G (Energy Mode)
Sleep mode Disabled	Auto sleep mode inactive	See User guide Section - G (Energy Mode)
Calibration	Auto calibration reset	Normal operation, once per month
Overload Reset	Internal fault	Call Zip Service

Call an electrician, a plumber, or Zip on 1 800 63 86 33 for assistance, service, spare parts or enquiries.

End of Life Disposal

In order to help preserve our environment we ask that you dispose of this product correctly. Please contact your local city council for collection centre details.

Contact Details

Head Office

Zip Heaters (Aust) Pty. Ltd.
ABN: 46 000 578 727
67 Allingham Street
Condell Park NSW 2200
Postal: Locked Bag 80
Bankstown 1885 Australia

Website: www.zipwater.com

Facsimile: (02) 9796 3858
Telephone: (02) 9796 3100
Sales & Service.
Free Call: 1 800 63 86 33
Customer Care.
Free Call: 1 800 42 43 44

As Zip policy is one of continuous product improvement, changes to specifications may be made without prior notice. Images in this booklet have been modified and may not be true representations of the finished Goods.

The standard cup referred to in this publication is 167 ml (6 fl oz).

The standard glass is 200 ml (7 fl oz).

The terms "Zip" and "HydroTap" are registered trade marks of Zip Heaters (Aust) Pty Ltd.

Zip products described in this publication are manufactured under one or more of the following patents: AU675601, AU637412, AU635979, GB0422305, GB2065848, US4354049, US5103859, US5099825 and SA2006/08043. Other patents are in force and patent applications are pending.

