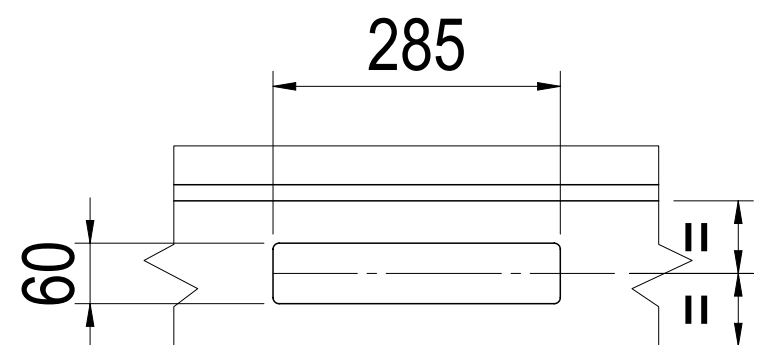
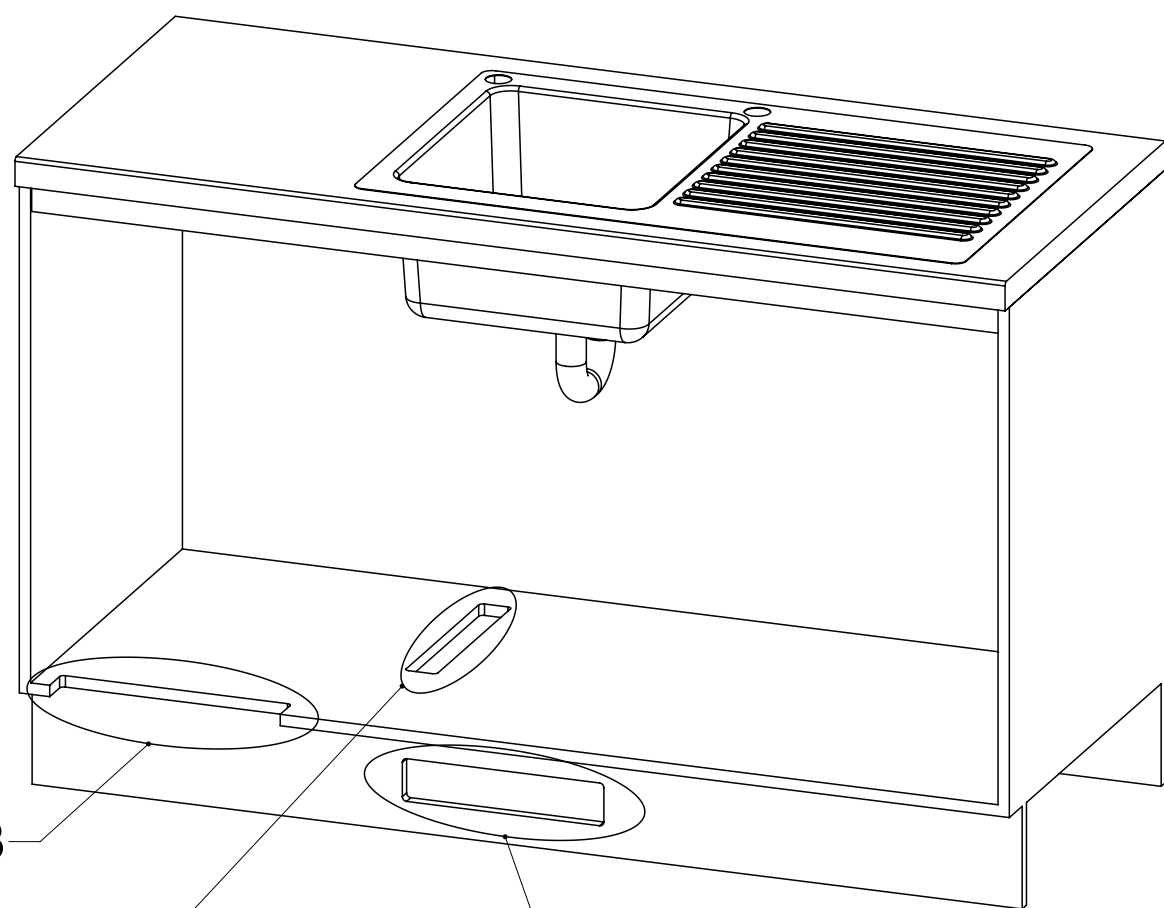
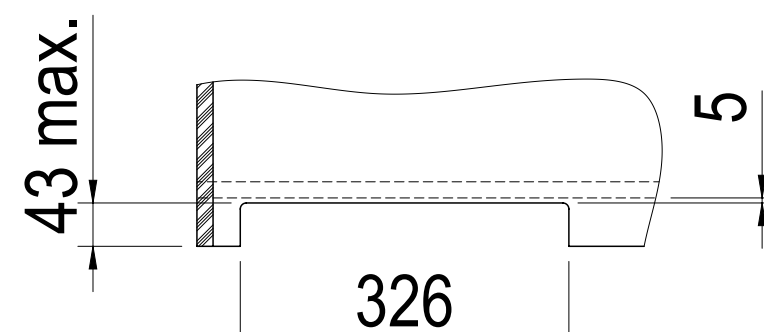


Sheet1 (Default)						
Table - Zip BOM (Assembly + Make/Buy)						
Item	Part	Rev	Description	Status	Qty	Make or Buy
3	903221	C	Ar Inter Exp Cnt	Production	1	Make
3	903222	C	Kc Inter Exp Cnt	Production	1	Make
6	27250	A	75 HighSpeed Router BX2 2.2W 10A	Production	1	Buy
6	9451	A	The 10" BSP Frame (MBX)	Production	1	Buy
9	87722	B	Asy- Rest-Ach Frame w/ a2.5 Hole	Production	1	Buy
10	80263	C	HydTo Act Pump	Design	1	Buy
11	5353AU	C1	Hydrostat A4 S1 Sparking	Prototype	1	Buy
17	92119	A	Hydrostat A4 S1 Sparking	Production	1	Buy
18	92119	A	KC2 - 2.6kg Gas (new)	Production	1	Buy
28	93256	A	Regulator CO2 - 2kg	Production	1	Buy
29	Part19K002 N1C	00	Description (Config)	Design	1	Buy
30	9202808	00	Description (Config)	Design	1	Buy

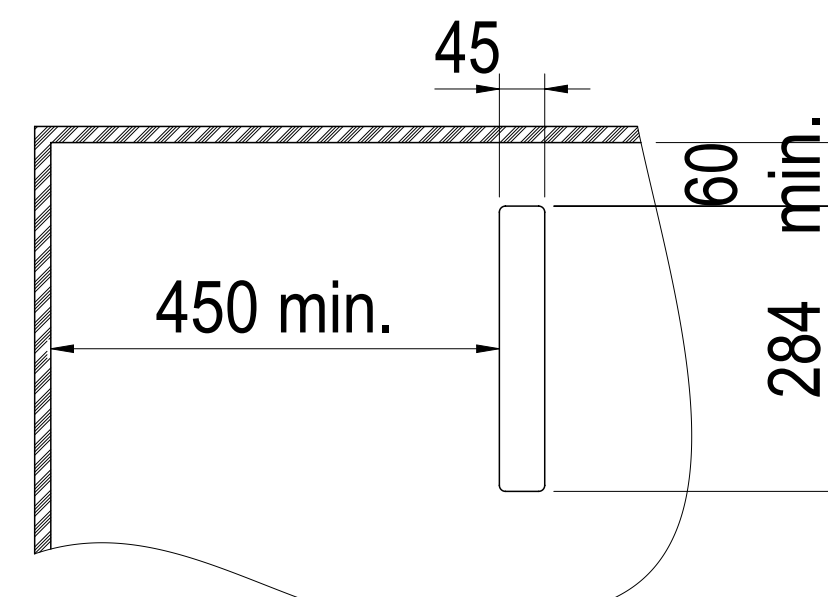


DETAIL A: Kickboard Cut-Out

SCALE 1 : 7.5



DETAIL B: Cabinet Floor Cut-Out
SCALE 1 : 7.5

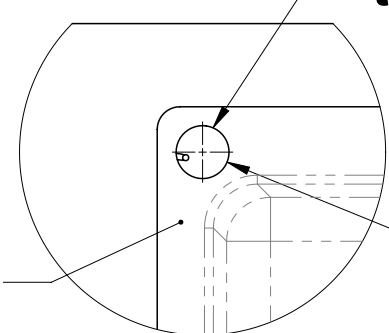


DETAIL C: Cabinet Floor Cut-Out



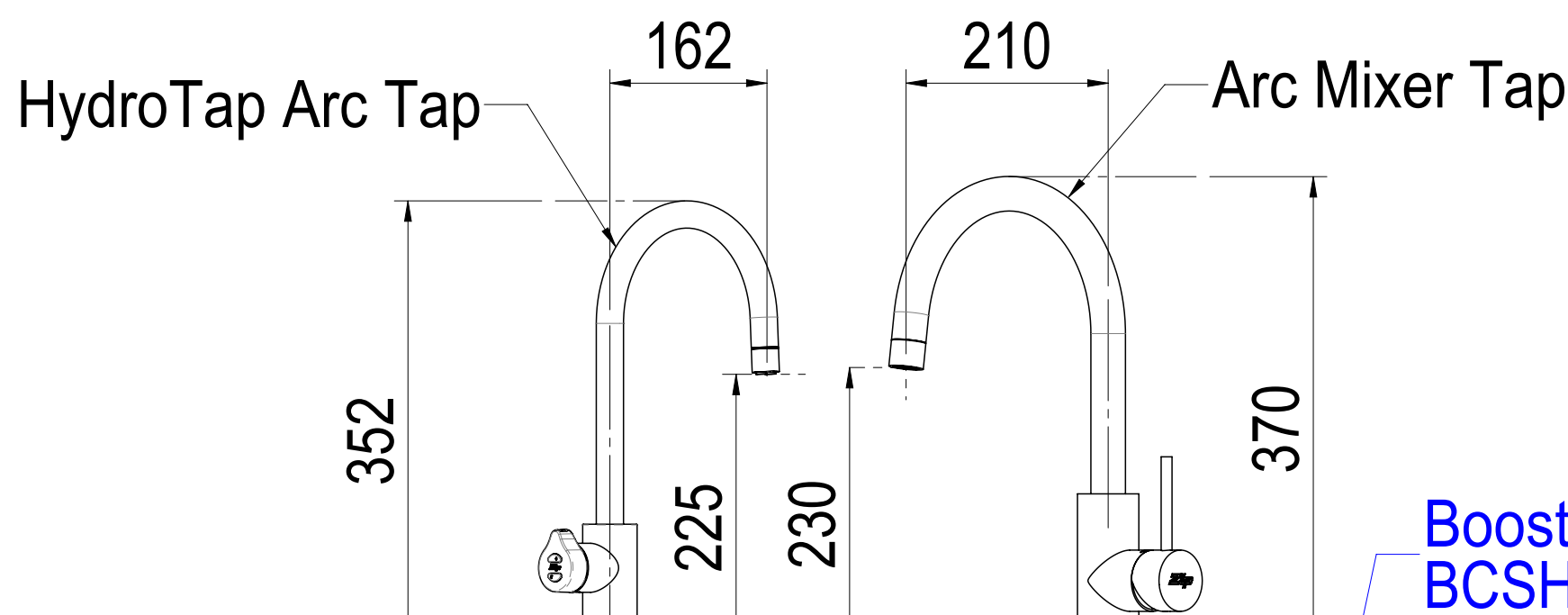
Ventilation Details

Position the Tap such that it dispenses into the sink bowl with ample clearance for a cup or a tea pot. Alternatively, the Tap could be mounted away from the sink using a Zip Font available as an accessory.



Sink shown
only

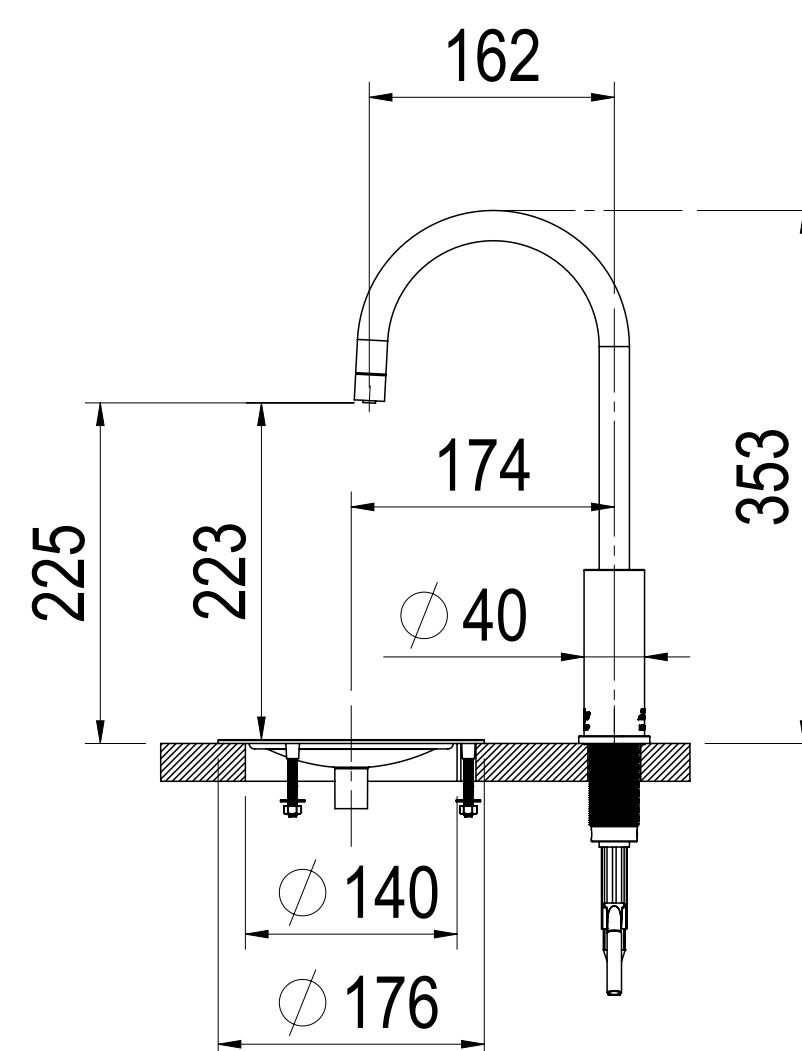
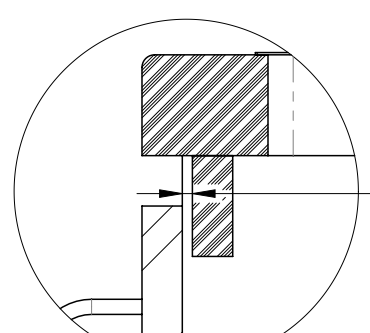
Ø 35 Hole for HydroTap Arc Tap



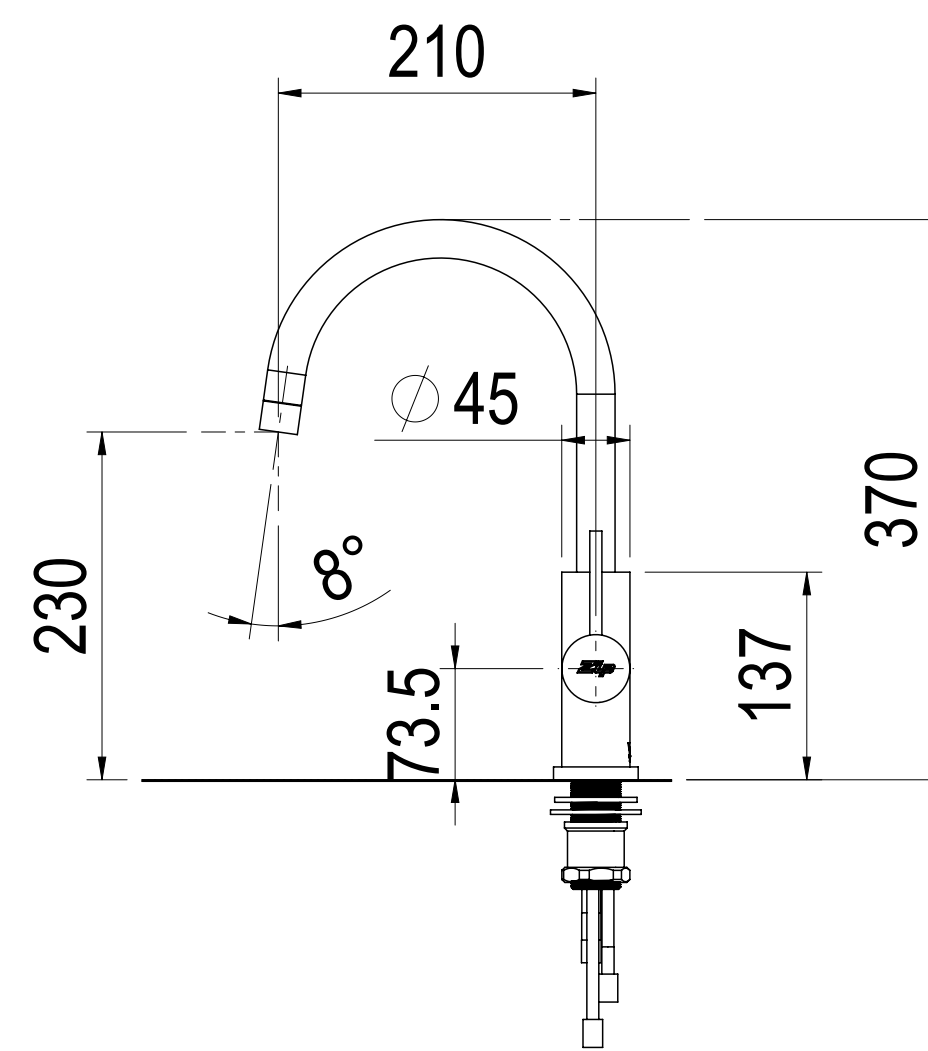
Only HydroTap Arc
Tap shown

4 min.
Buffer Pad
Air Space

Booster (Not used on BCSHA 160/175 models)

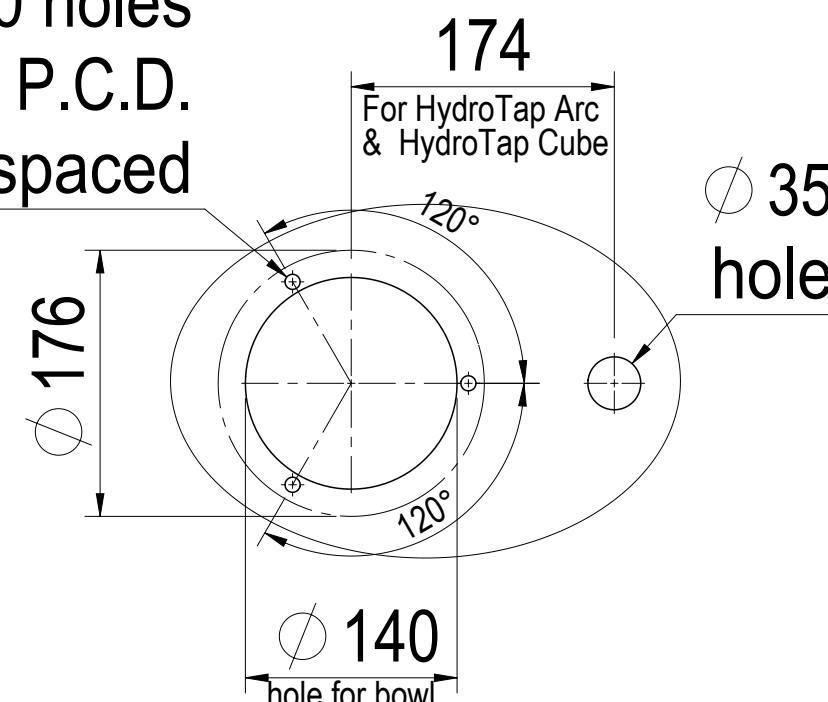


HydroTap Arc with Font



Arc Mixer Tap
Provide ø35mm hole on sink

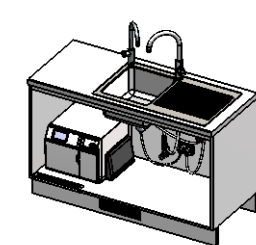
3- \varnothing 10 holes
@ 155mm P.C.D.
equispaced



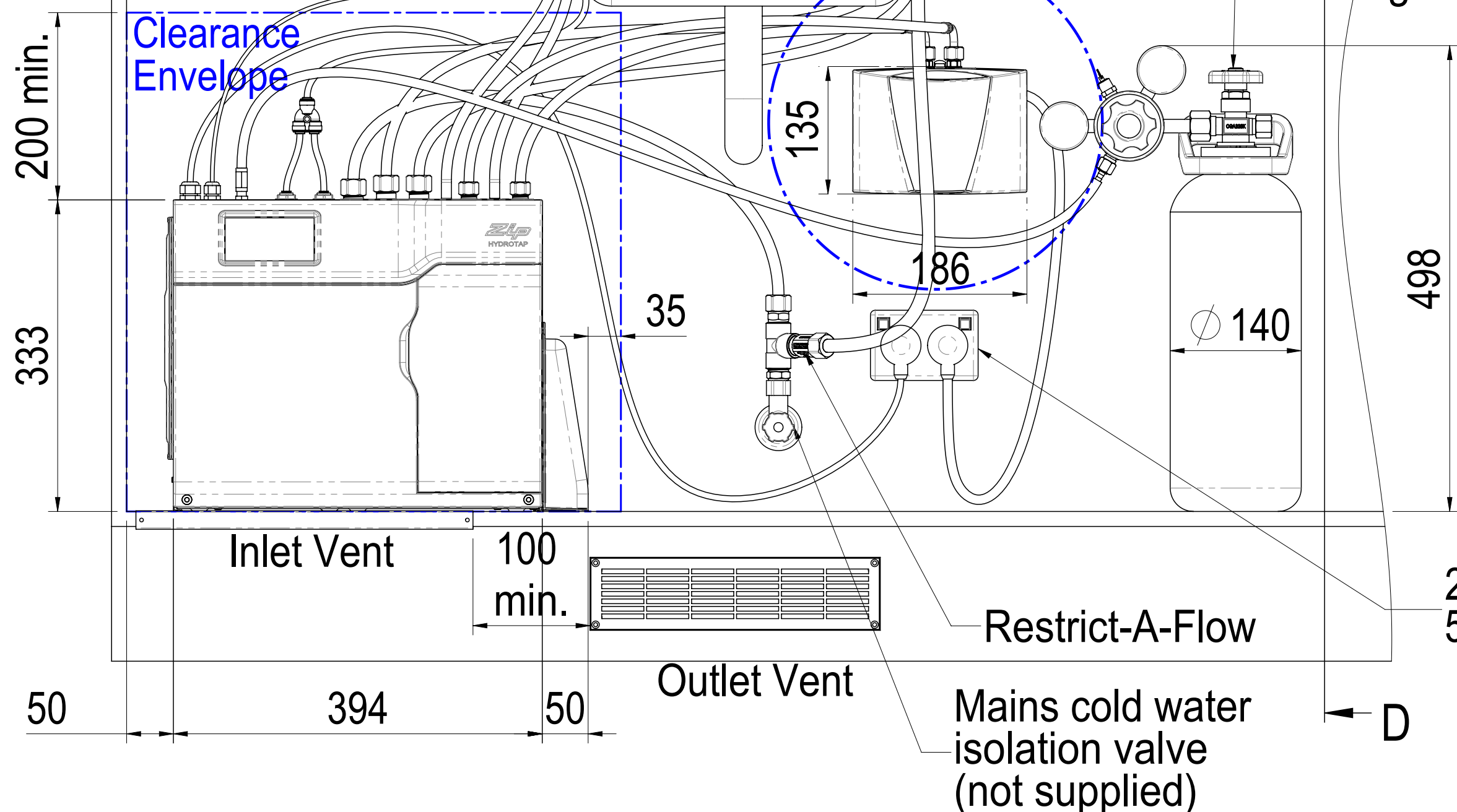
Cutting Detail for HydroTap Arc with Font

This set-up is applicable to:

5in1 BCSHA160/175 (Excluding Booster)
HT2775: 5253AU0T0AN1C w/ HydroTap Arc Tap + Arc Mixer Tap
5in1 BCSHA240/175 (With Booster)
HT2776: 5353AU0T0AN1C w/ HydroTap Arc Tap + Arc Mixer Tap



Configuration : Default



SECTION D-D
SCALE 1 : 5