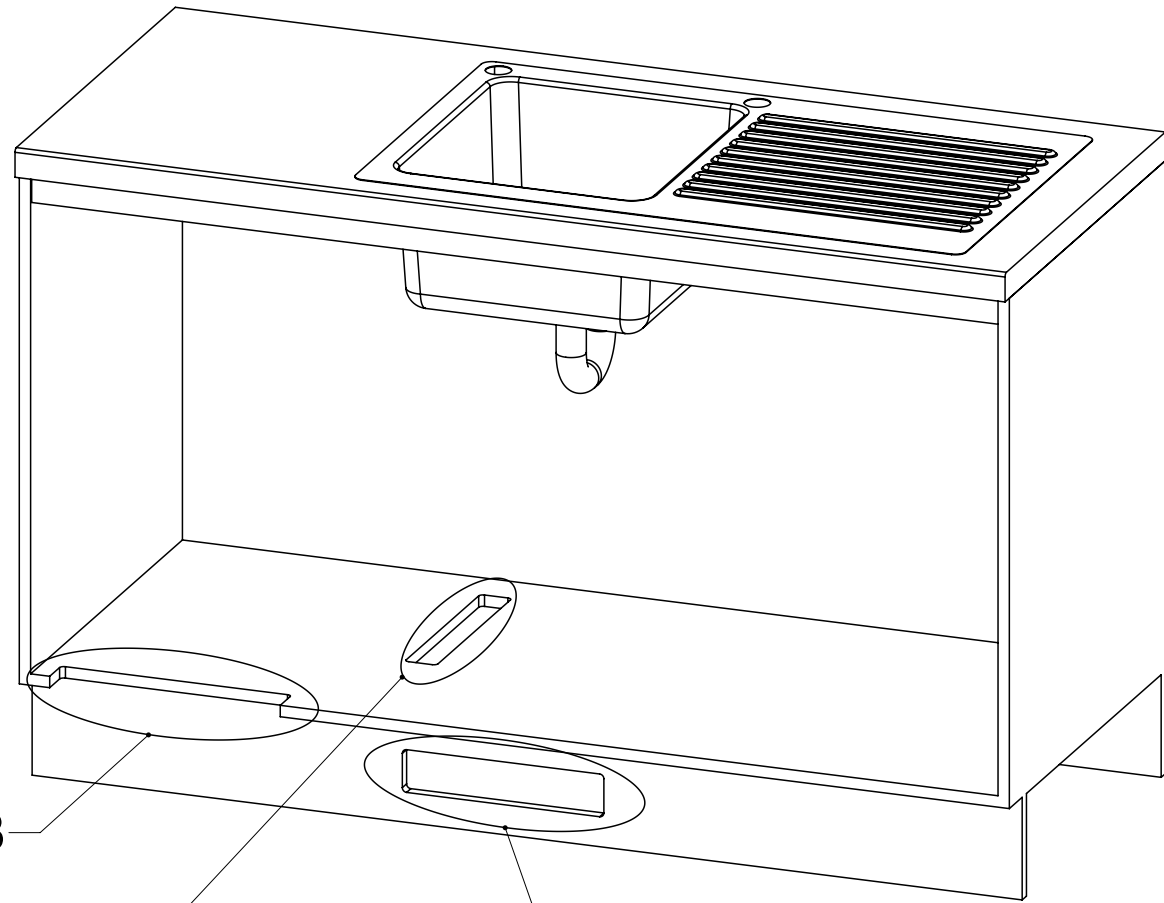


Table - Zip BOM (Assembly + Make/Buy)						
Item	Part	Rev	Description	Status	Qty	Make or Buy?
3	800221	C	Air Inlet Grill CFF	Production	1	Make
5	800220	C	Kickboard Fan Grill	Production	1	Buy
6	27200	A	Zip Hydrotap Booster MBX2 2.2kW 10A 230V	Production	1	Buy
8	84451	A	Tee 1/2" BSP Female (Brass)	Production	1	Buy
9	87122	B	Key - Restrict-A-Flow with x0.5 Hole	Production	1	Buy
10	87570	A	Pacific Tap - Classic Mixer Tap	Production	1	Buy
11	5353AU1	D1	Hydrotap G4 5in1 Sparkling BCSHA160/175 w/Restrict-A-Flow	Prototype	1	Buy
15	802944	00	Elite Tap Boiling Chilled Sparkling	Design	1	Buy
18	87653	A00	Reducer JO 3/8-1/4	Design	1	Buy
23	83223	A	KIK CO2 - 2 Bkg Gas-Regulator+Straps	Production	1	Buy



Ventilation Details

Position the Tap such that it dispenses into the sink bowl with ample clearance for a cup or a tea pot. Alternatively, the Tap could be mounted away from the sink using a Zip Font available as an accessory.

Sink shown only

Ø 35 Hole for Elite Taps

Elite Tap

Classic Mixer Tap  
(See other Mixer Tap options)

4 min.  
Buffer Pad  
Air Space

Booster (Not used on  
BCSHA 160/175 models)

CO<sub>2</sub> gas cylinder  
& regulator

Clearance  
Envelope

Clearance  
Envelope

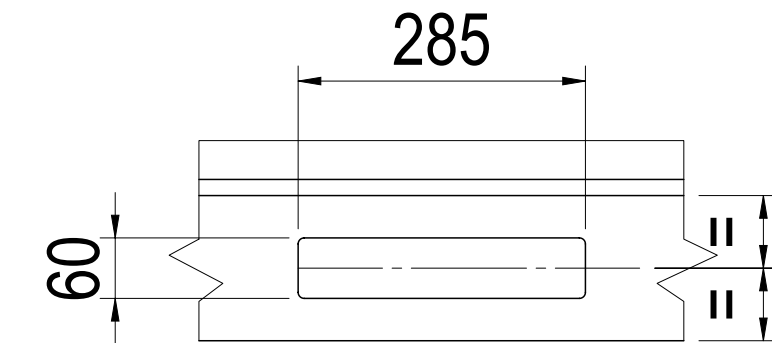
Inlet Vent

Outlet Vent

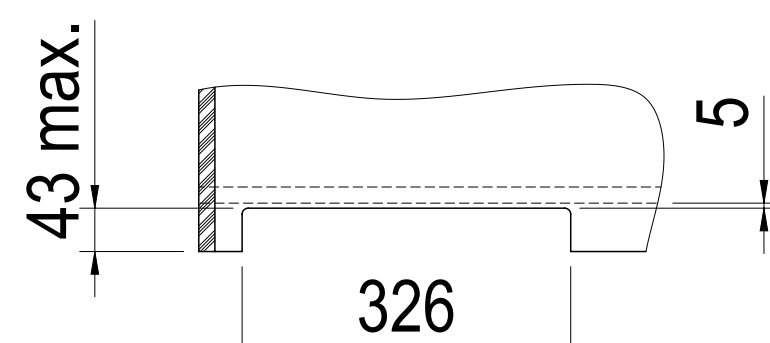
Restrict-A-Flow

240 - 230V,  
50Hz GPO

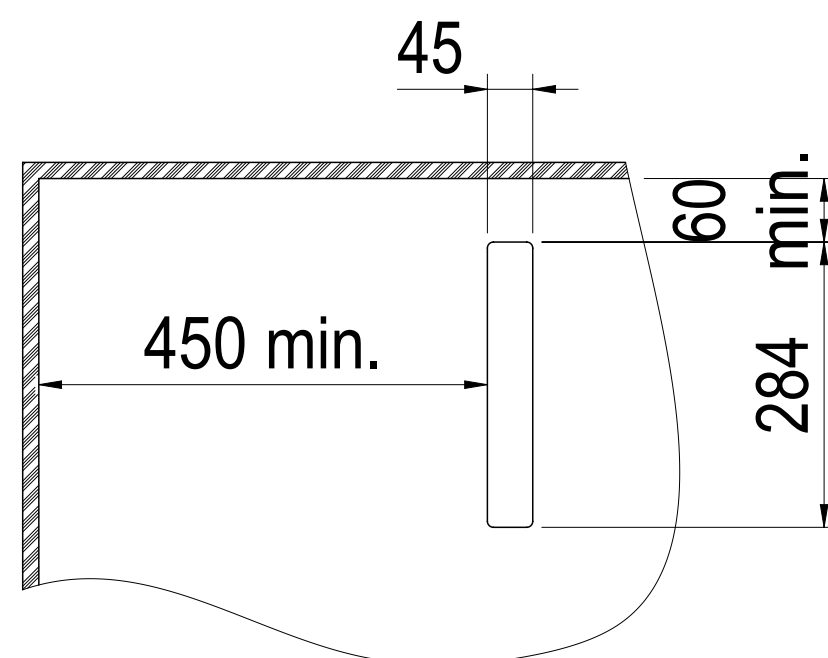
Mains cold water  
isolation valve  
(not supplied)



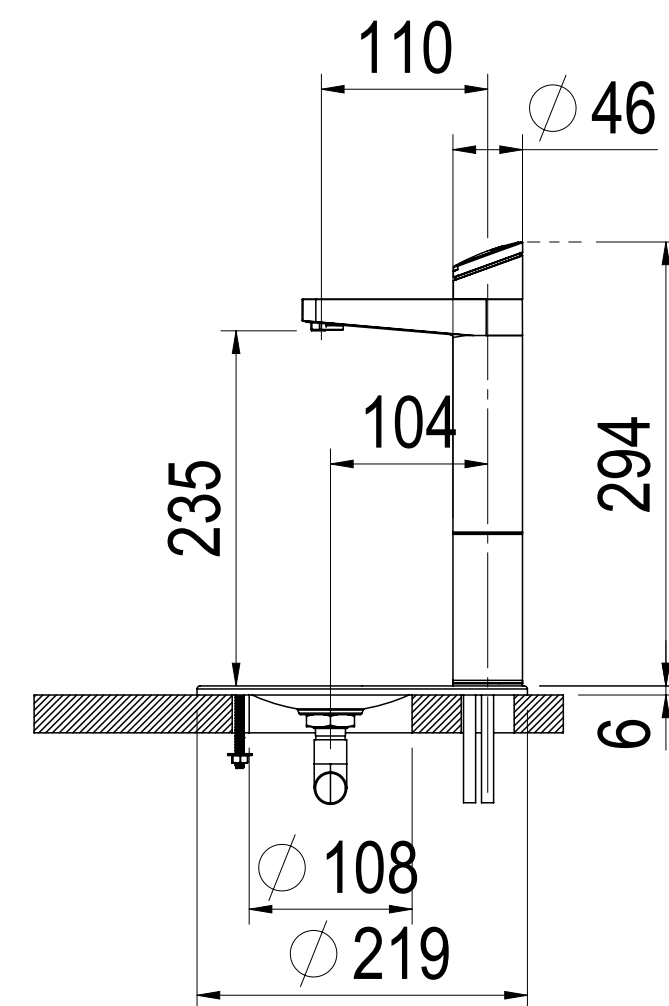
DETAIL A: Kickboard Cut-Out  
SCALE 1 : 7.5



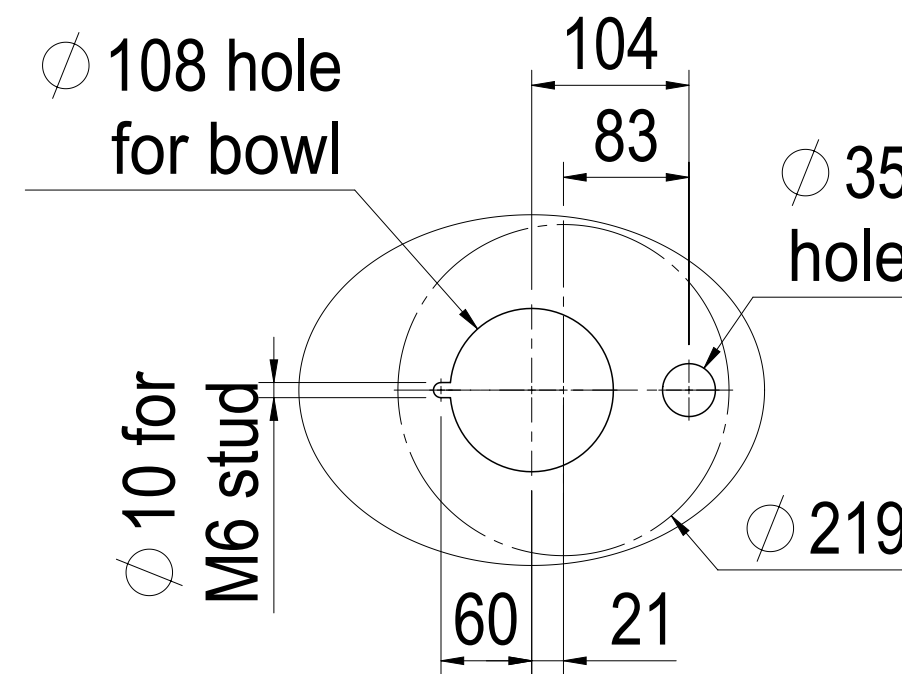
DETAIL B: Cabinet Floor Cut-Out  
SCALE 1 : 7.5



DETAIL C: Cabinet Floor Cut-Out  
SCALE 1 : 7.5

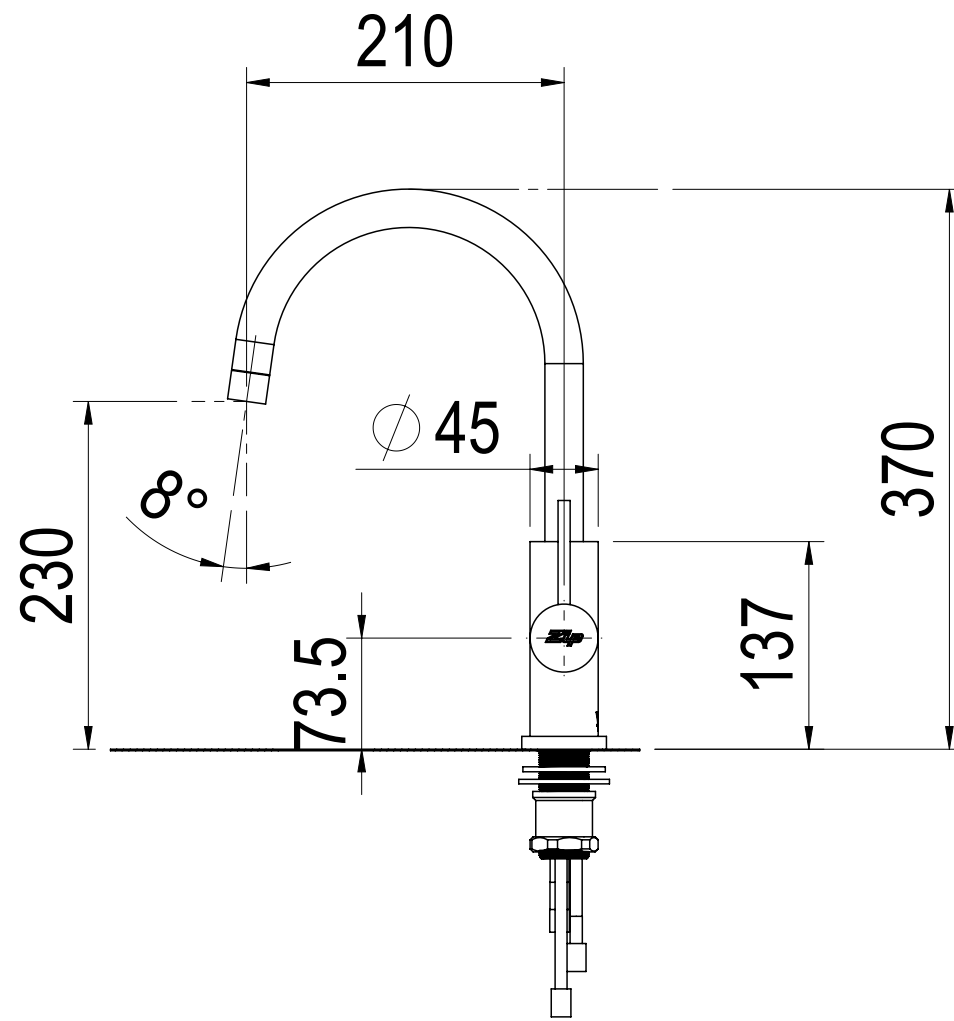


Elite Tap with Font

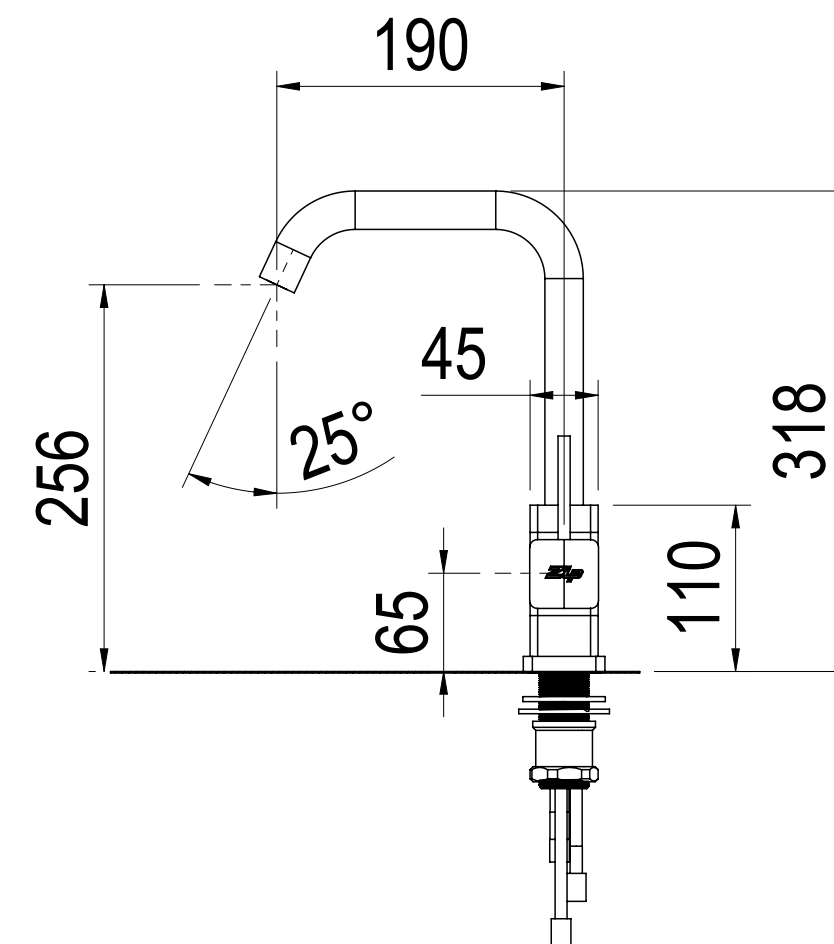


Cutting Detail for  
Elite Tap with Font

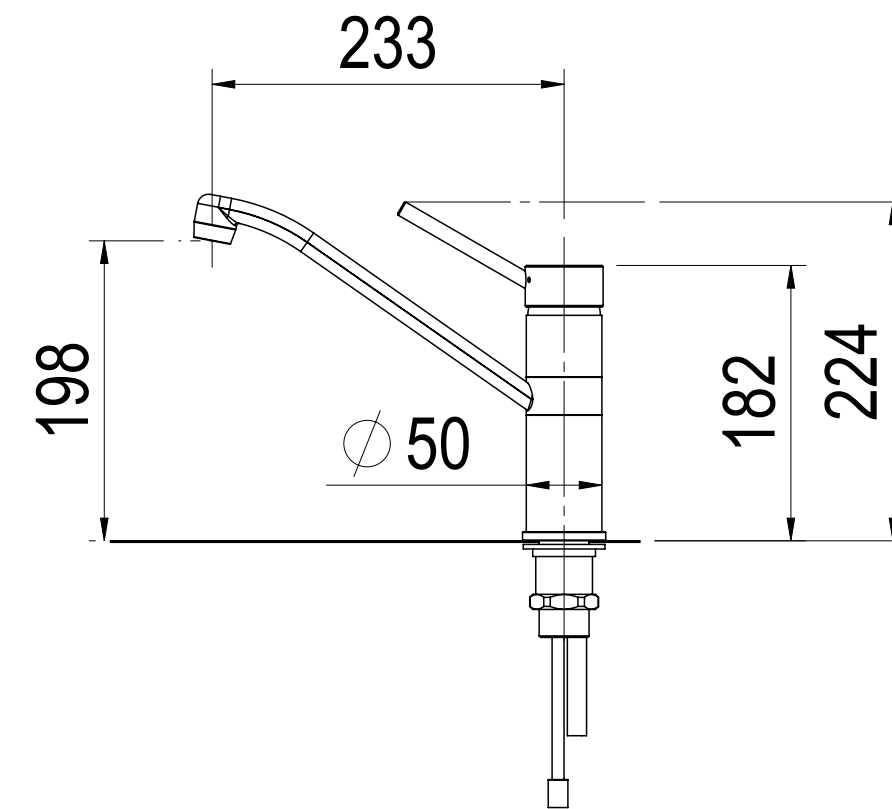
MIXER TAP OPTIONS  
Provide ø35mm hole on sink



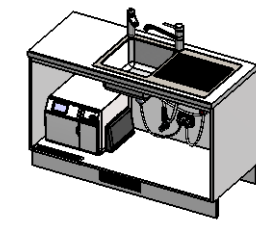
Arc Mixer Tap



Cube Mixer Tap



Classic Mixer Tap



Configuration : Default

This set-up is applicable to:  
5in1 BCSHA160/175 (Excluding Booster)

HT4775: 5253AU0E4CN1C w/ Elite Tap + Classic Mixer Tap

HT4275: 5253AU0E4AN1C w/ Elite Tap + Arc Mixer Tap

HT4375: 5253AU0E4UN1C w/ Elite Tap + Cube Mixer Tap

5in1 BCSHA240/175 (With Booster)

HT4776: 5353AU0E4CN1C w/ Elite Tap + Classic Mixer Tap

HT4276: 5353AU0E4AN1C w/ Elite Tap + Arc Mixer Tap

HT4376: 5353AU0E4UN1C w/ Elite Tap + Cube Mixer Tap

SECTION D-D  
SCALE 1 : 5

This drawing is CONFIDENTIAL and is supplied on the express condition that it will not be LOANED, COPIED or DISCLOSED to any other third party or used for any purpose without the written consent of Zip Industries Pty Ltd. This document is printed in hardcopy form. It is for INFORMATION ONLY and therefore not subject to updating controls. For the current revision ALWAYS refer to the MATING electronic form as stated in the top left hand corner of this sheet. © copyright Zip Industries Pty Ltd. 29542015				Zip Industries <b>Zip</b>			
Manufacturing Instructions				Description			
Approved by: edg on 23/07/2015				Assy-Kitchen Layout (Hydrotap G4 BCSHA 240/175 Unit & Elite Tap + 5in1 Mixer Tap w/ Booster)			
Manufacturing Route: Manufacturing Process				Created by & on			
Updated by: edg on 14/02/2015 12:58:44 PM				Edg on 4/05/2011			
Raw material: See Components				Project: Hydrotap G4B			
Material: See Components				Model: KL002_5353AU0E4CN1C			
Remove all sharp edges. This drawing ONLY details information which cannot be ascertained from the 3D geometry of the part(s) attached. Model & dimensions are AFTER all finishing operations.				Created by & on			
Finish: Finish				KL002_5353AU0E4CN1C			
Volume (mm³): 6355.5				Derived from: New			
Mass (g): 95192.0				Colour: Colourless			
Positiv? NO				Status: Prototype			
Recyclable? NO				Config: Property			
Handed? NO				Size: A1			
Scale: 1:1				Sheet: 1 of 1			