

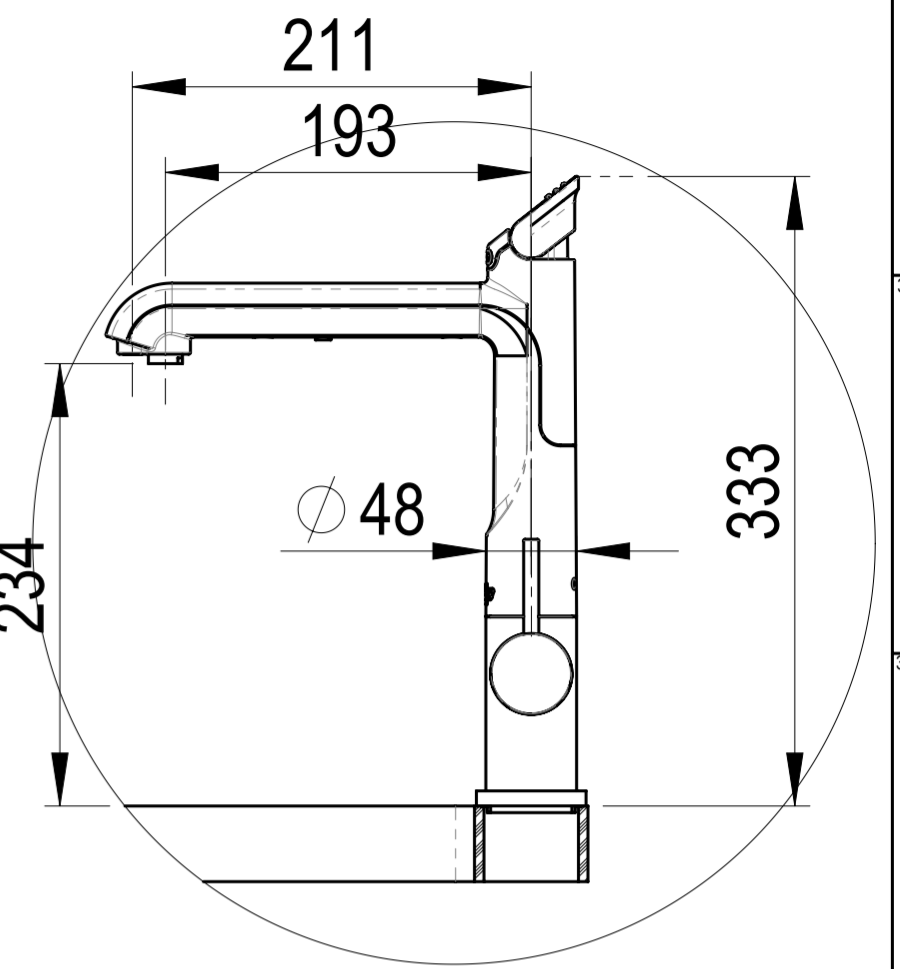
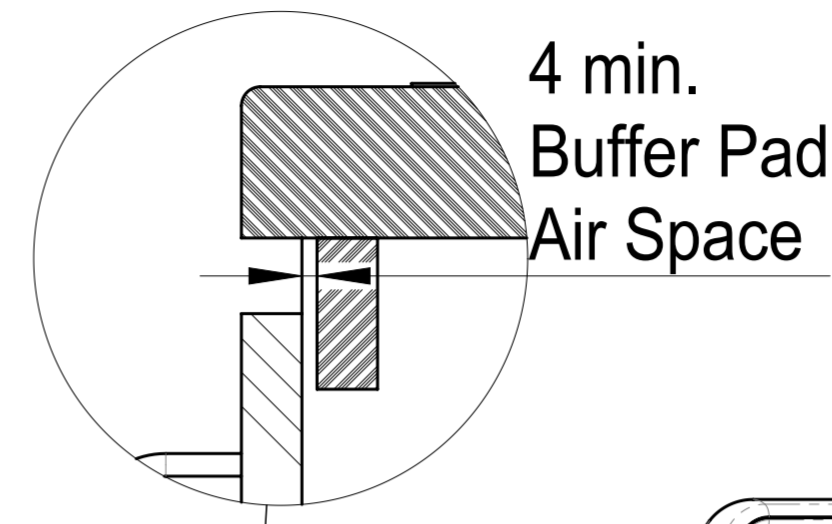
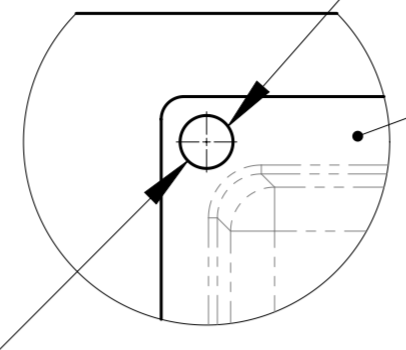
Sheet1 (Default)

Table - Zip BOM (Assembly)							
Item	Part	Rev	Description	Config	Status	Qty	Notes
1	5363AU	00	Hydrotap G4 AVS240/175 AIO Sparkling VENTED w/ Booster	5363AU-AVS240_175 VENTED	Design	1	
2	800220	C	Kickboard Fan Grill	Default	Production	1	
3	800221	C	Air Inlet Grill CFF	Default	Production	1	
9	27200	A	Zip Hydrotap Booster MBX2 2.2KW 10A 230V	Default	Production	1	
19	802240	00	AIO Sparkling Tap G4 Assy (Vented)	Default	Design	1	
20	85193	B	Assy - Restrict-A-Flow with ø2.5 Hole	87722	Production	1	
28	93179	00	Kit Gas Cylinder 2640g (4L)	Default	Design	1	

Position the Tap such that it dispenses into the sink bowl with ample clearance for a cup or a tea pot.

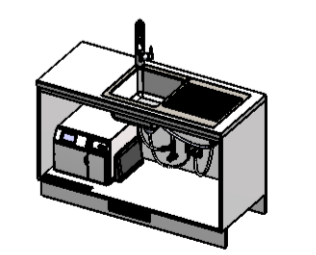
Sink shown only

Ø 50 Hole HydroTap®
 AIO Sparkling Tap

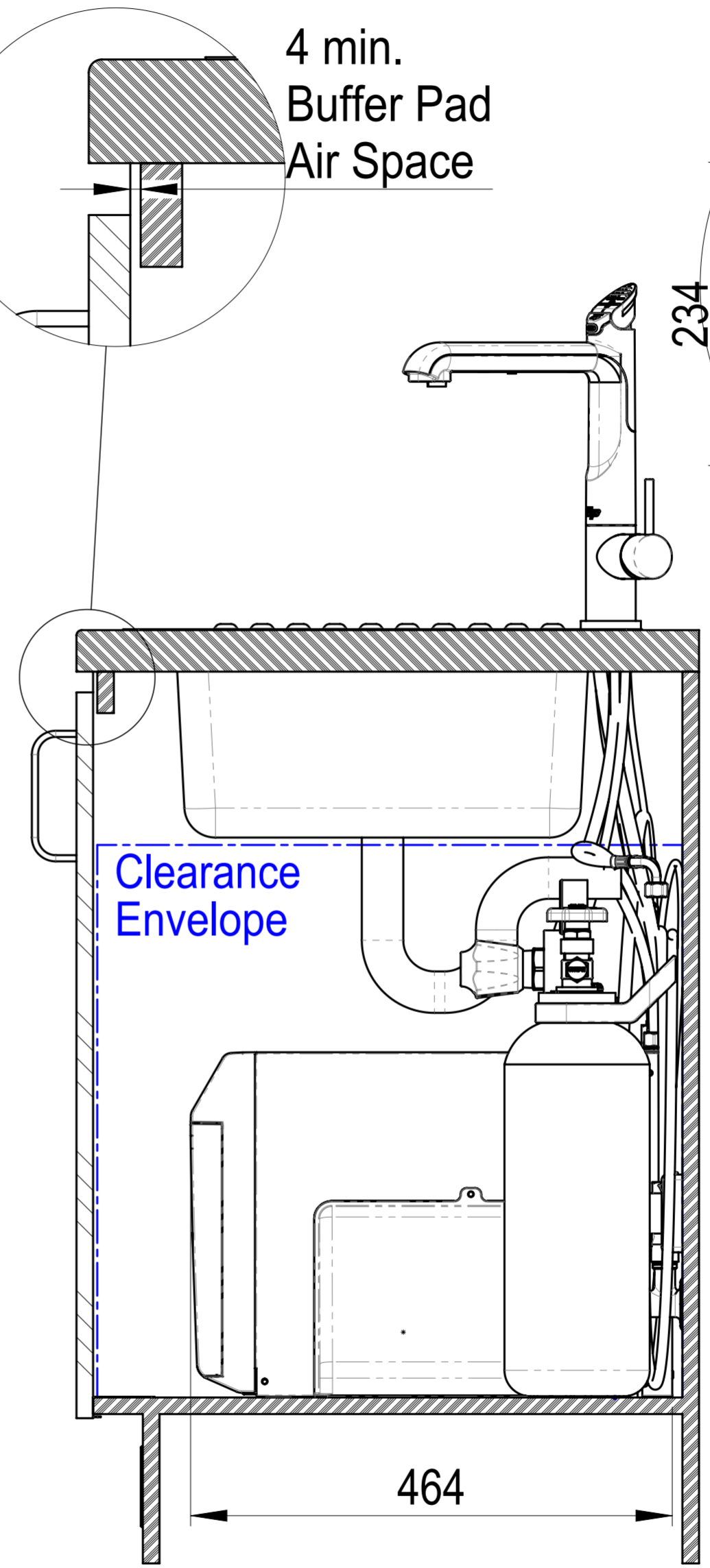
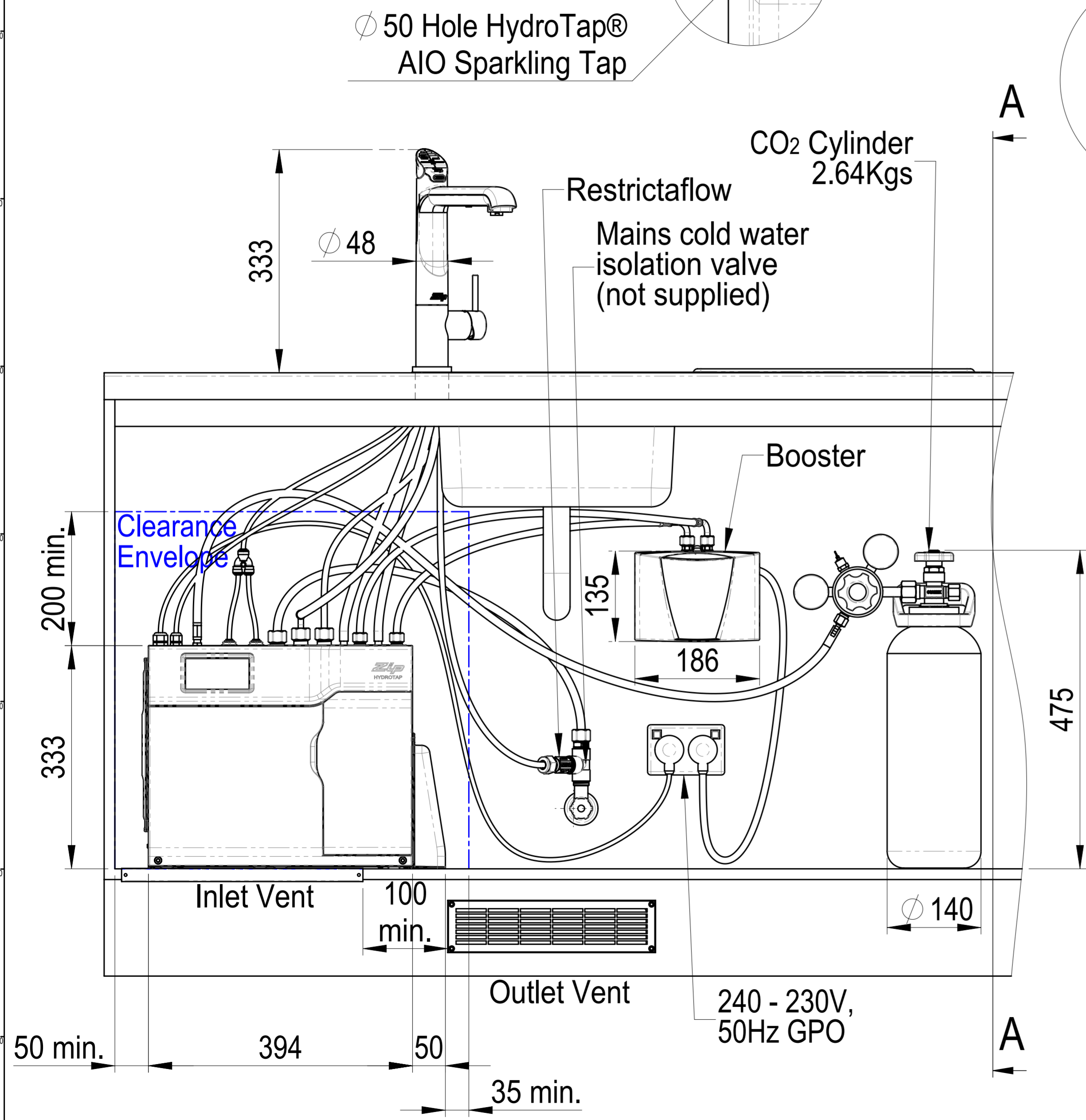


DETAIL FONT
 SCALE 1 : 4

SECTION A-A
 SCALE 1 : 5



Configuration : Default



WMKA 00099; CS8328
 Watermark Exp: 26-10-2017; CS Exp: 18-8-2014

This drawing is CONFIDENTIAL and is supplied on the express condition that it shall not be LOANED, COPIED or DISCLOSED to any other third party or used for any purpose without the written consent of Zip Industries Pty Ltd. If this document is printed in hardcopy form, it is for INFORMATION ONLY and therefore not subject to updating controls. For the current revision ALWAYS refer to the NATIVE electronic form as stated in the top left-hand corner of this sheet. © copyright Zip Industries Pty Ltd, 16/05/2011

Manufacturing Instructions		Approved by: Unapproved on 1/03/2011	Description: All-in-One Sparkling BCSHA 240/175 G4 Vented with Booster	
Make or Buy: Buy	Checked by: Unchecked on 1/01/2001	Updated by: edgarg on 3/10/2014 7:29:23 AM	Project: Hydrotap G48	Configuration: Default
Raw material: See Components	Material: See Components	Model: KL002_5363AU0A6ZN1C	Created by & on: Edgarg on 4/05/2011	Rev: 01
Remove all sharp edges. This drawing ONLY details information which cannot be ascertained from the 2D geometry of the part(s) attached. Model & dimensions are AFTER all finishing operations.	Finish: Finish	Drawing: KL002_5363AU0A6ZN1C	Created by & on: Edgarg on 16/05/2011	Size: A2
Volume (mm ³): 85305.6	Area (mm ²): 143980.4	Derived from: New	Colour: Colourless	Status: Production
Mass (kg): 98033.5	Density (g/mm ³): 1.1	Scale: 1:1	Sheet: 1 of 1	Custom Property