

Table - Zip BOM (Assembly + Make/Buy)									
Item	Part	Rev	Description	Status	Qty	Make or Buy?			
3	800221	C	Air Inlet Grill CFF	Production	1	Make			
5	27200	A	Zip HydroTap Booster MBX2 2.2kW 10A 230V	Production	1	Buy			
7	84451	A	Tee 1/2" BSP Female (Brass)	Production	1	Buy			
8	87722	B	Assy - Restrict-A-Flow with ø2.5 Hole	Production	1	Buy			
9	802433	00	HydroTap Arc Tap	Design	1	Buy			
11	5300AU	01	HydroTap G4 BHA240 3in1 with Booster	Prototype	1	Buy			
21	802628	00	Description (Config)	Design	1	Buy			

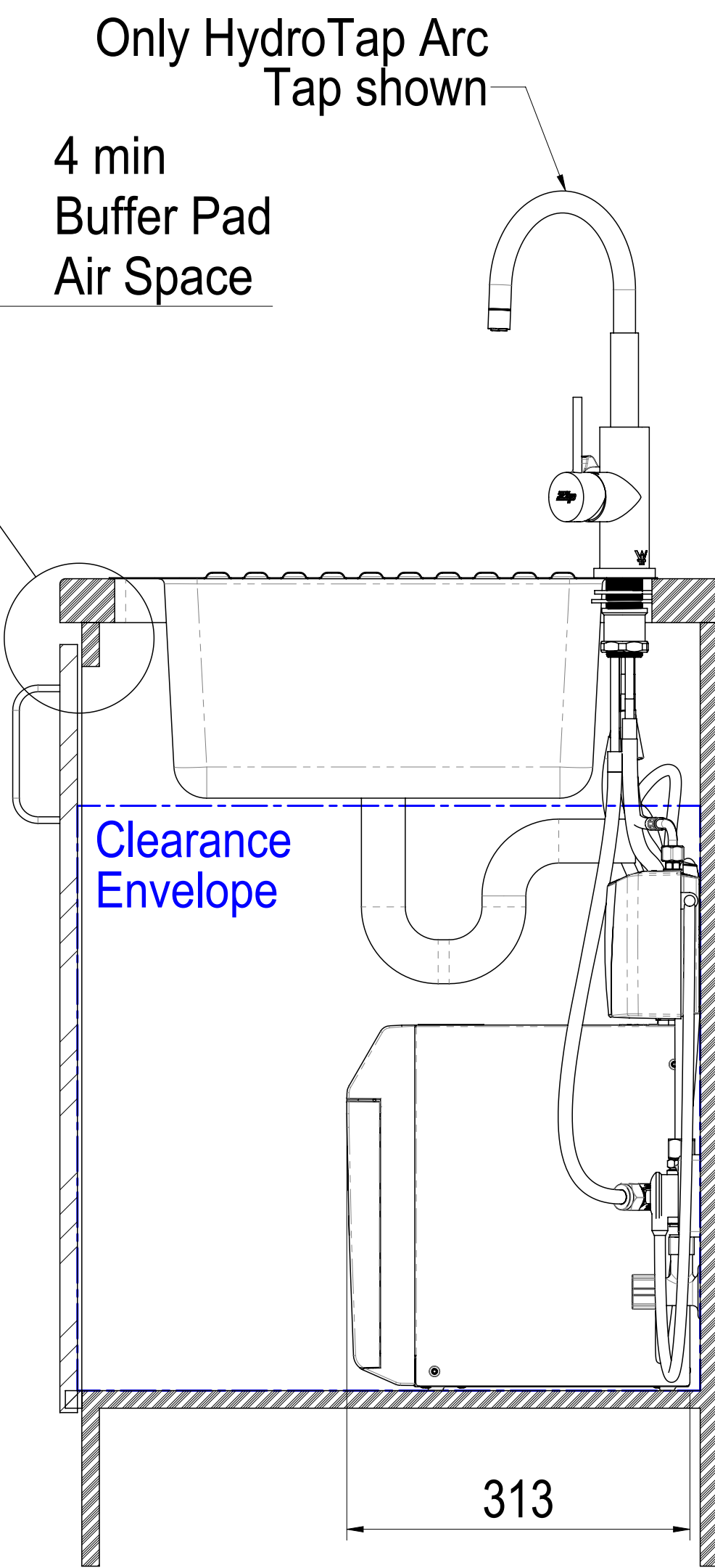
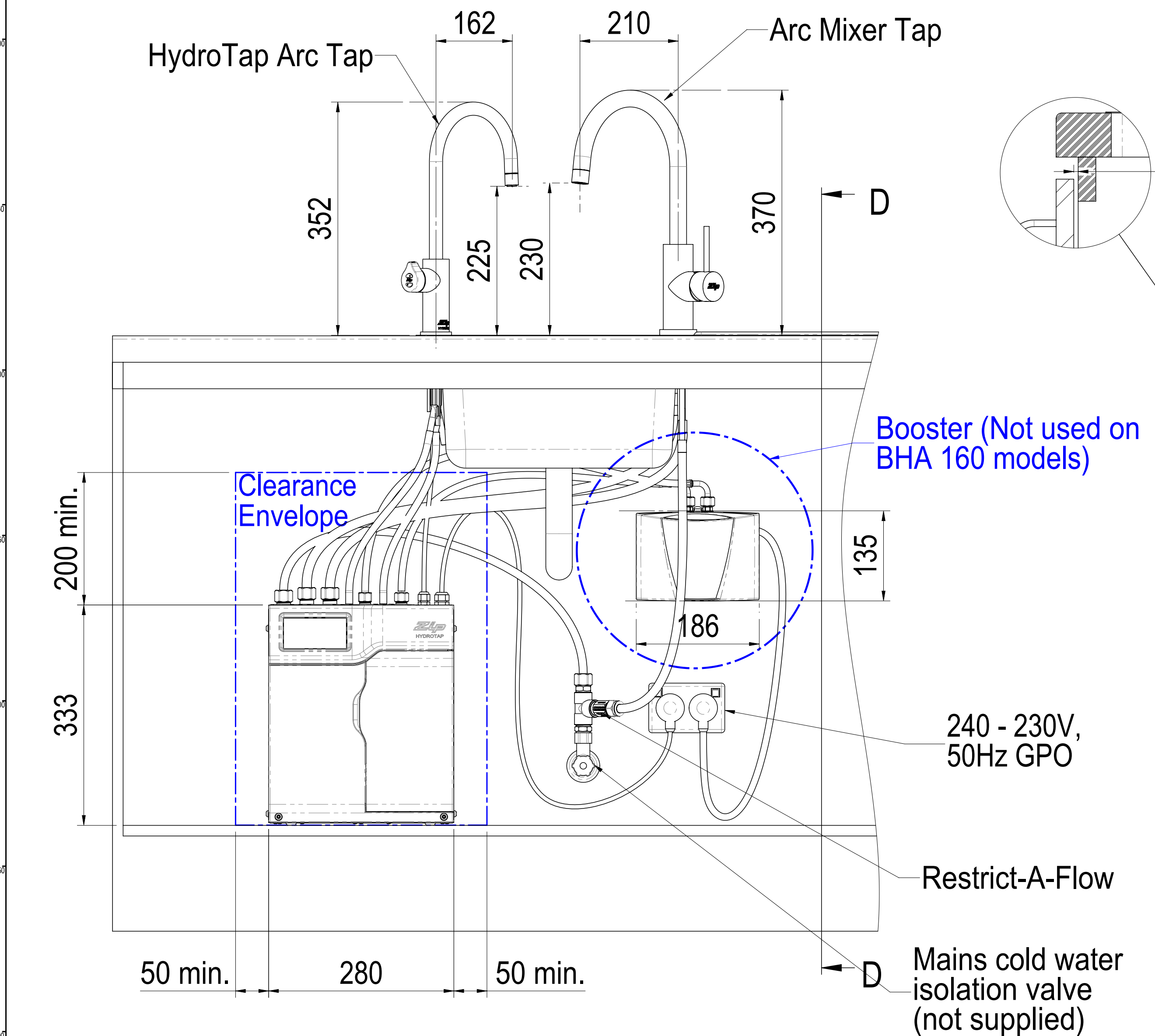
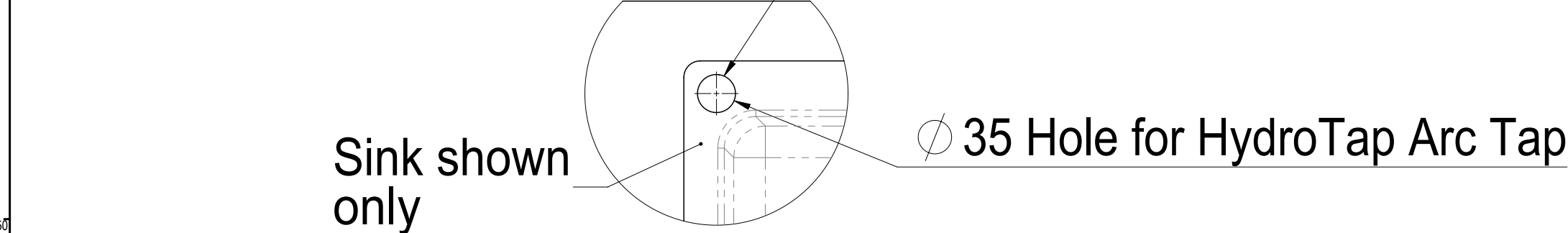


THIRD ANGLE
PROJECTION

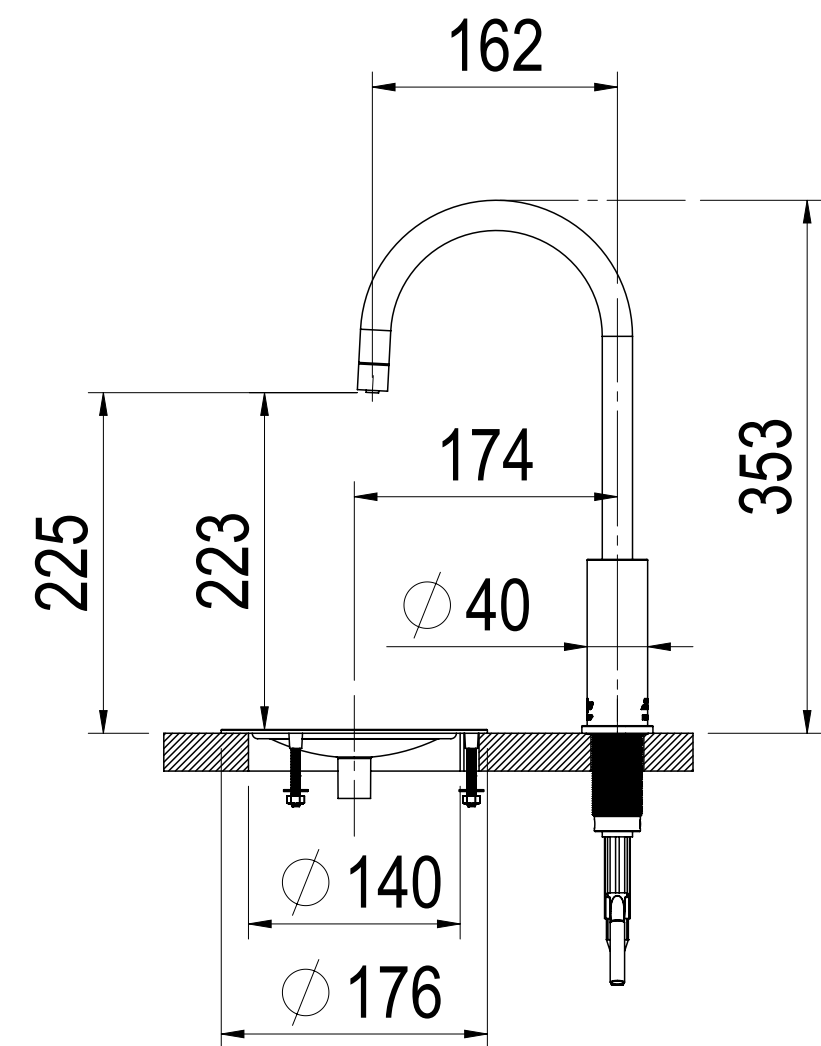
Dimensions in
millimetres
Drawing to
BS8888:2004
Screw threads to
BS 8369:2000

Zip Industries Pty Ltd
67 Allingham Street
Covadonga Park
Sydney
NSW 2200
Australia
Web: www.zipindustries.com
Email: sales@zipindustries.com

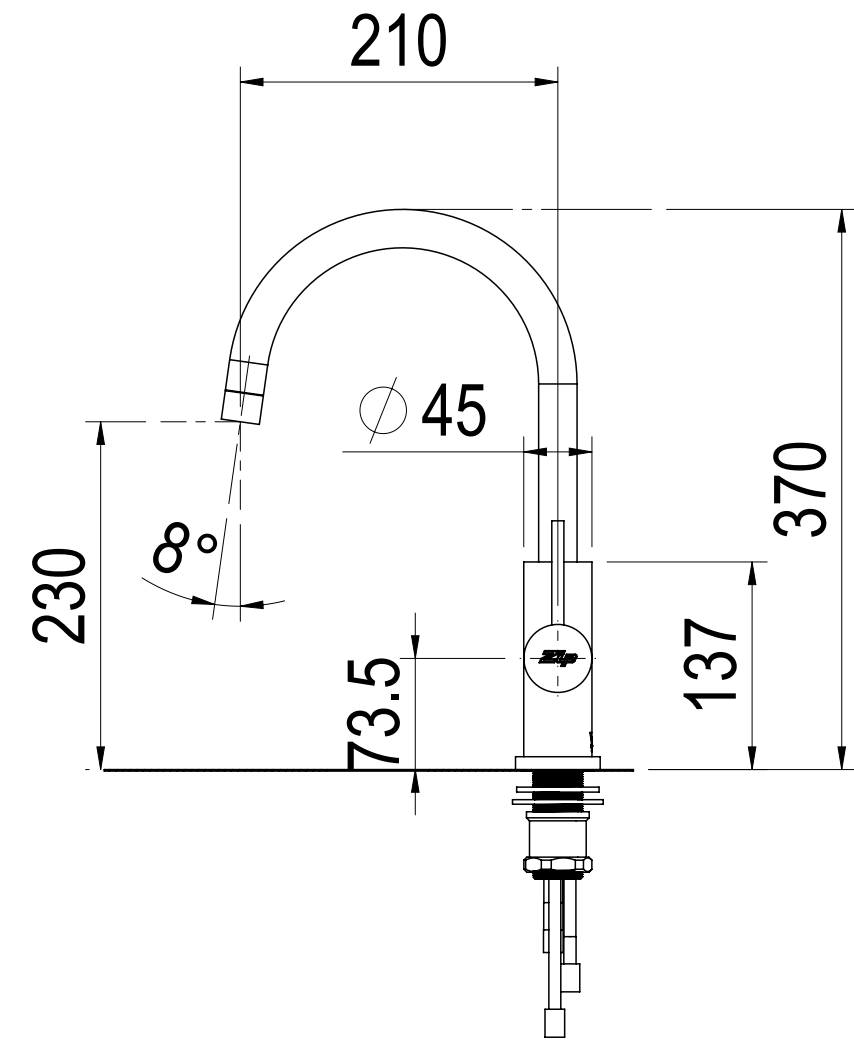
Position the Tap such that it dispenses into the sink bowl with ample clearance for a cup or a tea pot.
Alternatively, the Tap could be mounted away from the sink using a Zip Font available as an accessory.



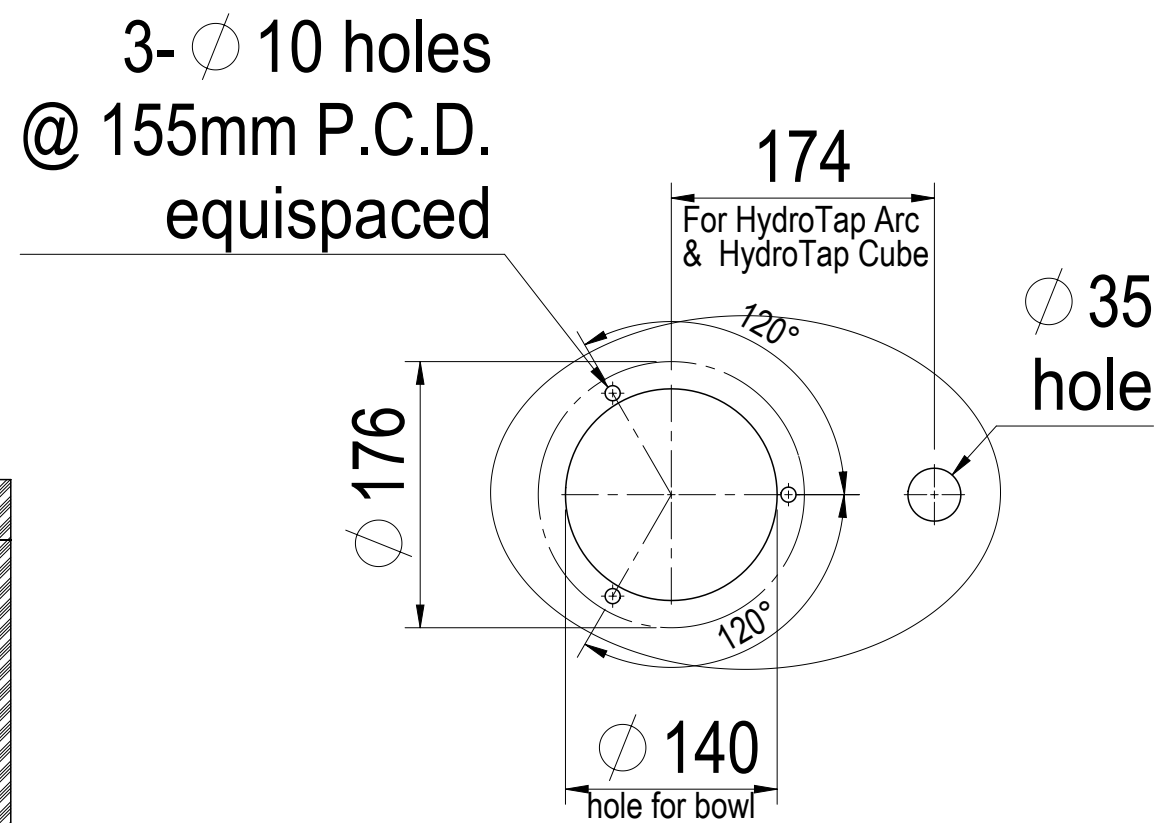
SECTION D-D
SCALE 1 : 5



HydroTap Arc with Font

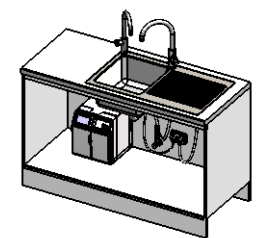


Arc Mixer Tap
Provide ø35mm hole on sink



Cutting Detail for
HydroTap Arc with Font

This set-up is applicable to:
3in1 BHA160 (Excluding Booster)
HT2737: 5200AU0T0AN1C w/ HydroTap Arc Tap + Arc Mixer Tap
3in1 BHA240 (With Booster)
HT2738: 5300AU0T0AN1C w/ HydroTap Arc Tap + Arc Mixer Tap



Configuration : Default

This drawing is CONFIDENTIAL and is supplied on the express condition that it will not be LOANED, COPIED or DISCLOSED to any other third party or used for any purpose without the written consent of Zip Industries Pty Ltd. This document is printed in hardcopy form. It is for INFORMATION ONLY and therefore not subject to updating controls.
For the correct revision ALWAYS refer to the MATING electronic form as stated in the top left hand corner of this sheet.
© copyright Zip Industries Pty Ltd. 29542015

Zip Industries **Zip**

Manufacturing Instructions				Description			
Make or Buy: Buy	Approved by: edgar on 23/07/2015	Checked by: edgar on 23/07/2015		Assy - Kitchen Layout (HydroTap G4 BHA240 Unit & HydroTap Arc Tap + 3in1 Arc Mixer Tap with Booster)			
Manufacturing Route: Manufacturing Process	Updated by: edgar on 23/07/2015 2:34:40 PM	Material: See Components		Project: HydroTap G4B			
Raw material: See Components	Remove all sharp edges. This drawing ONLY details information which cannot be ascertained from the 3D geometry of the part(s) attached. Model & dimensions are AFTER all finishing operations.	Finish: Finish		Model: KL002_5300AU0T0AN1C		Created by & on: EdgarG on 4/05/2011	
Comments:		Volume (mm3): 64610.3		Area (mm2): 149271.0		Derived from: New	
Mass (g): 98461.2		Density (g/mm3): 1.2		Scale: 1:1		Sheet: 1 of 1	
Position: NO	Recyclable: NO	Handled: NO	Status: Prototype		Drawing Property: Config		Rev: 01
						Size: A1	