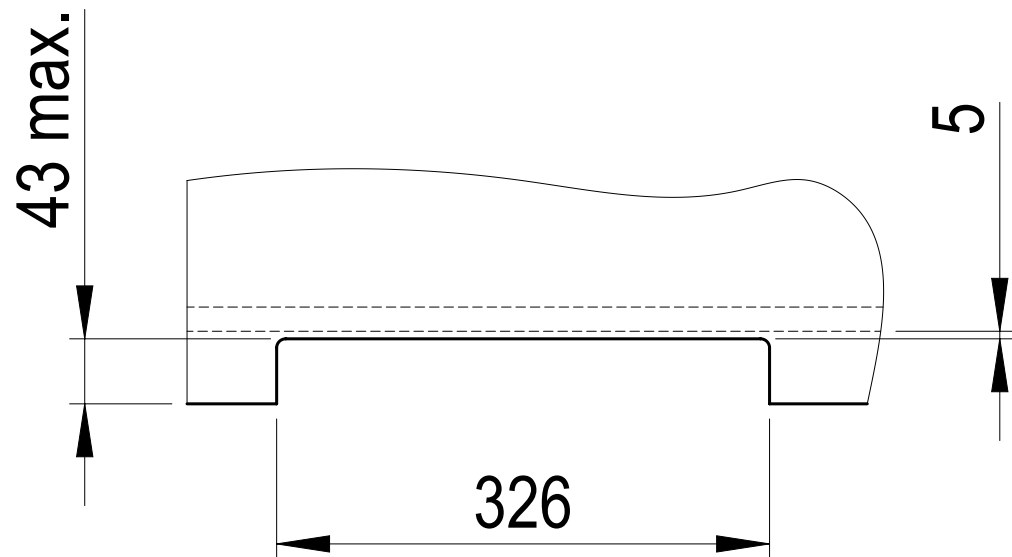
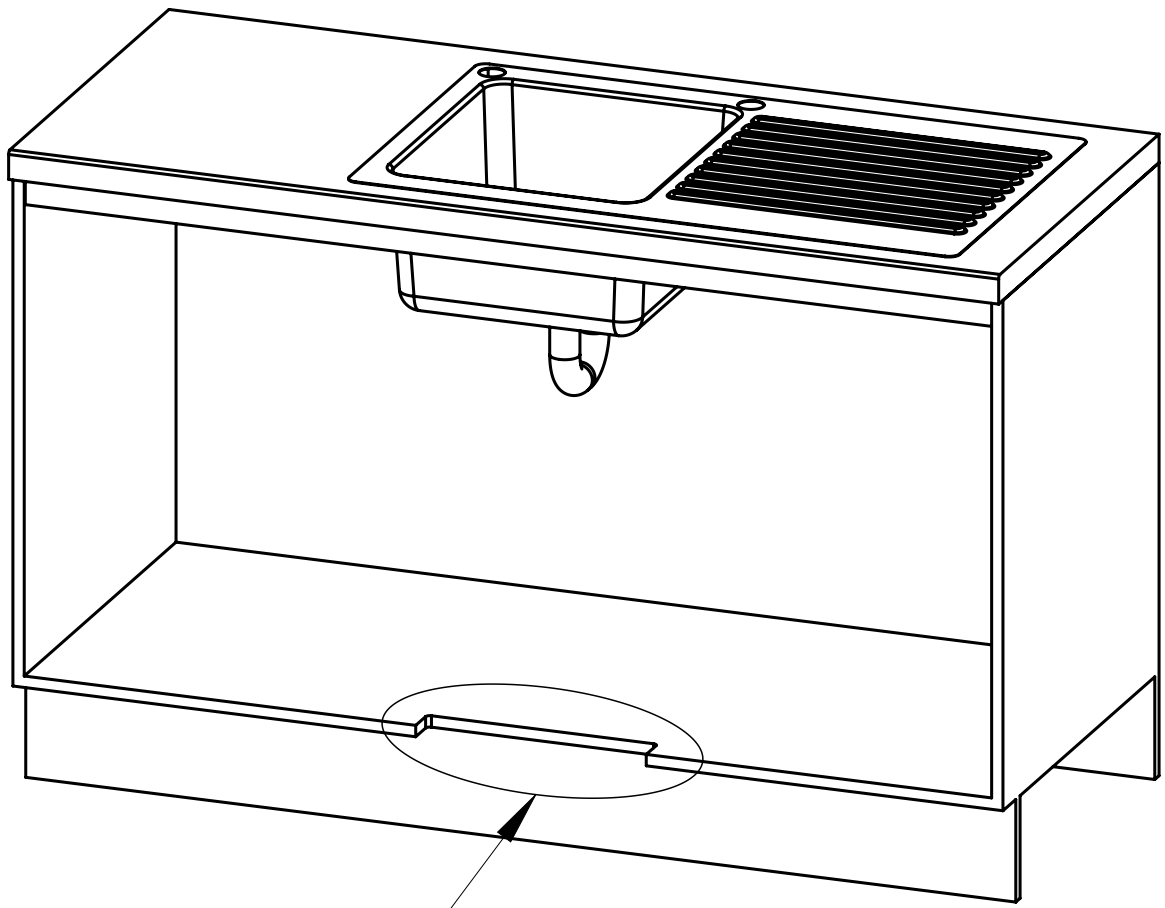


Table - Zip BOM (Assembly)				
Item	Part	Rev	Description	Qty
1	80544-B	A	Assy - Tap (G4) Boiling Only	1
2	86451	A	Nipple Tapered 1/2" (No 27)	2
3	5300AU	01	HydroTap G4 BH2420 Boiling Only 3in1 with Booster	1
9	27200	A	230V HydroTap Booster MBX2 2.2kW 10A 230V	1
13	84451	A	Tap 1/2" BSP Female (Brass)	1
19	85193	B	Assy - Restrict-A-Flow with ø2.5 Hole	1
21	80202B	00	Description (Config)	1



DETAIL B: Cabinet Floor Cut-Out

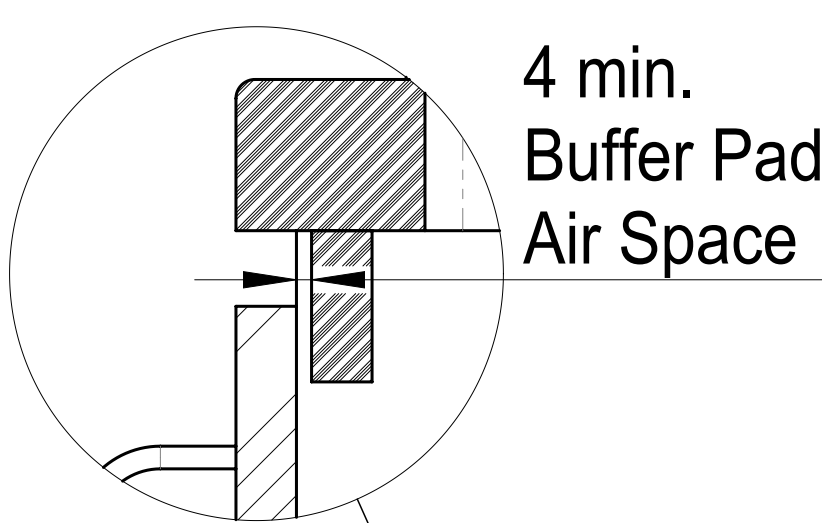
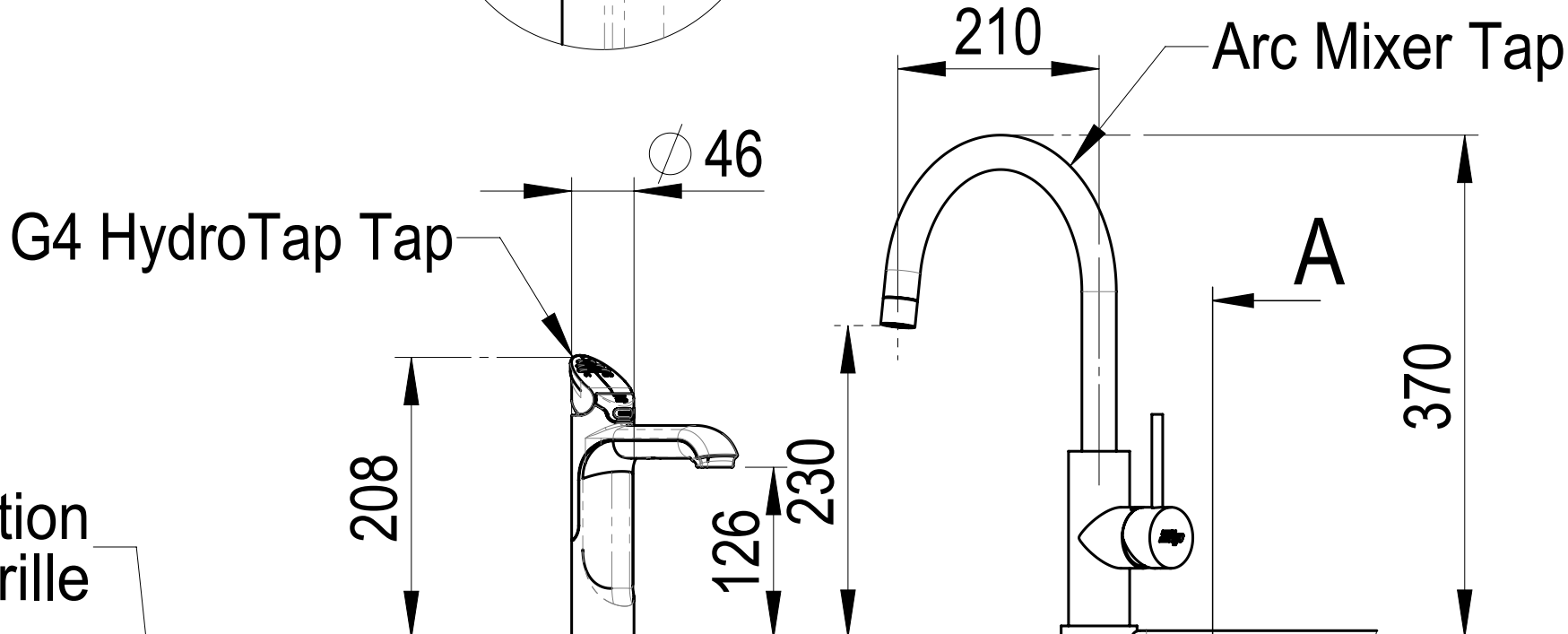
See Detail B

Ventilation Details

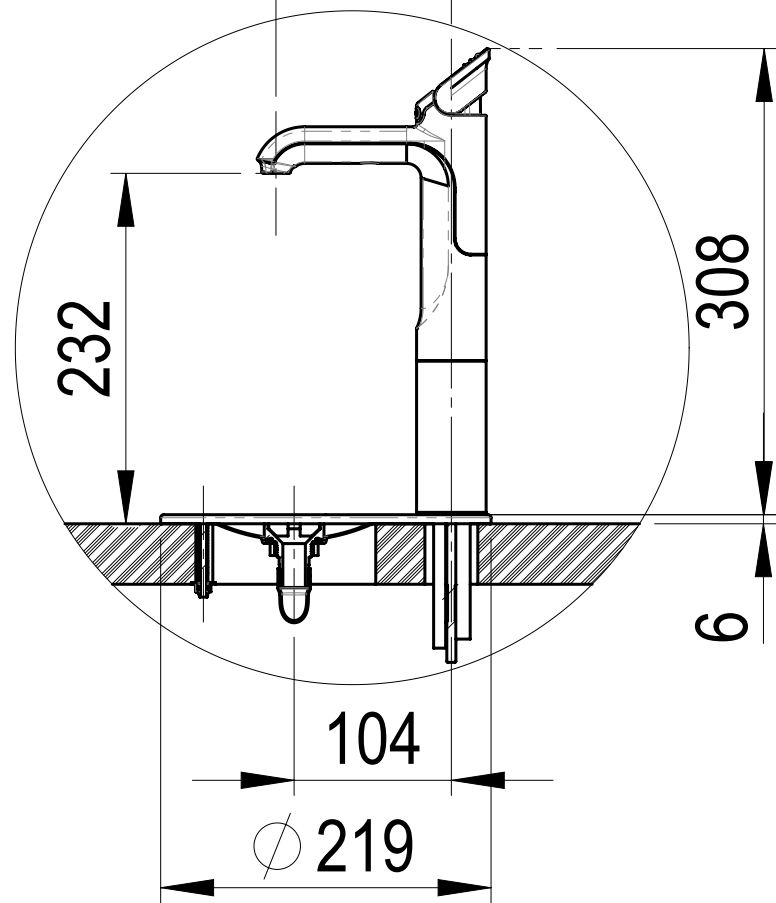
Position the Tap such that it dispenses into the sink bowl with ample clearance for a cup or a tea pot. Alternatively, the Tap could be mounted away from the sink using a Zip Font available as an accessory.

Ø 35 Hole
G4 HydroTap® Tap

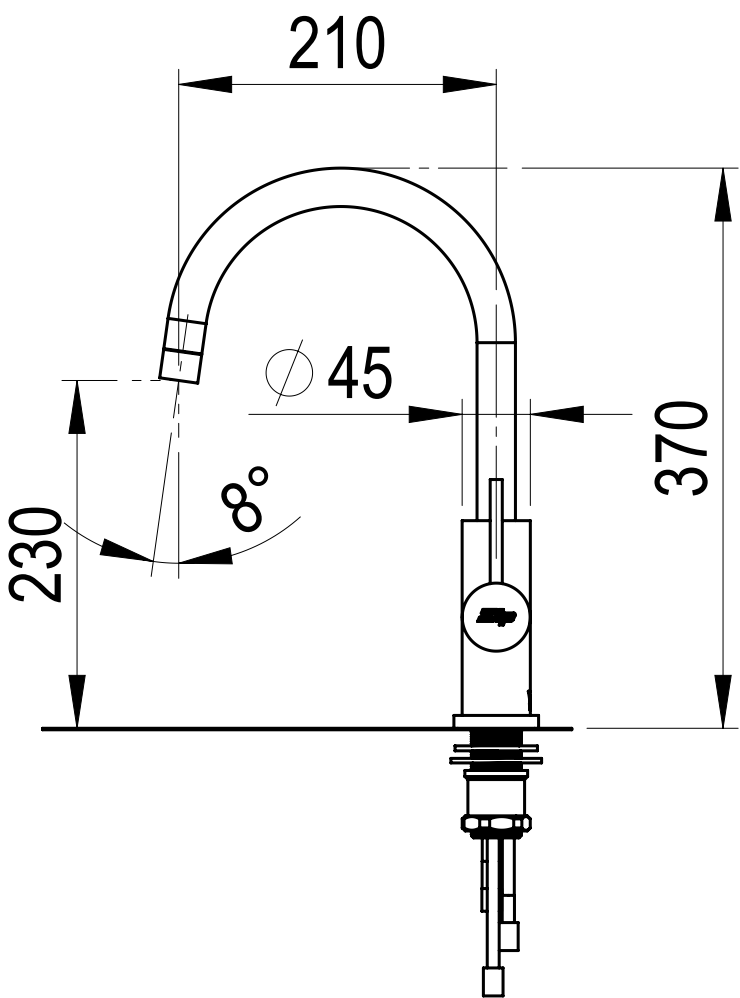
Sink shown
only



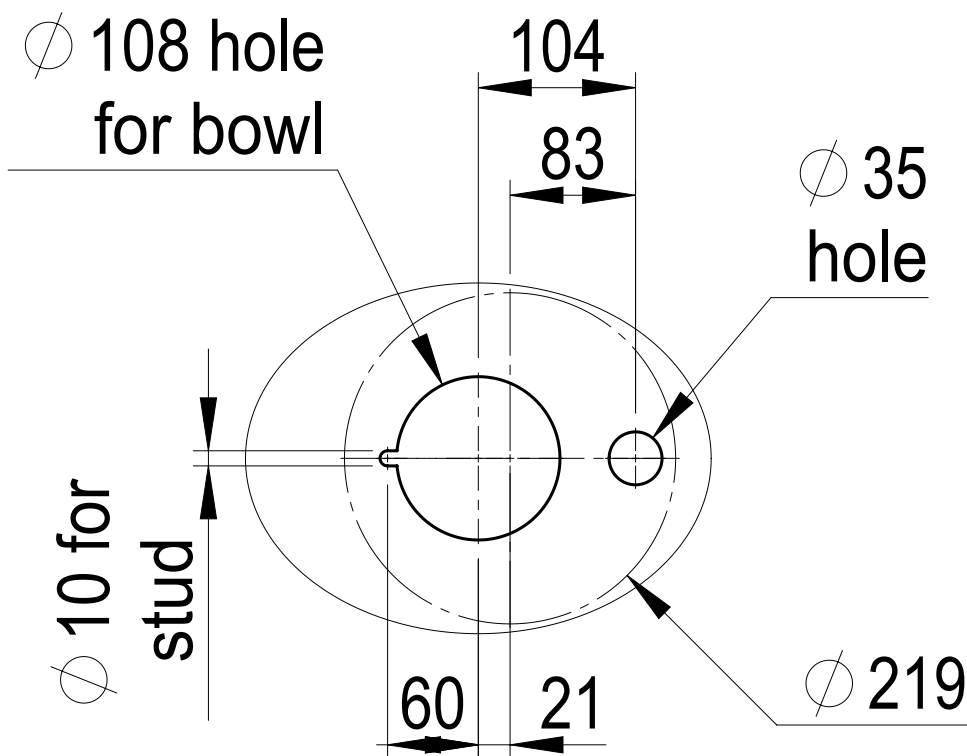
116 CL reach



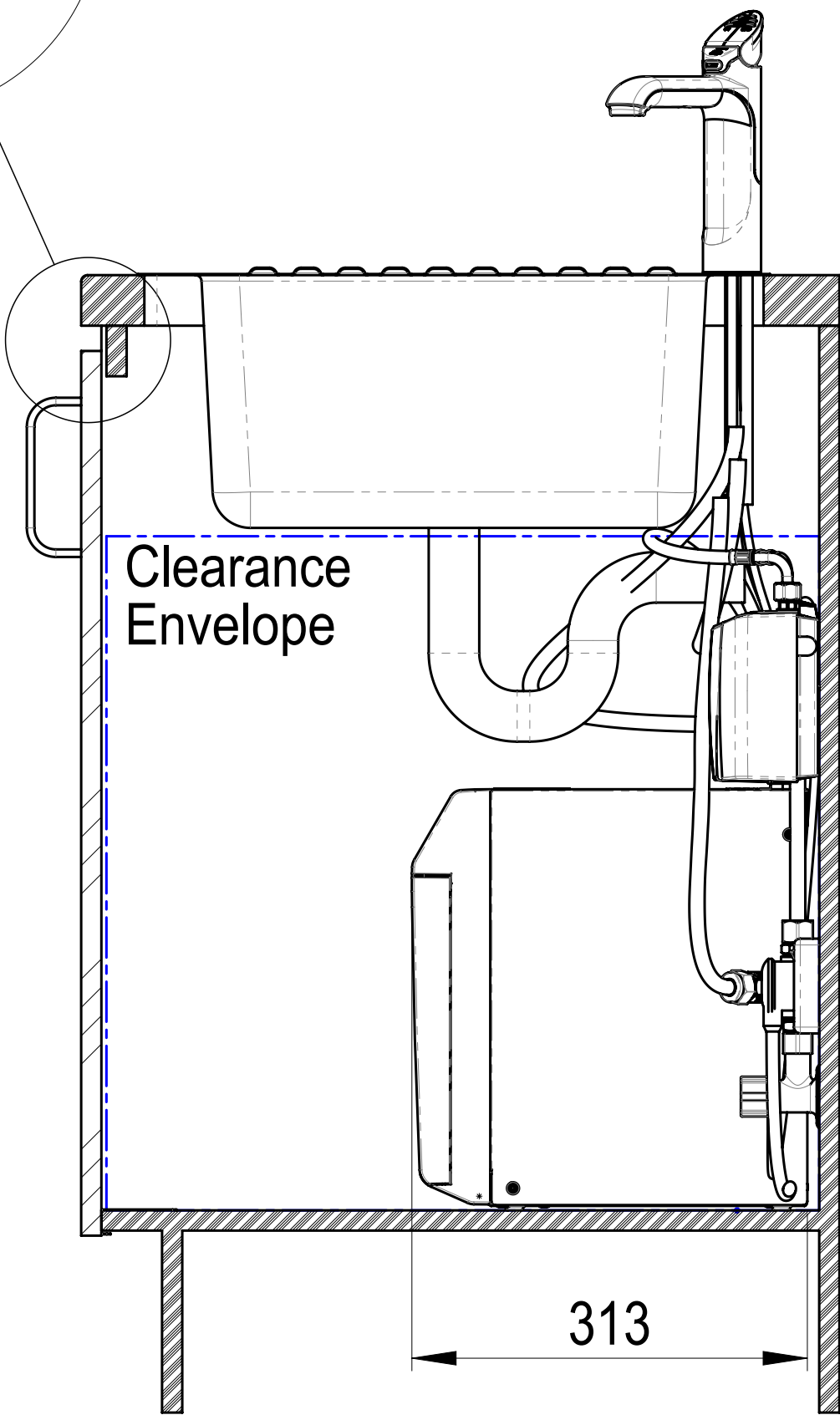
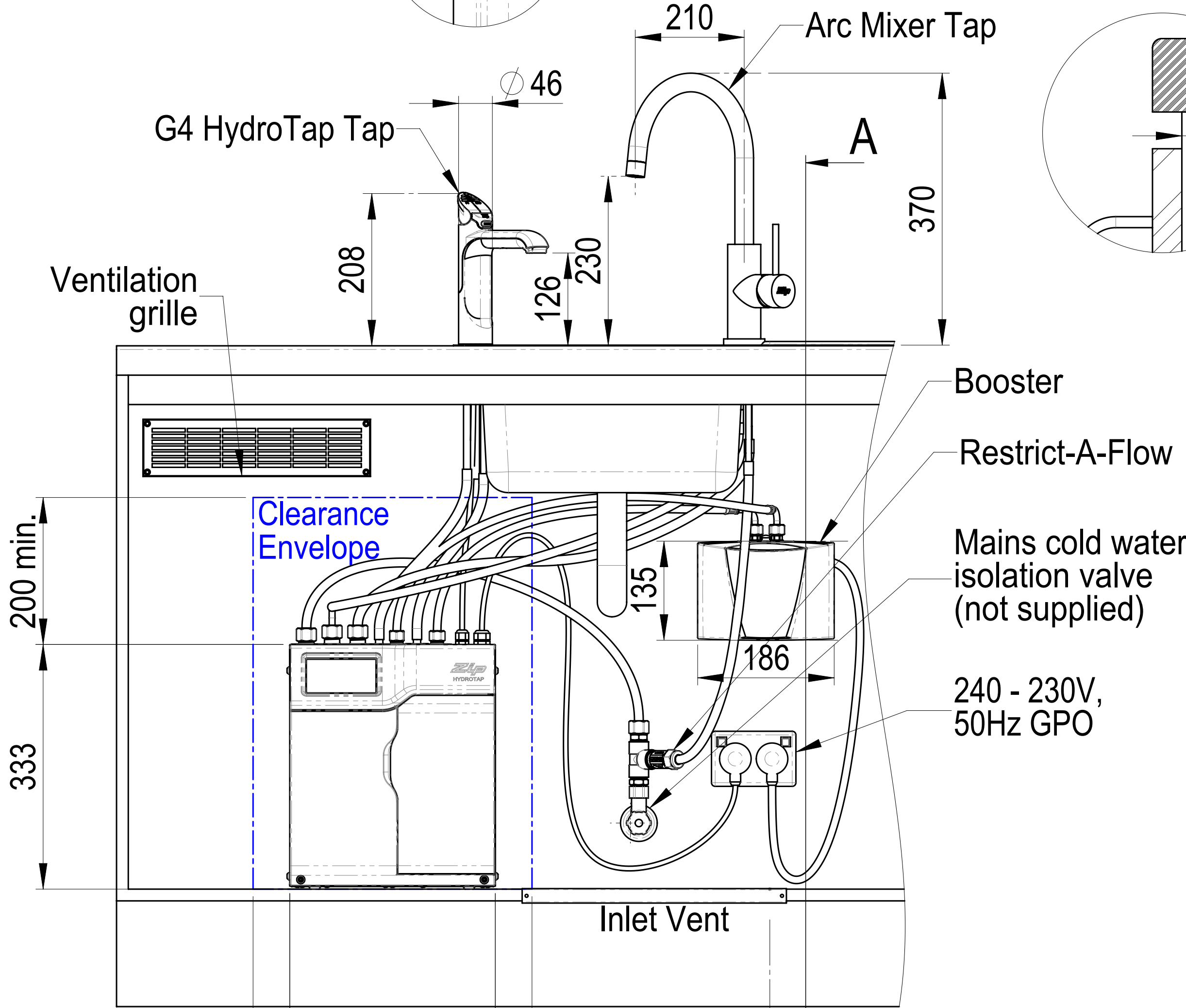
G4 HydroTap Tap on Font



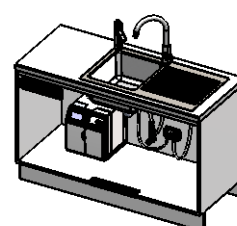
Arc Mixer Tap
Provide ø35mm hole for Mixer Tap



Cutting Detail for
G4 HydroTap Tap with Font



SECTION A-A
SCALE 1 : 5



Configuration : Default

This drawing is CONFIDENTIAL and is supplied on the express condition that it will not be LOANED, COPIED or DISCLOSED to any other third party or used for any purpose without the written consent of Zip Industries Pty Ltd. This document is printed in hardcopy form. It is for INFORMATION ONLY and therefore not subject to updating controls. For the current revision ALWAYS refer to the MATRIC electronic form as stated in the top left hand corner of this sheet. © copyright Zip Industries Pty Ltd. 16/05/2011				Zip Industries Zip			
Manufacturing Instructions				Description: Assy - Kitchen Layout (HydroTap G4 3in1 BH2420 Unit & G4 HydroTap Tap+Arc Mixer Tap+Booster)			
Make or Buy: Buy	Checked by: ricm on 11/11/2014	Approved by: ricm on 11/11/2014	Model: KL002_5300AU0H2AN1C	Configuration: Default	Created by & on: EdgicG on 4/05/2011	Rev: 01	Size: A1
Manufacturing Route: Manufacturing Process	Updated by: edgic on 22/07/2015 3:21:58 PM	Material: See Components	Project: HydroTap G4B	Configuration: Default	Created by & on: EdgicG on 4/05/2011	Rev: 01	Size: A1
Raw material: See Components	Material: See Components	Finish: Finish	Model: KL002_5300AU0H2AN1C	Configuration: Default	Created by & on: EdgicG on 4/05/2011	Rev: 01	Size: A1
Remove all sharp edges. This drawing ONLY details information which cannot be ascertained from the 3D geometry of the part(s) attached. Model & dimensions are AFTER all finishing operations.	Comments: Comments	Volume (mm3): 63864.7	Area (mm2): 14508.2	Derived from: New	Colour: Colourless	Status: Prototype	Config: Property
Position: NO	Recyclable: NO	Hardened: NO	Mass (g): 96444.5	Density (g/mm3): 1.2	Scale: 1:1	Sheet: 1 of 1	Custom: Property