

Table - Zip BOM (Assembly + Make/Buy)						
Item	Part	Rev	Description	Status	Qty	Make or Buy?
5	27200	A	Zip Hydrotap Booster MBX2 2.2kW 10A 230V	Production	1	Buy
7	84451	A	Tea 1/2" BSP Female (Brass)	Production	1	Buy
9	87722	B	Assy - Restrict-A-Flow with ø2.5 Hole	Production	1	Buy
11	87576	00	Classic Mixer Tap	Design	1	Buy
12	5300AU	01	Hydrotap G4 BHA240 with Booster	Prototype	1	Buy
22	802940	00	Elite Tap Boiling Only	Design	1	Buy

Position the Tap such that it dispenses into the sink bowl with ample clearance for a cup or a tea pot. Alternatively, the Tap could be mounted away from the sink using a Zip Font available as an accessory.

Sink shown only

Ø 35 Hole for Elite Taps

Elite Tap

Classic Mixer Tap
(See other Mixer Tap options)

4 min.
Buffer Pad
Air Space

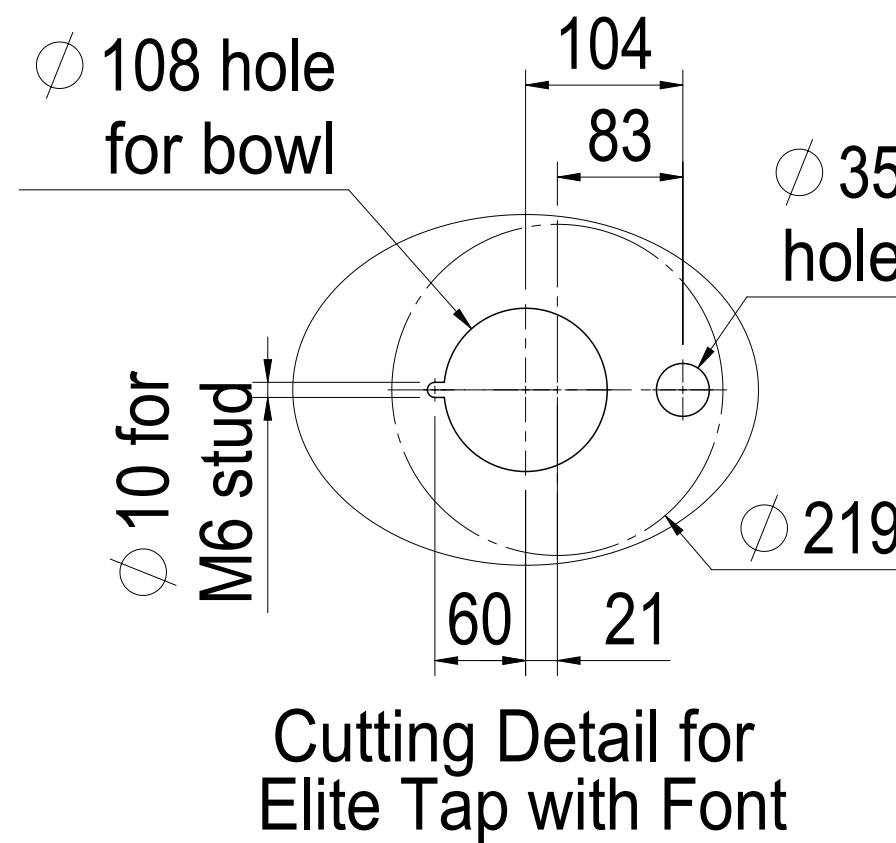
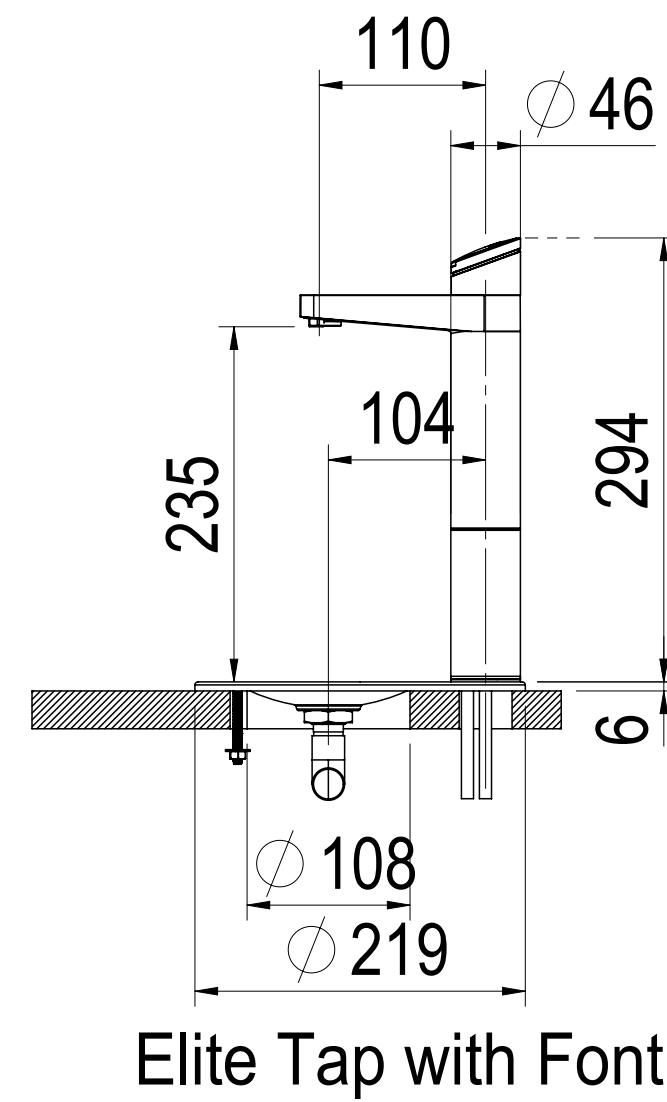
Booster
(Not used on
BHA 160
models)

240 - 230V,
50Hz GPO

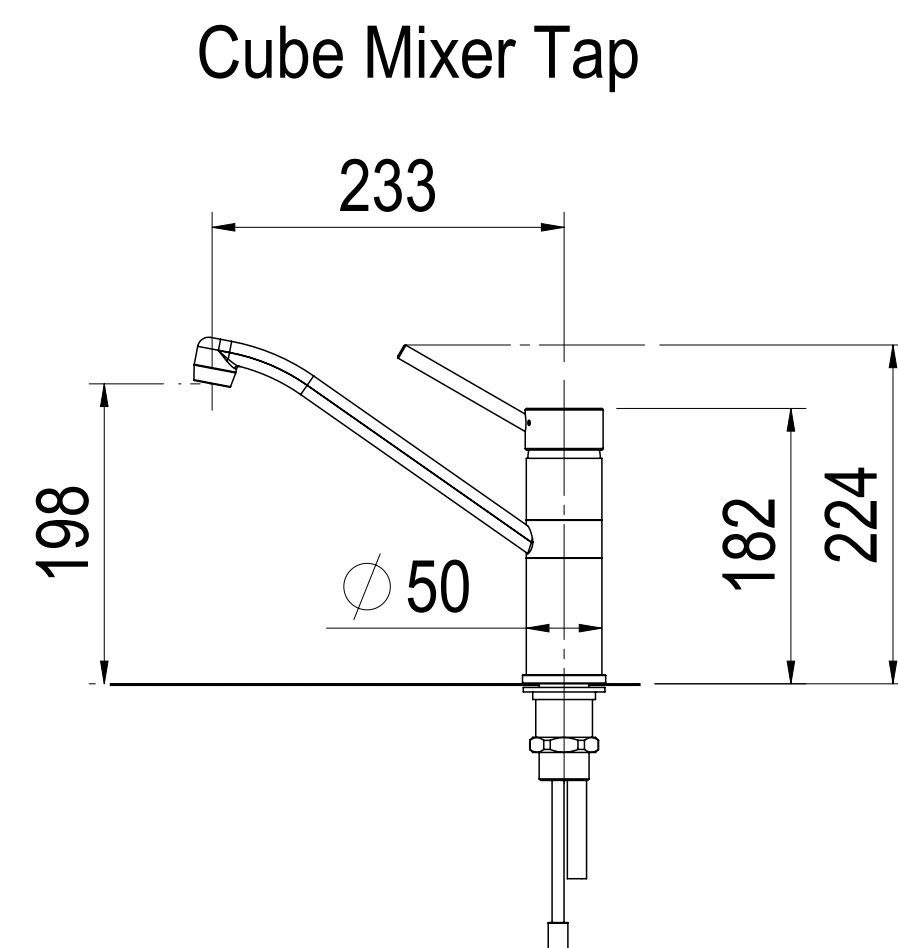
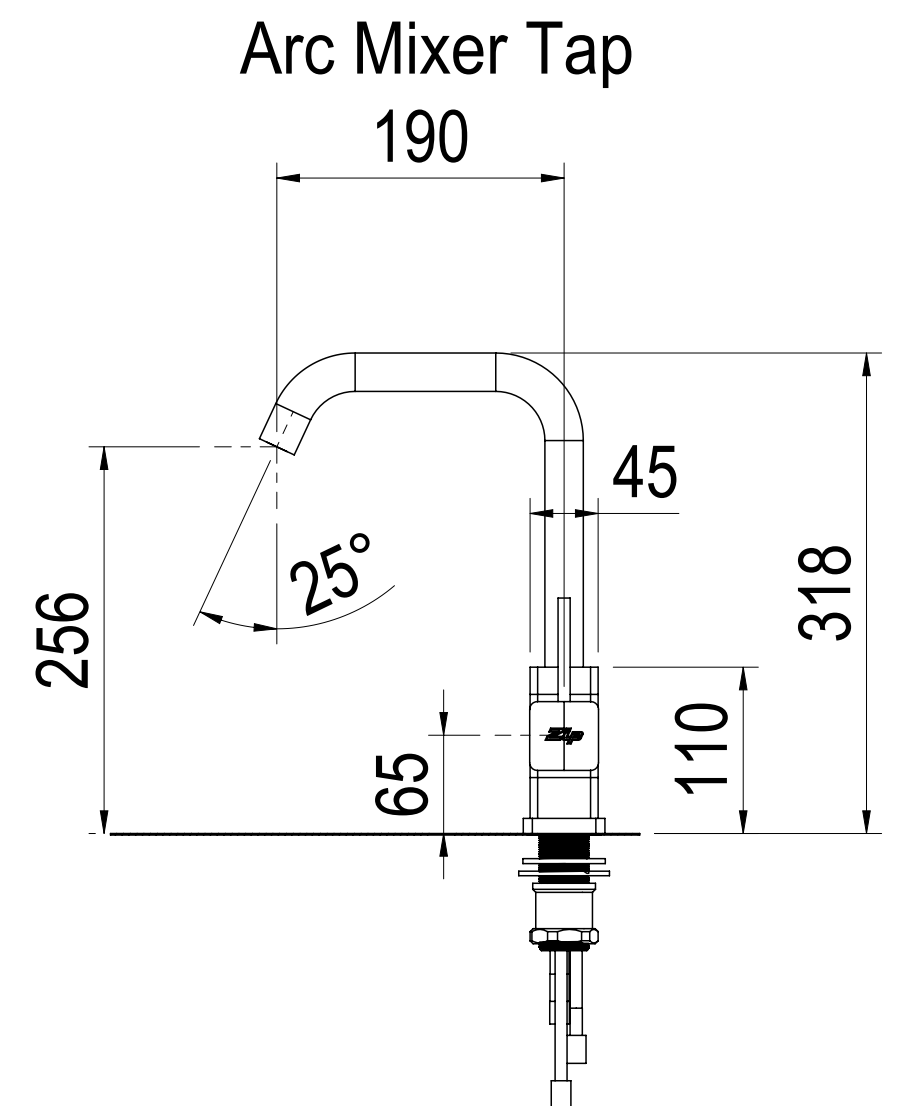
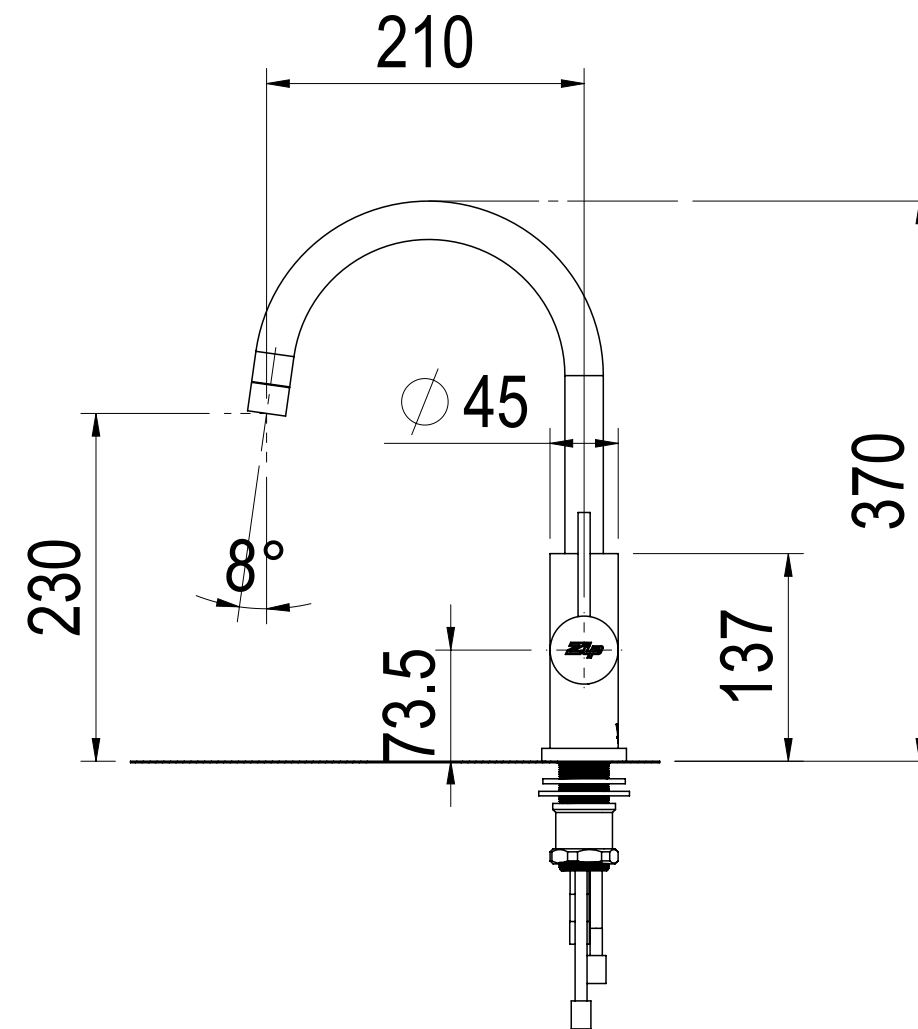
Restrict-A-Flow

Mains cold water
isolation valve
(not supplied)

SECTION D-D
SCALE 1 : 5

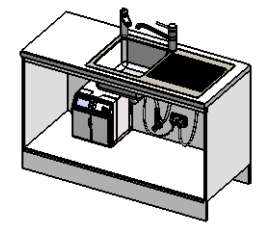


MIXER TAP OPTIONS
Provide ø35mm hole on sink



This set-up is applicable to:

3in1 BHA160 (Excluding Booster)
HT4737: 5200AU0E1CN1C w/ Elite Tap + Classic Mixer Tap
HT4237: 5200AU0E1AN1C w/ Elite Tap + Arc Mixer Tap
HT4337: 5200AU0E1UN1C w/ Elite Tap + Cube Mixer Tap
3in1 BHA240 (With Booster)
HT4738: 5300AU0E1CN1C w/ Elite Tap + Classic Mixer Tap
HT4238: 5300AU0E1AN1C w/ Elite Tap + Arc Mixer Tap
HT4338: 5300AU0E1UN1C w/ Elite Tap + Cube Mixer Tap



Configuration : Default