

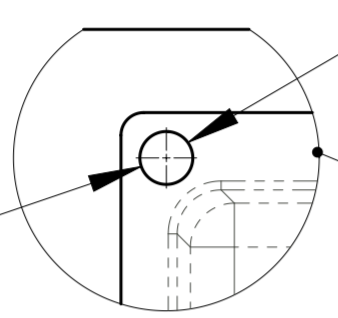
Table - Zip BOM (Assembly)

Item	Part	Rev	Description	Config	Status	Qty	Notes
1	A2402	A	Assy - Kitchen Cupboard (Generic)	LH & RH Taps	Production	1	
2	875701	A	Assy - Tap (4 in 1)	Hot Off	Production	1	
3	1001AU	A	Hydrotap MiniBoil Unit	Default	Production	1	
4	89586	A	Tap Assembly MiniBoil Classic	Default	Production	1	
5	86451	A	Nipple-Tapered 1/2" (No 27)	Default	Production	1	
6	87714	A	Apex FM (BPF) PLY 350kPa 1/2" BSP - 1/4" JG	Default	Production	1	
7	800426	A	Description (Assembly)	Default	Production	1	
8	800335	A	Filter Cartridge	800335	Production	1	

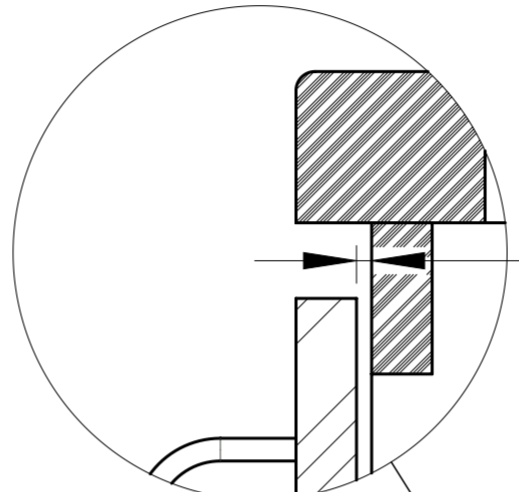
REVISIONS					
Rev	xxxx yyyy	Last Change(s)	ECO	Date	Init
A		First Issue	0000	8/06/2011	EVG
B		Annotation for positioning of Tap hole replaced the 80max/15min dimension.	0000	6/05/2013	EVG
C		Back of MiniBoil is now butted up against the rear wall of cupboard.	0000	20/05/2013	EVG

Position the Tap such that it dispenses into the sink bowl with ample clearance for a cup or a tea pot. Alternatively, the Tap could be mounted away from the sink using a Zip Font available as an accessory.

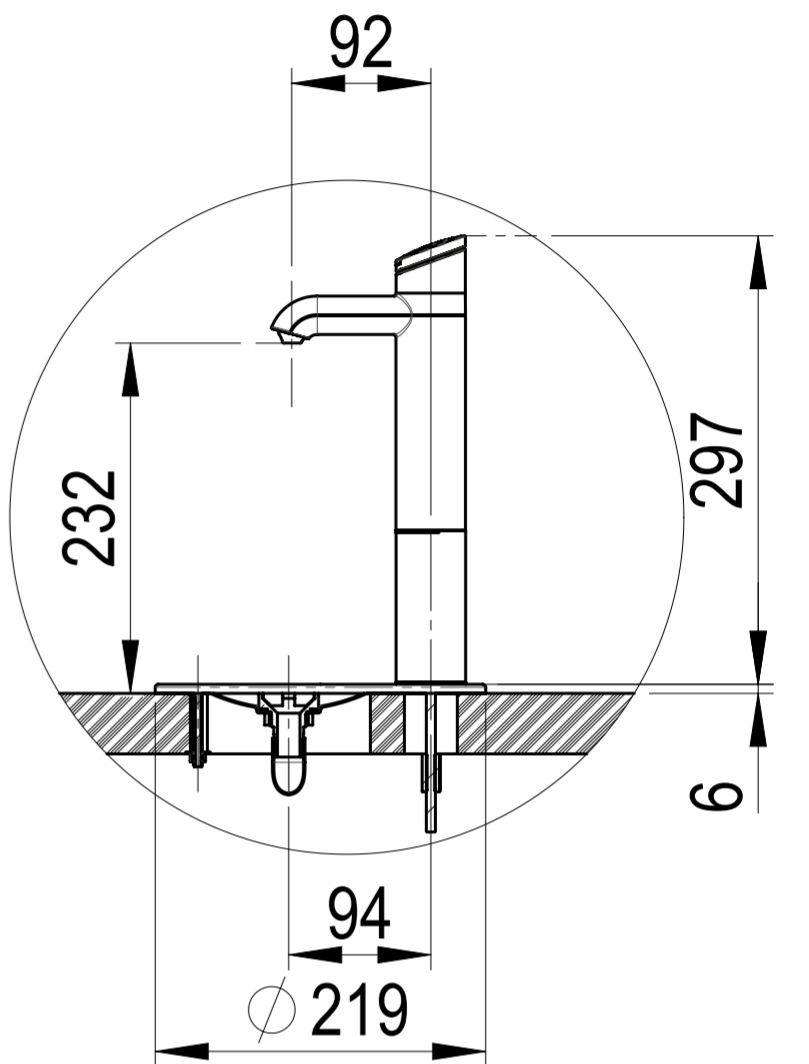
Ø 35 Hole
 HydroTap®
 MiniBoil Elite
 Tap



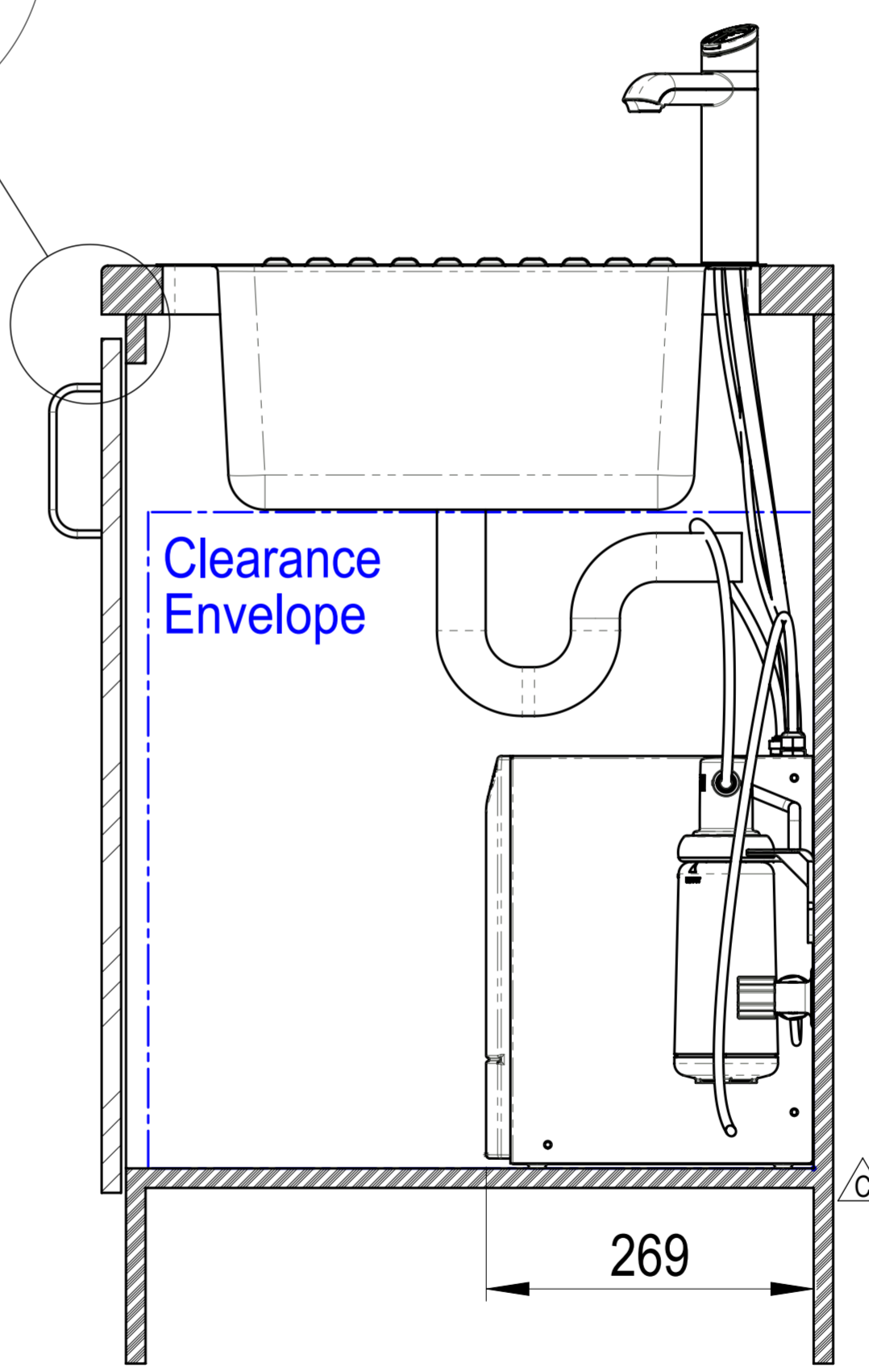
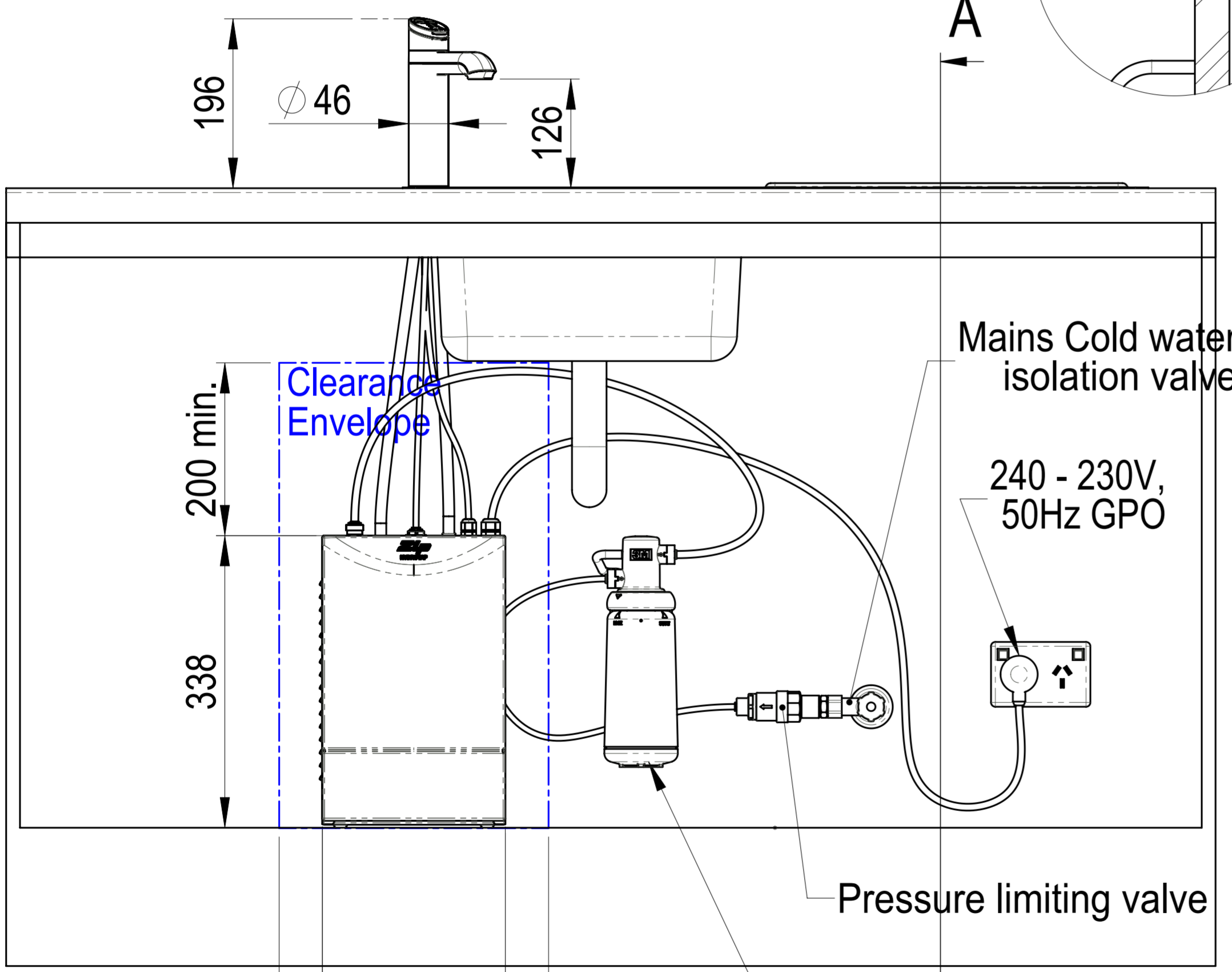
Sink shown only



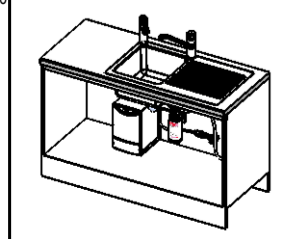
4 min.
 Buffer Pad
 Air Space



DETAIL FONT
 SCALE 1 : 5



SECTION A-A
 SCALE 1 : 5



Configuration : Default

ERROR! Approval Number
 ERROR! Approval Expiry Date

This drawing is CONFIDENTIAL and is supplied on the express condition that it shall not be LOANED, COPIED or DISCLOSED to any other third party or used for any purpose without the written consent of Zip Industries Pty Ltd. If this document is printed in hardcopy form, it is for INFORMATION ONLY and therefore not subject to updating controls. For the current revision ALWAYS refer to the NATIVE electronic form as stated in the top left-hand corner of this sheet. © copyright Zip Industries Pty Ltd, 16/05/2011		Zip Industries Zip	
Manufacturing Instructions		Approved by : Unapproved on 1/03/2011	
Make or Buy : Make		Checked by : Unchecked on 1/01/2001	
Manufacturing Route : Manufacturing Process		Updated by : edgar on 16/06/2014 1:29:58 PM	
Raw material : Raw Material		Material : Material <not specified>	
Remove all sharp edges. This drawing ONLY details information which cannot be ascertained from the 3D geometry of the parts attached. Model & dimensions are AFTER all finishing operations.		Project : Hydrotap MiniBoil Classic®	
Finish :		Model : KL002_39118	
Comments :		Configuration : Default	
Comments :		Created by & on : EdG on 4/05/2011	
Comments :		Drawing :	
Comments :		Drawing : KL002_39118	
Comments :		Created by & on : EdG on 16/05/2011	
Comments :		Rev : C	
Comments :		Status : Production	
Comments :		Size : A2	
Comments :		Colour : Colourless	
Comments :		Status : Production	
Comments :		Drawing Property	
Comments :		Part Property	
Comments :		Volume (mm³) : 84160.51	
Comments :		Area (mm²) : 125262.75	
Comments :		Derived from : New	
Comments :		Scale : 1:1	
Comments :		Sheet : 1 of 1	
Comments :		Density (g/mm³) : 92829.03	
Comments :		Handled? : ERROR!	
Comments :		Recyclable? : No	
Comments :		Potable? : No	