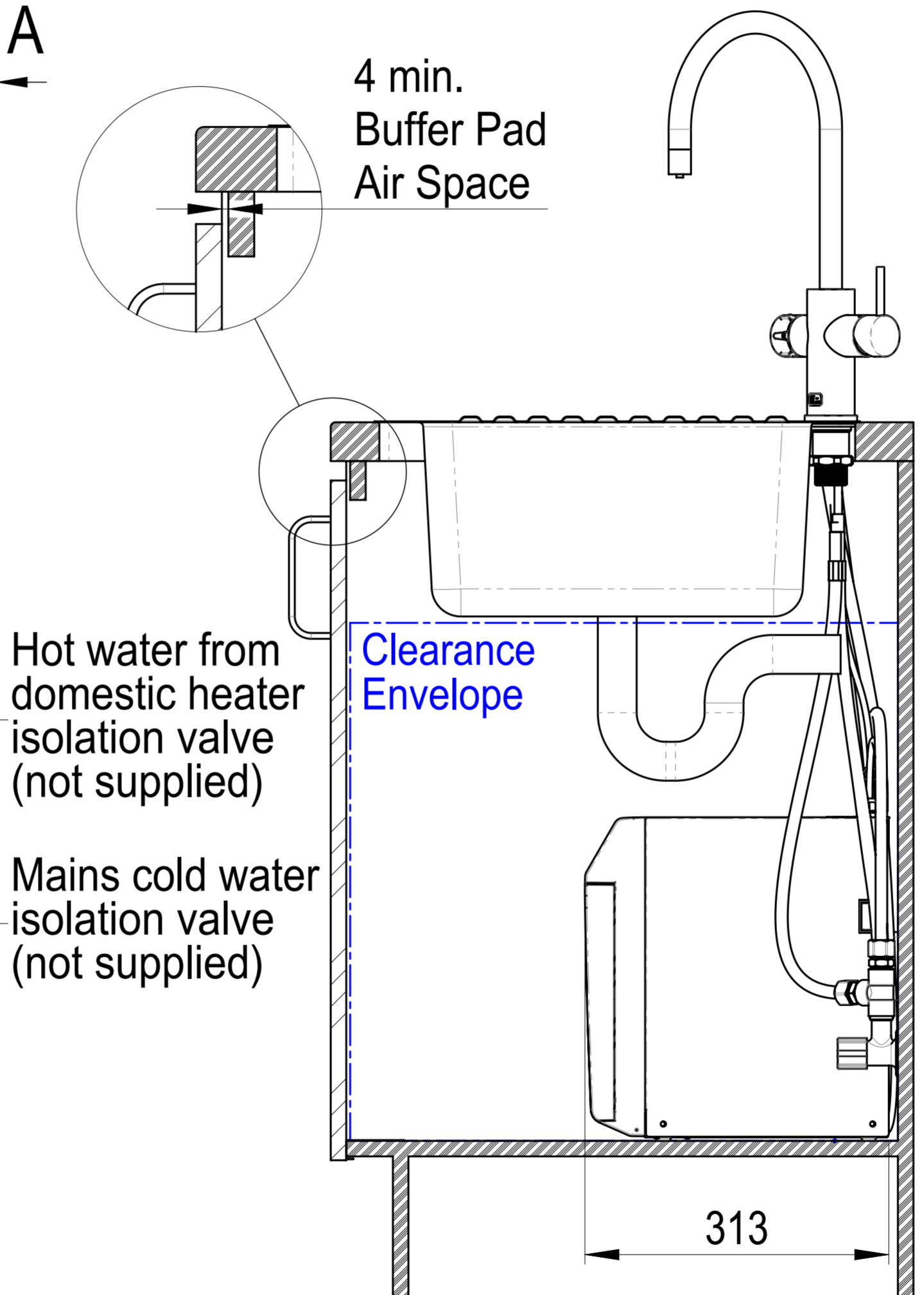
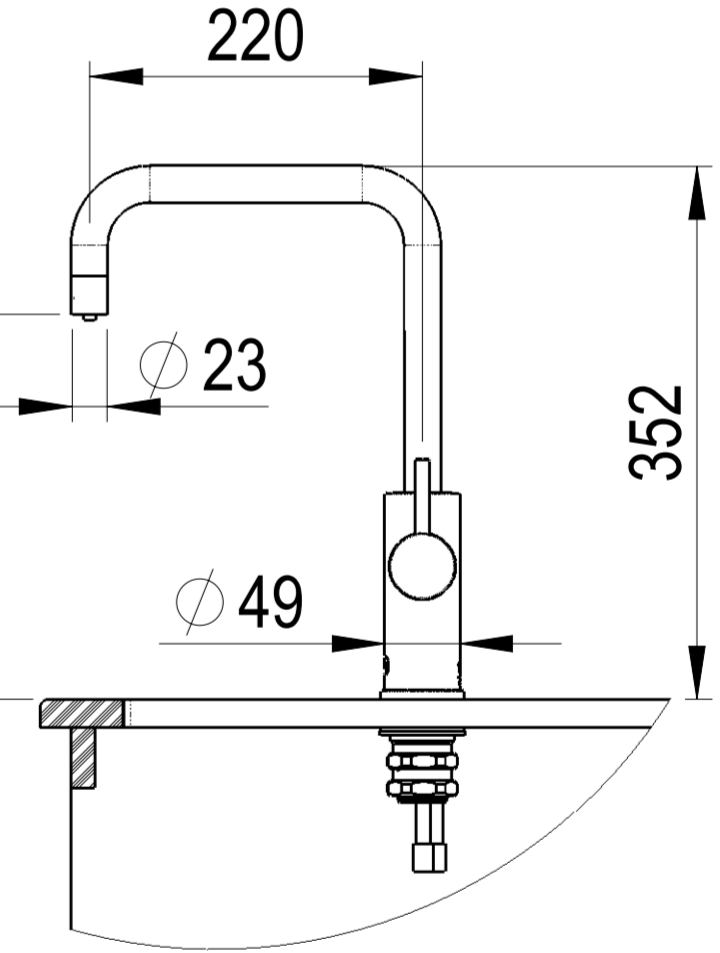
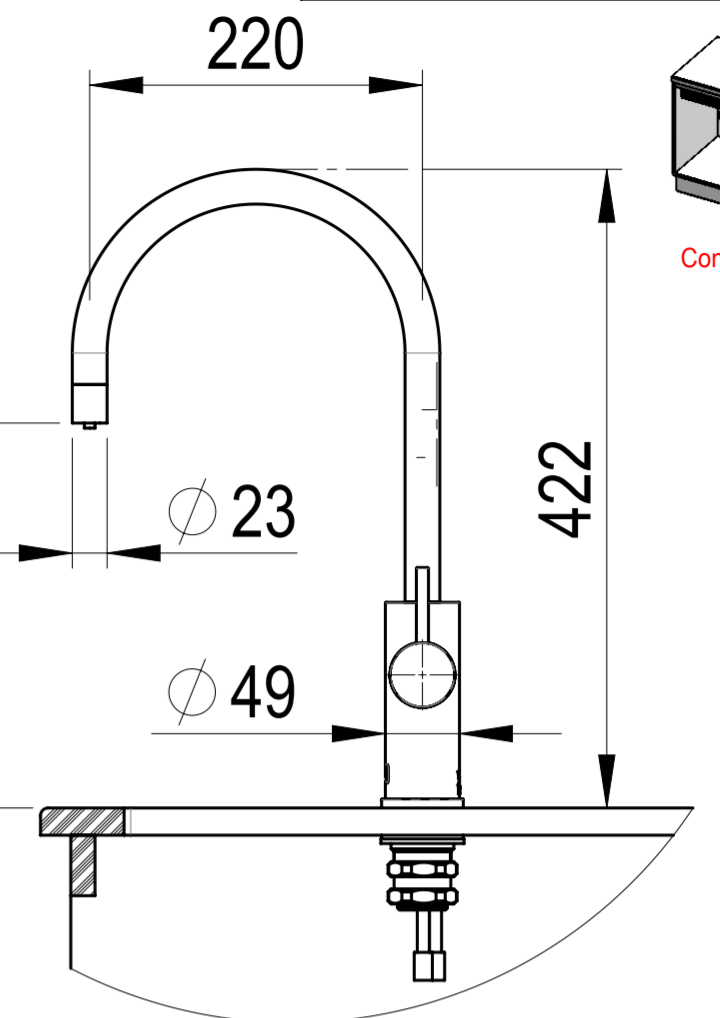
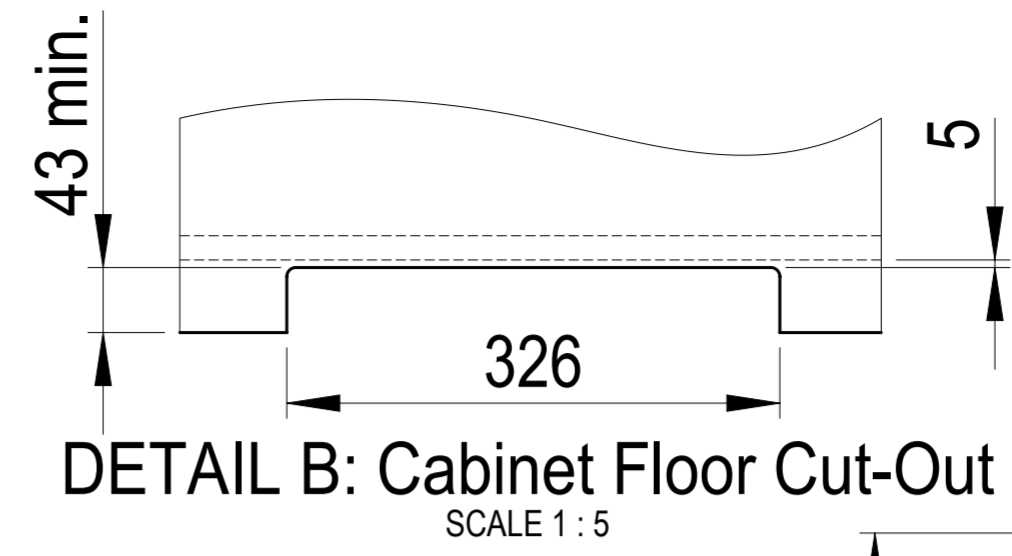
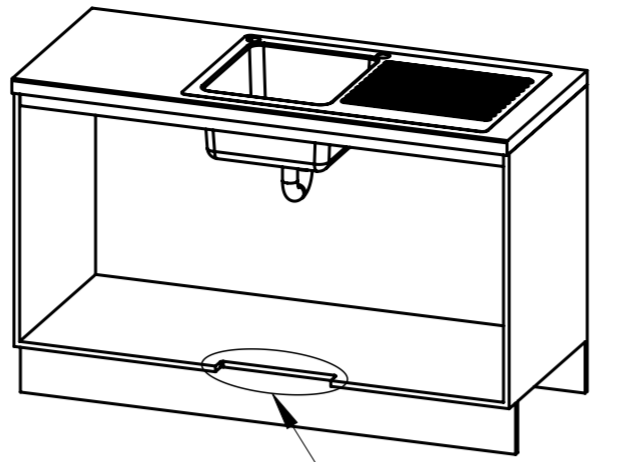
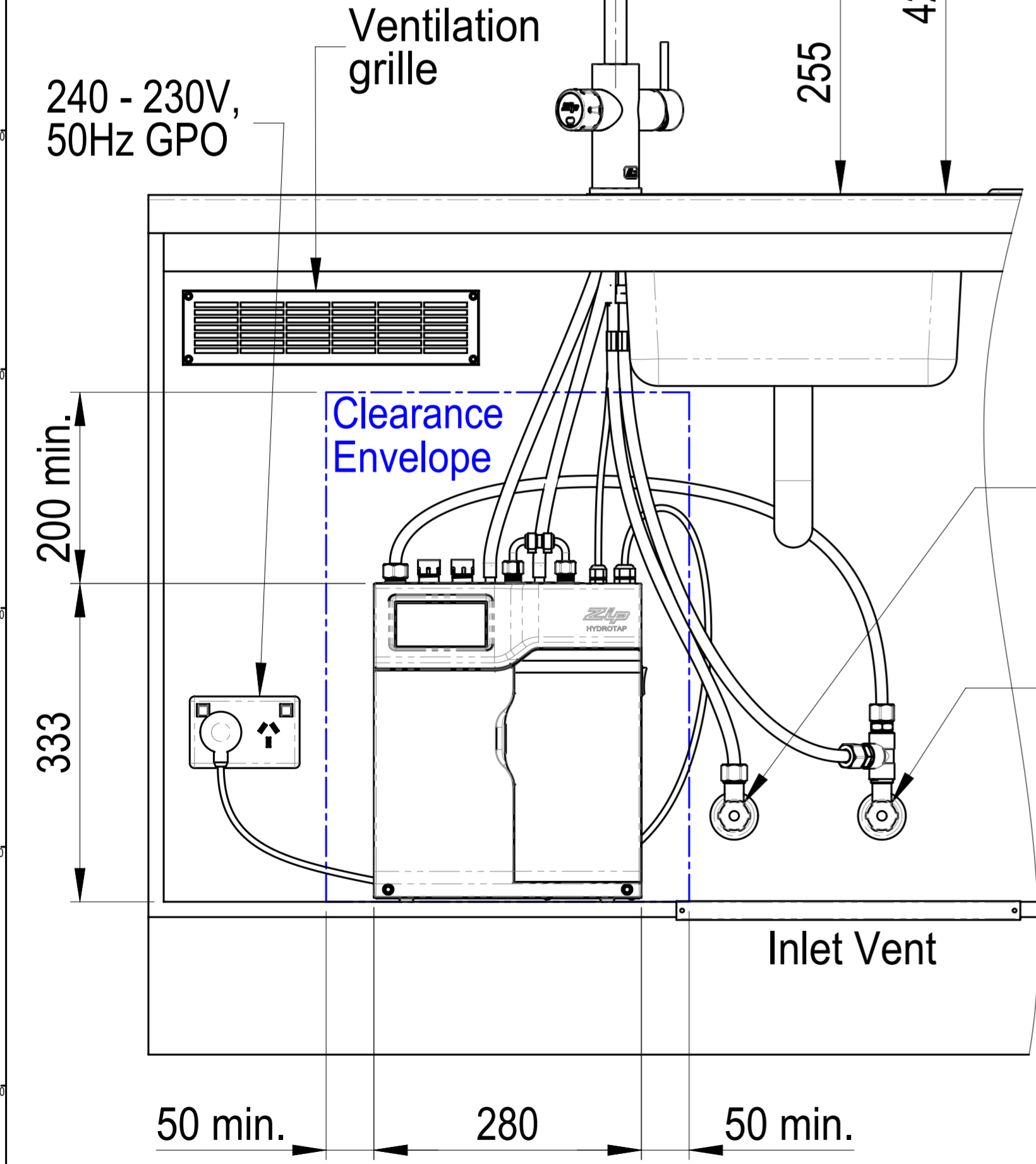
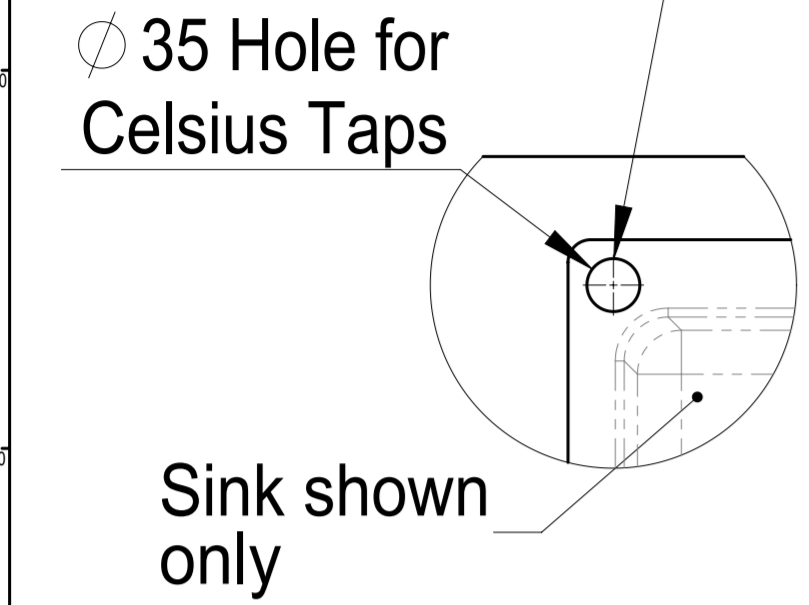


Item	Part	Rev	Description	Qty
2	800220	C	Kickboard Fan Grill	1
3	800221	C	Air Inlet Grill CFF	1
7	1300AU	00	HydroTap G4 Residential B Base Module Mains/UV	1
8	84451	A	Tee 1/2" BSP Female (Brass)	1
9	86451	A	Nipple-Tapered 1/2" (No 27)	2
12	802099	00	Celsius Arc Tap - Boiling	1

Position the Tap such that it dispenses into the sink bowl with ample clearance for a cup or a tea pot.



This set-up is applicable to:
 B Residential:
 MT2786: 1300AU0C0ZN1R w/ Celsius Arc Tap
 MT3786: 1300AU0C1ZN1R w/ Celsius Cube Tap

This drawing is CONFIDENTIAL and is supplied on the express condition that it shall not be LOANED, COPIED or DISCLOSED to any other third party or used for any purpose without the written consent of Zip Industries Pty Ltd. If this document is printed in hardcopy form, it is for INFORMATION ONLY and therefore not subject to updating controls. For the current revision ALWAYS refer to the NATIVE electronic form as stated in the top left-hand corner of this sheet. © copyright Zip Industries Pty Ltd, 16/05/2011		Zip Industries <i>Zip</i>	
Manufacturing Instructions Make or Buy: Buy Manufacturing Route: Manufacturing Process Raw material: See Components Finish: Remove all sharp edges. This drawing ONLY details information which cannot be ascertained from the 2D geometry of the parts attached. Model & dimensions are AFTER all finishing operations.		Approved by: nickm on 11/11/2014 Checked by: nickm on 11/11/2014 Updated by: edgar on 13/05/2015 8:07:53 AM Material: See Components Project: HydroTap G4B Model: KL002_1300AU0C0ZN1R Configuration: Default Created by & on: EdgarG on 4/05/2011 Created by & on: EdgarG on 16/05/2011 Rev: 01	
Description: Assy - Kitchen Layout UK (HydroTap G4 Residential Boiling Only G4 Unit & Celsius Arc or Cube Tap)		Drawing: KL002_1300AU0C0ZN1R	
Volume (mm ³): 84002.8 Mass (kg): 96808.6	Area (mm ²): 149516.6 Density (g/mm ³): 12	Derived from: New Scale: 1:1 Sheet: 1 of 1	Colour: Colourless Status: Prototype Drawing Property: Part Property