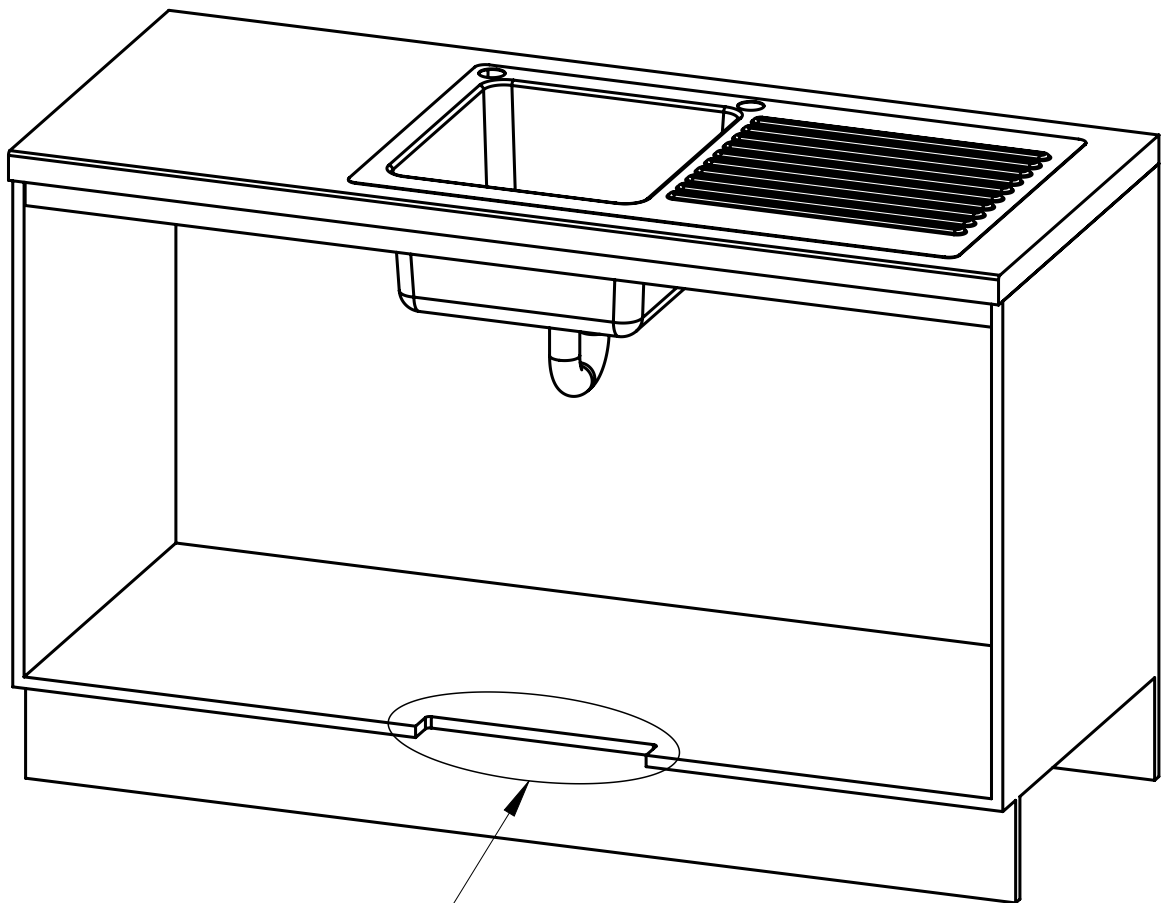


Table - Zip BOM (Assembly + Make/Buy)						
Item	Part	Rev	Description	Status	Qty	Make or Buy?
5	800221	C	Air Inlet Grill CFF	Production	1	Make
6	83393	A12	Ventilation Grille Hafele	Prototype	1	Buy
7	802433	00	HydroTap Arc Tap	Design	1	Buy
10	1254AU1	A	HydroTap G4 Residential BCS Base Module Mono/Diverted	Production	1	Buy
14	802084	A03	"Y" Connector JG 1/4"	Prototype	1	Buy
15	93255	A01	KF 0302 "2 x 1kg Gas+Regulator, 1kg/2.2L"	Prototype	1	Buy
19	1254AU0T0Z1R	00	Description (Config)	Design	1	Buy

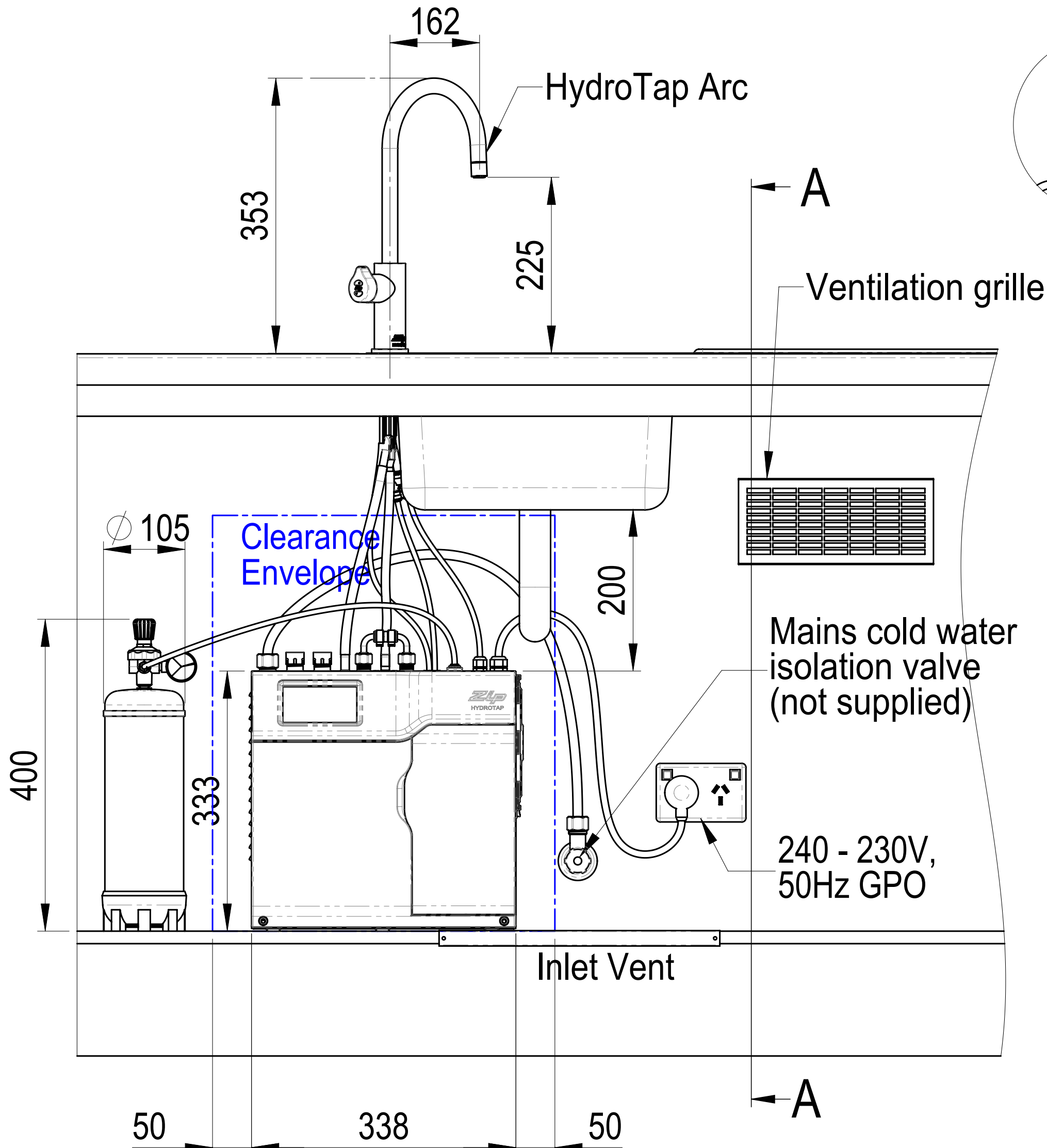


Ventilation Detail

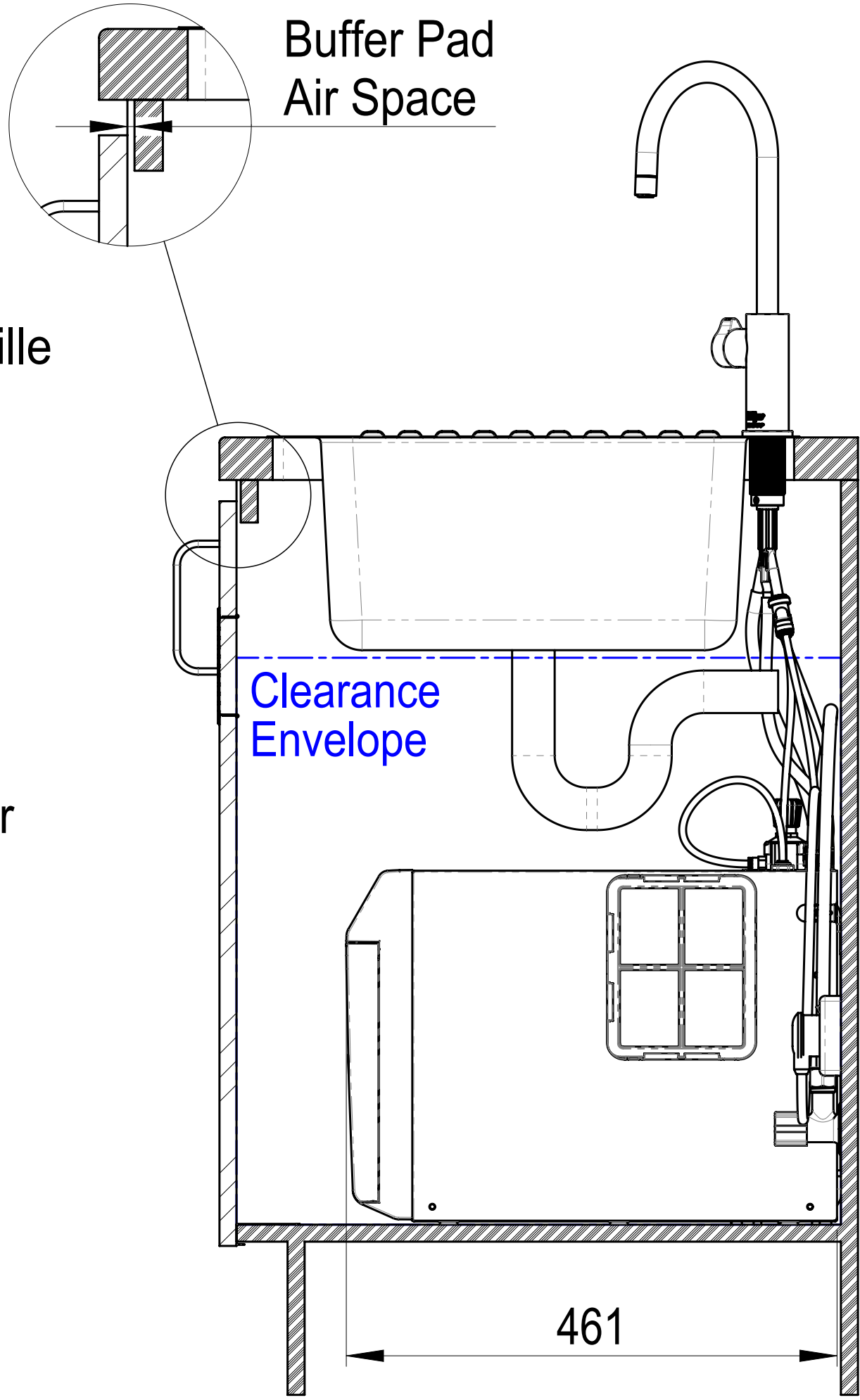
Position the Tap such that it dispenses into the sink bowl with ample clearance for a cup or a tea pot. Alternatively, the Tap could be mounted away from the sink using a Zip Font available as an accessory.

Sink shown only

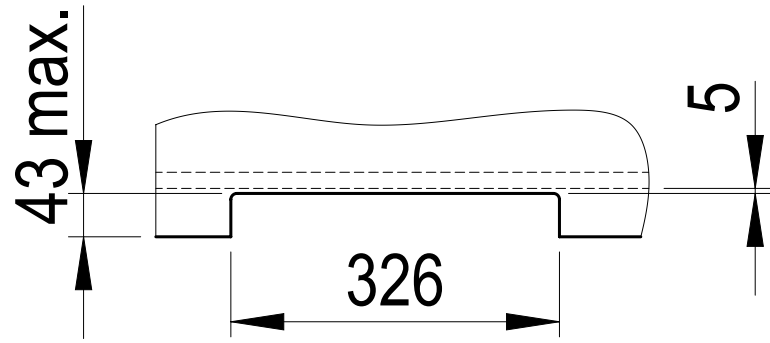
Ø 35 Hole for HydroTap Arc, HydroTap Cube or Elite Taps



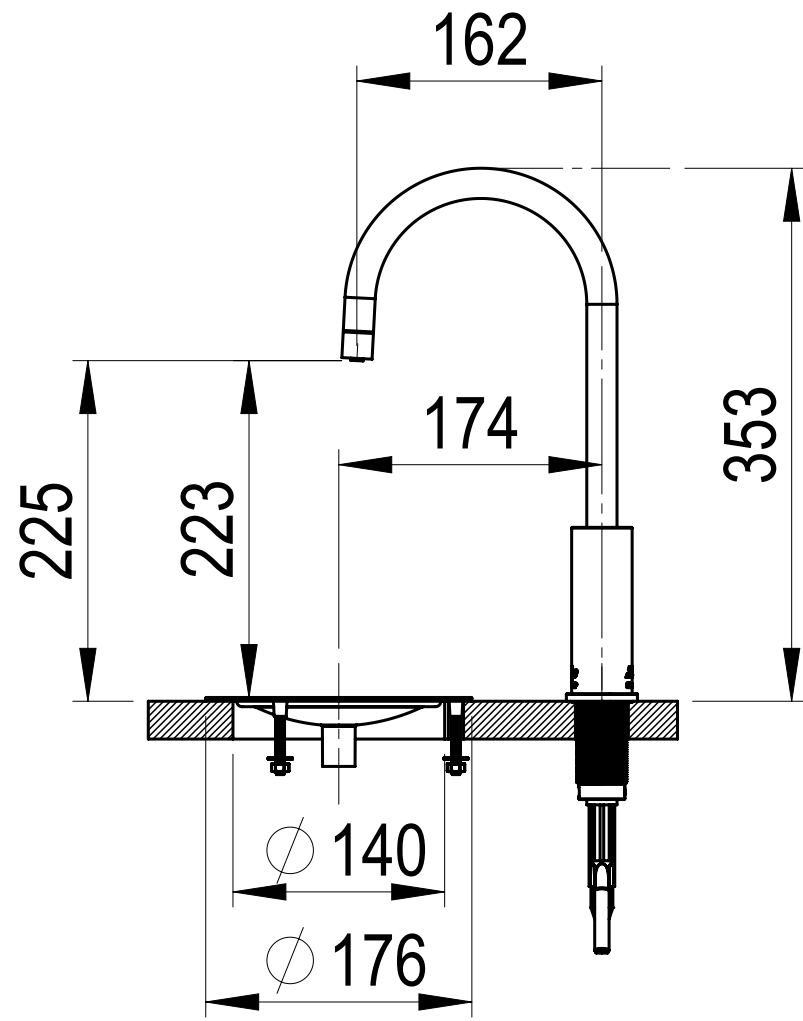
4 min. Buffer Pad Air Space



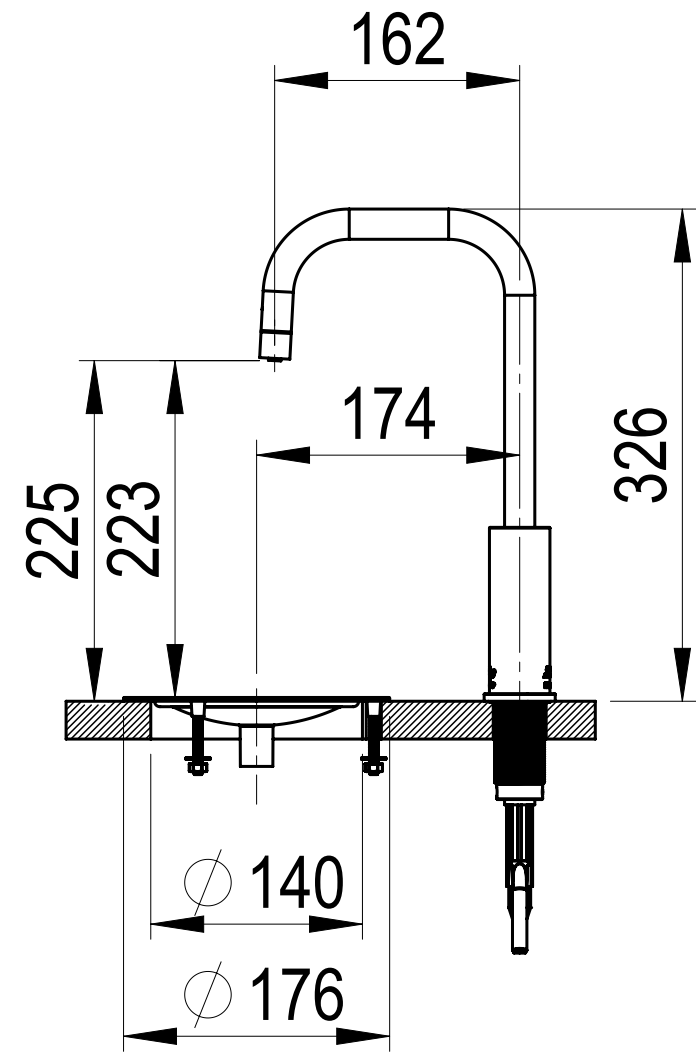
SECTION A-A
SCALE 1 : 5



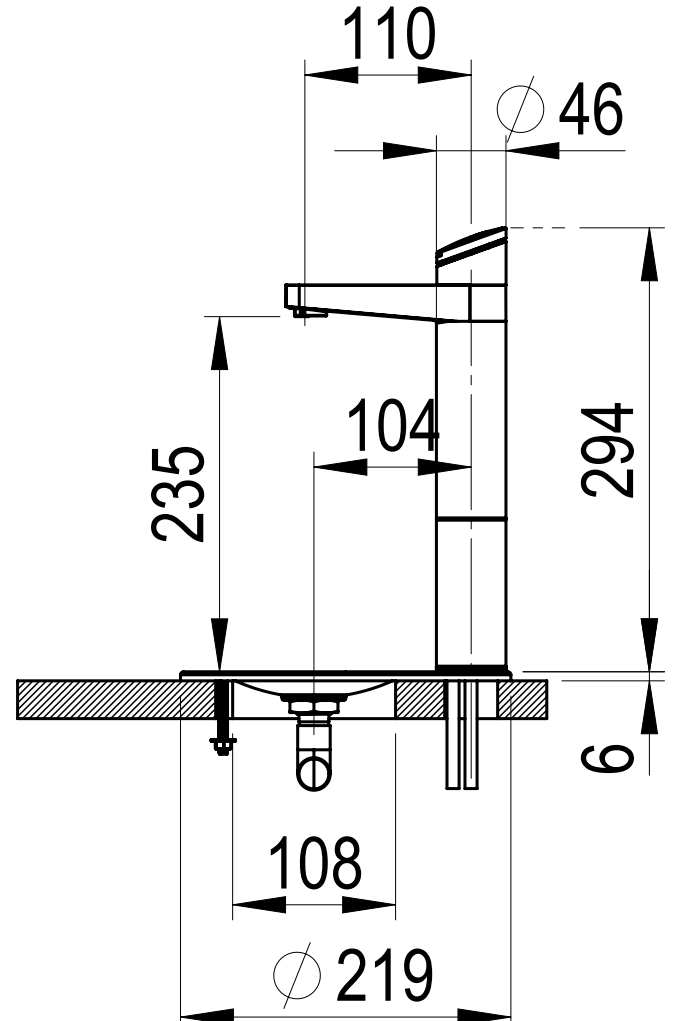
DETAIL B: Cabinet Floor Cut-Out
SCALE 1 : 7.5



HydroTap Arc with Font

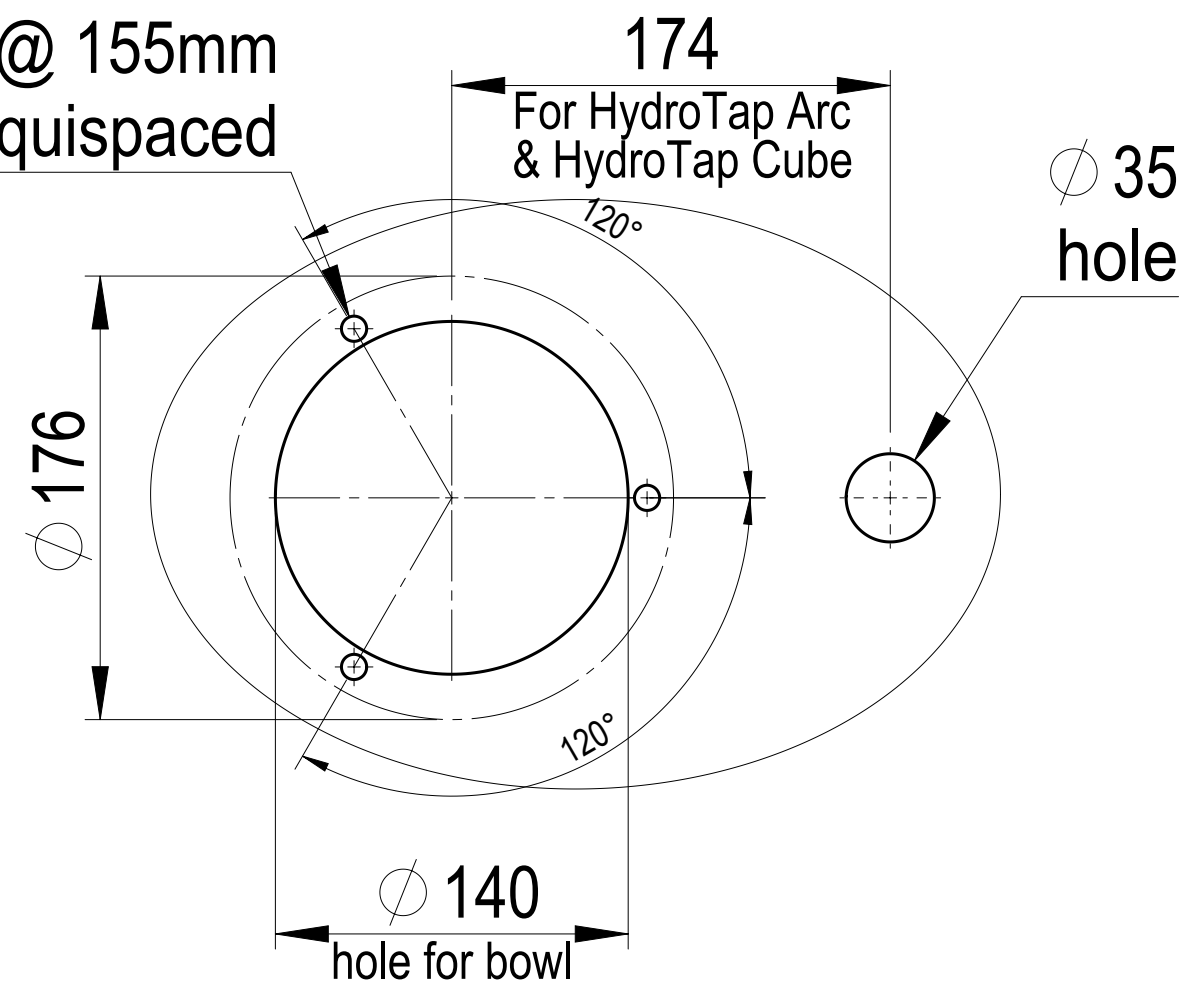


HydroTap Cube with Font

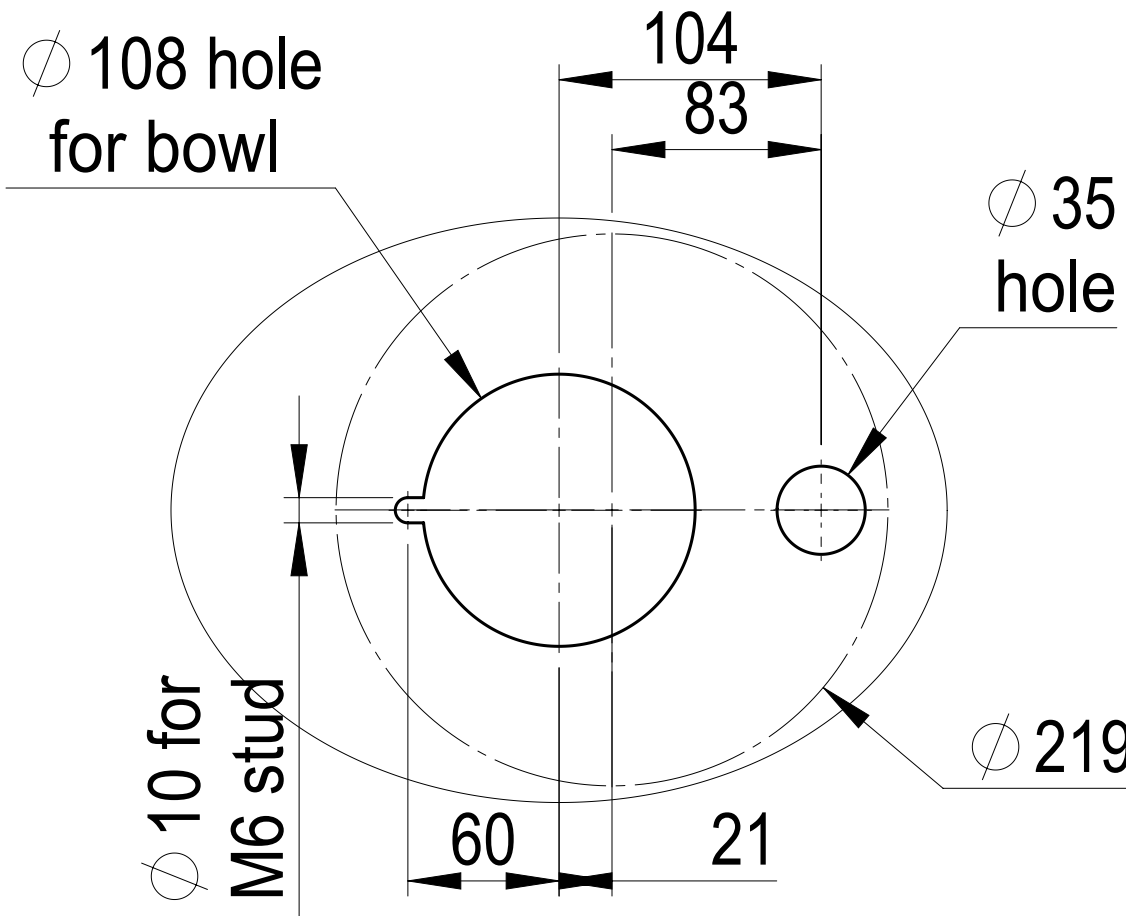


Elite Tap with Font

3- Ø 10 holes @ 155mm P.C.D. equispaced

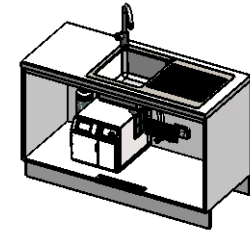


Cutting Detail for
HydroTap Arc & HydroTap Cube
with Font



Cutting Detail for
Elite Tap with Font

This set-up is applicable to:
BCS Residential:
HT2783: 1254AU0T0ZN1R w/ HydroTap Arc Tap
HT3783: 1254AU0U0ZN1R w/ HydroTap Cube Tap
HT4783: 1254AU0E4ZN1R w/ Elite Tap



Configuration : Default