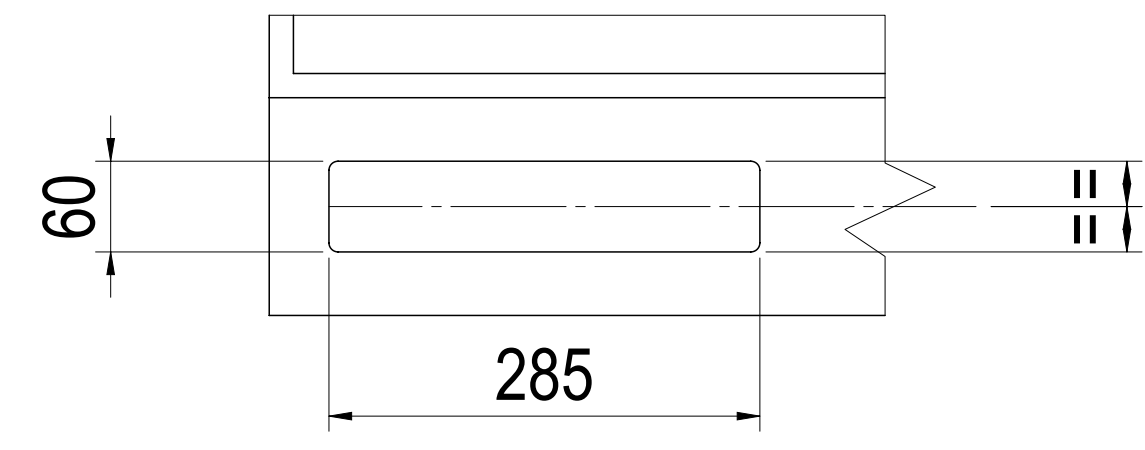
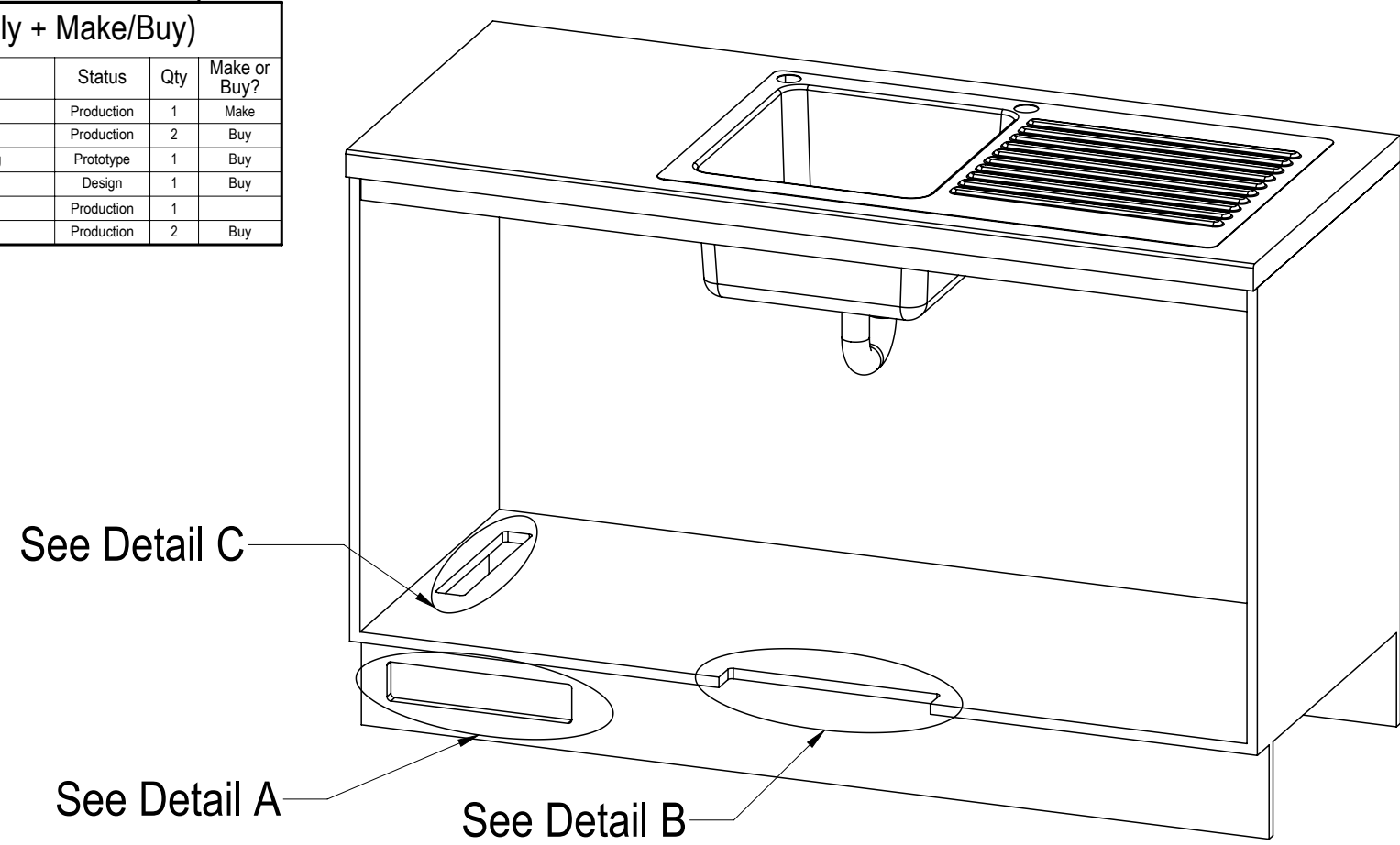
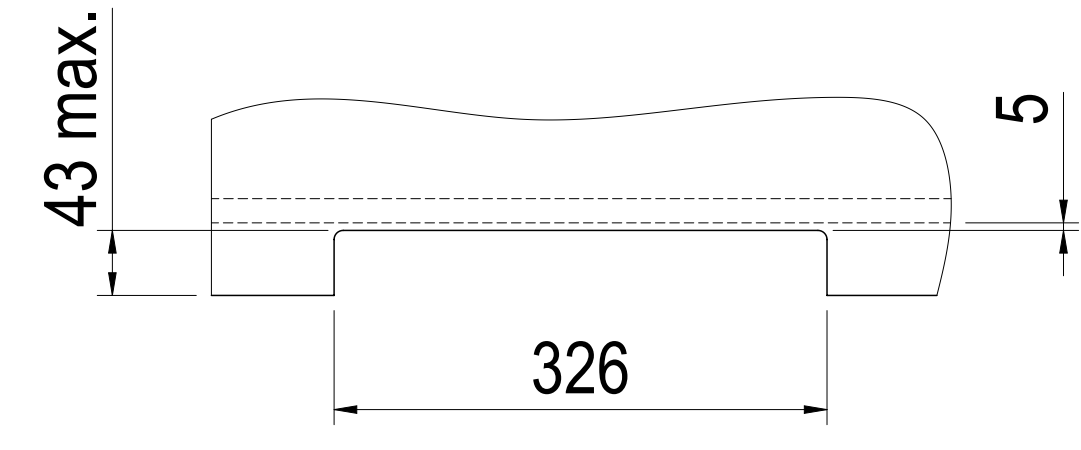


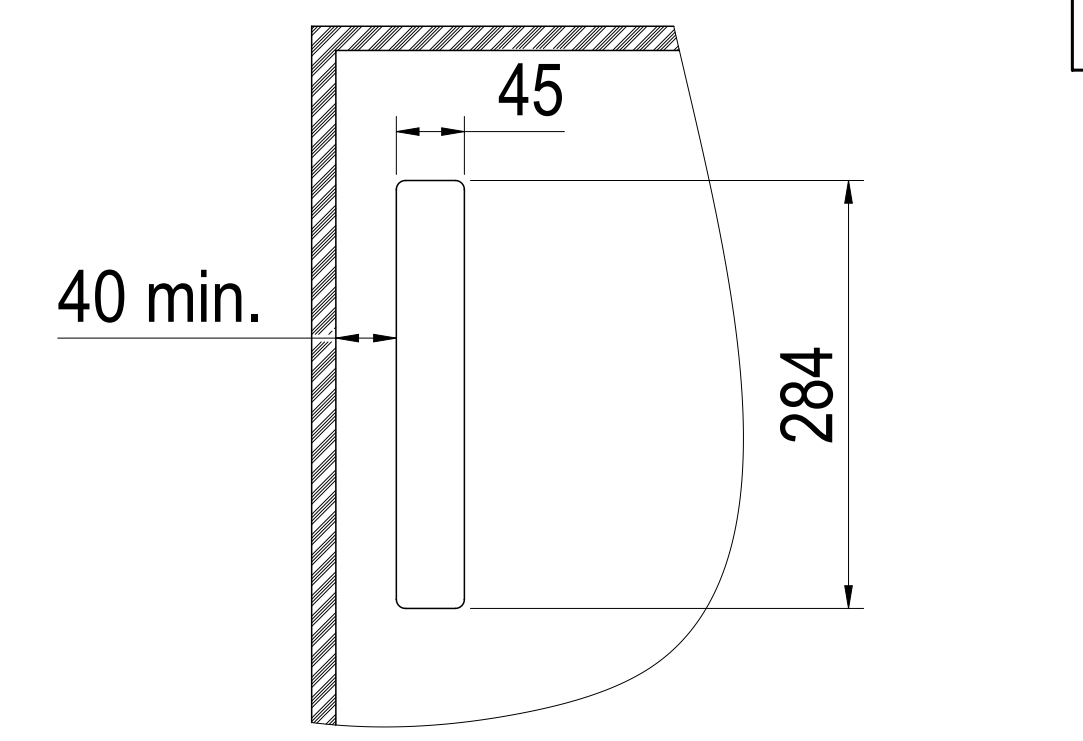
Item	Part	Rev	Description	Status	Qty	Make or Buy?
2	800221	C	Air Inlet Grill CFF	Production	1	Make
3	800220	C	Kickboard Fan Grill	Production	2	Buy
5	0053AU	01	HydroTap G4 CS175 Chilled Sparkling	Prototype	1	Buy
9	802107	00	Celsius Arc Tap - Chilled Sparkling	Design	1	Buy
17	86451	A	Fan 12" SSP Female (Braz)	Production	1	Buy
18	86451	A	Nipple-Tapered 1/2" (No 27)	Production	2	Buy



DETAIL A: Kickboard Cut-Out  
SCALE 1 : 5



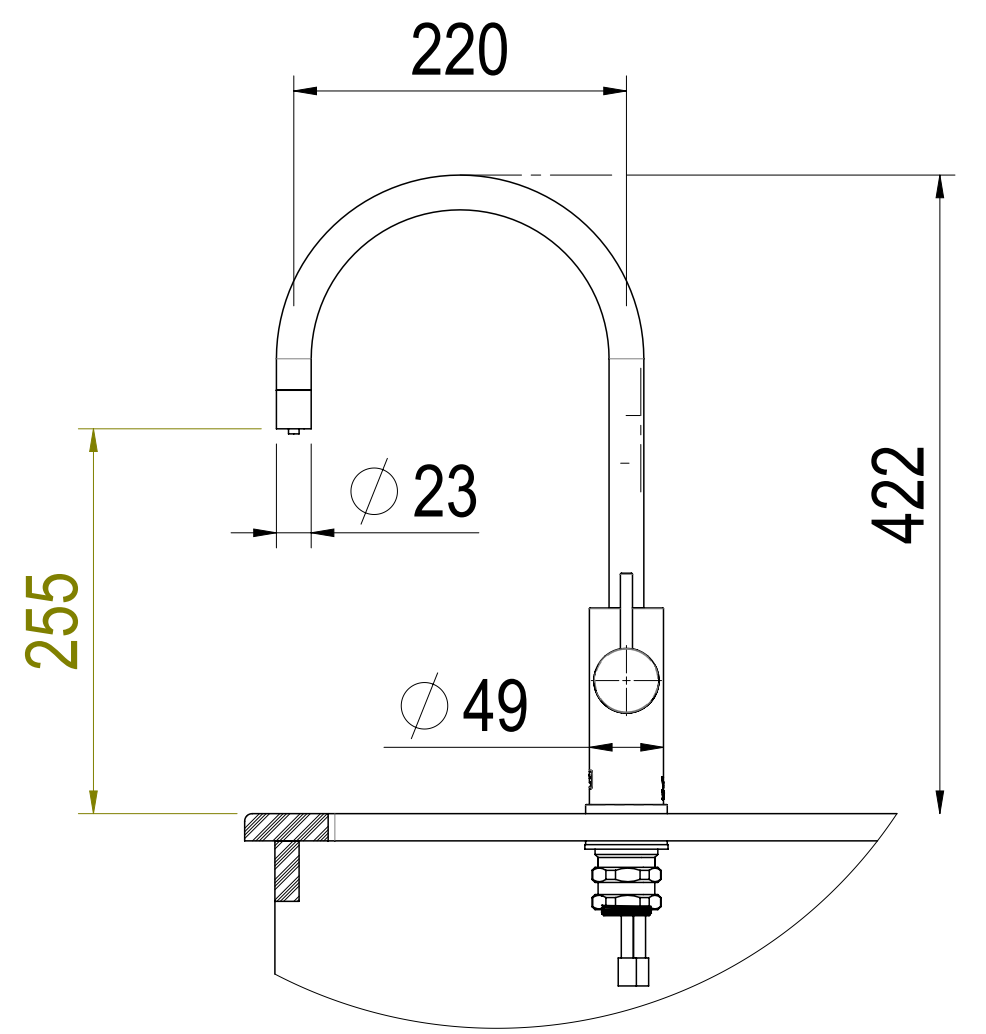
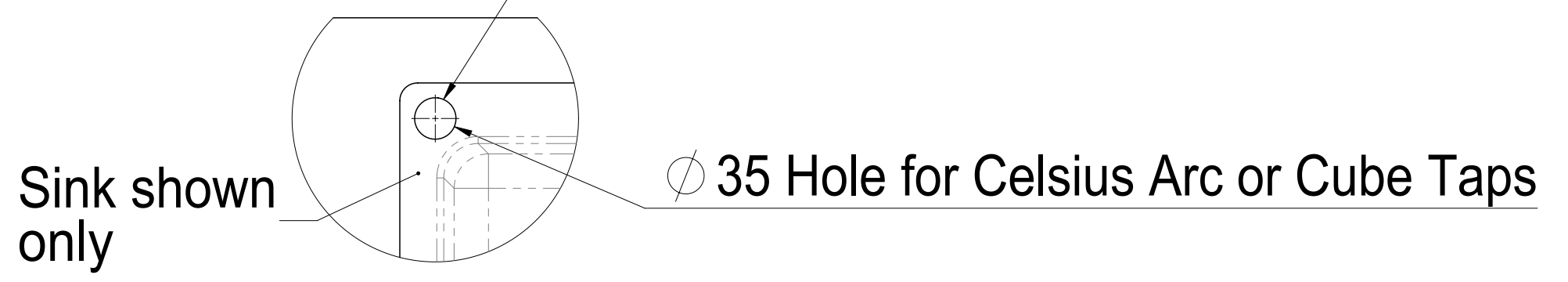
DETAIL B: Cabinet Floor Cut-Out  
SCALE 1 : 5



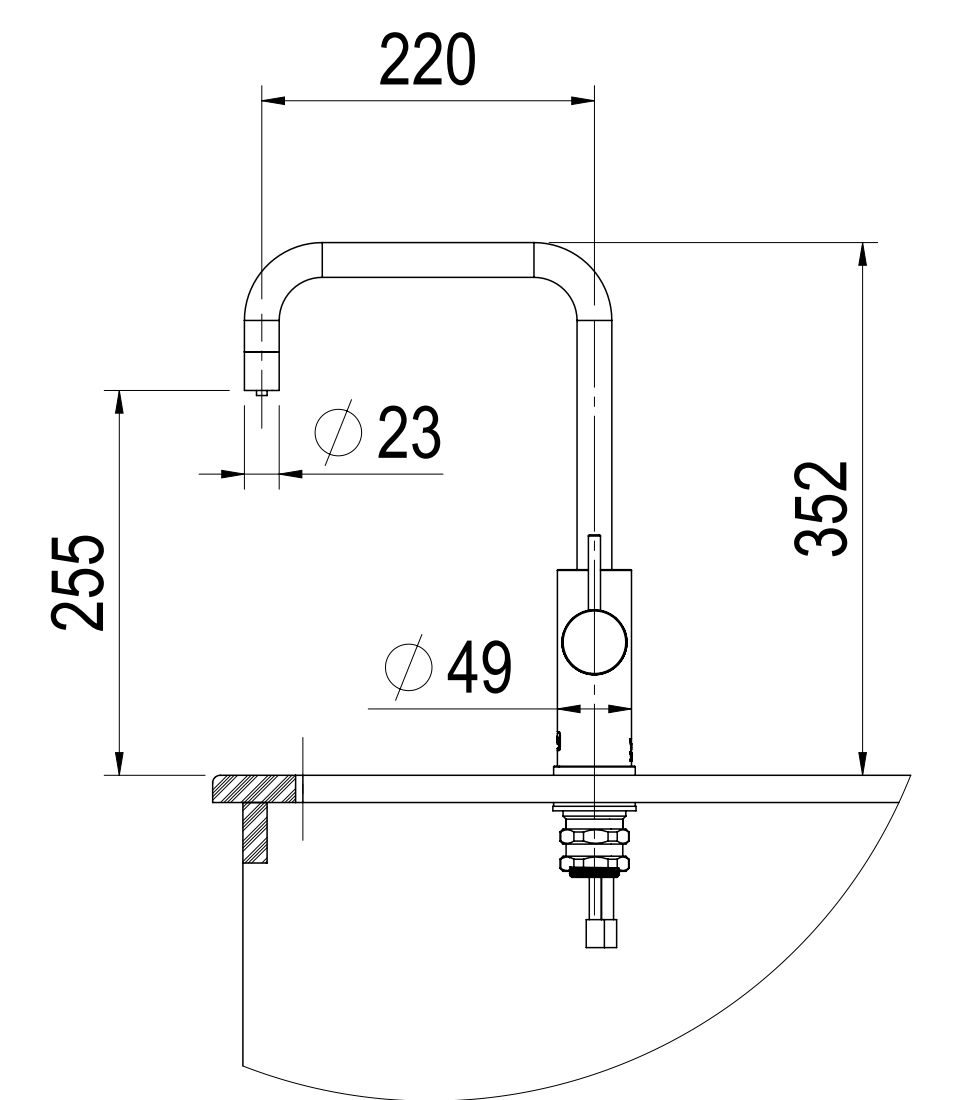
DETAIL C: Cabinet Floor Cut-Out  
SCALE 1 : 5

Ventilation Details

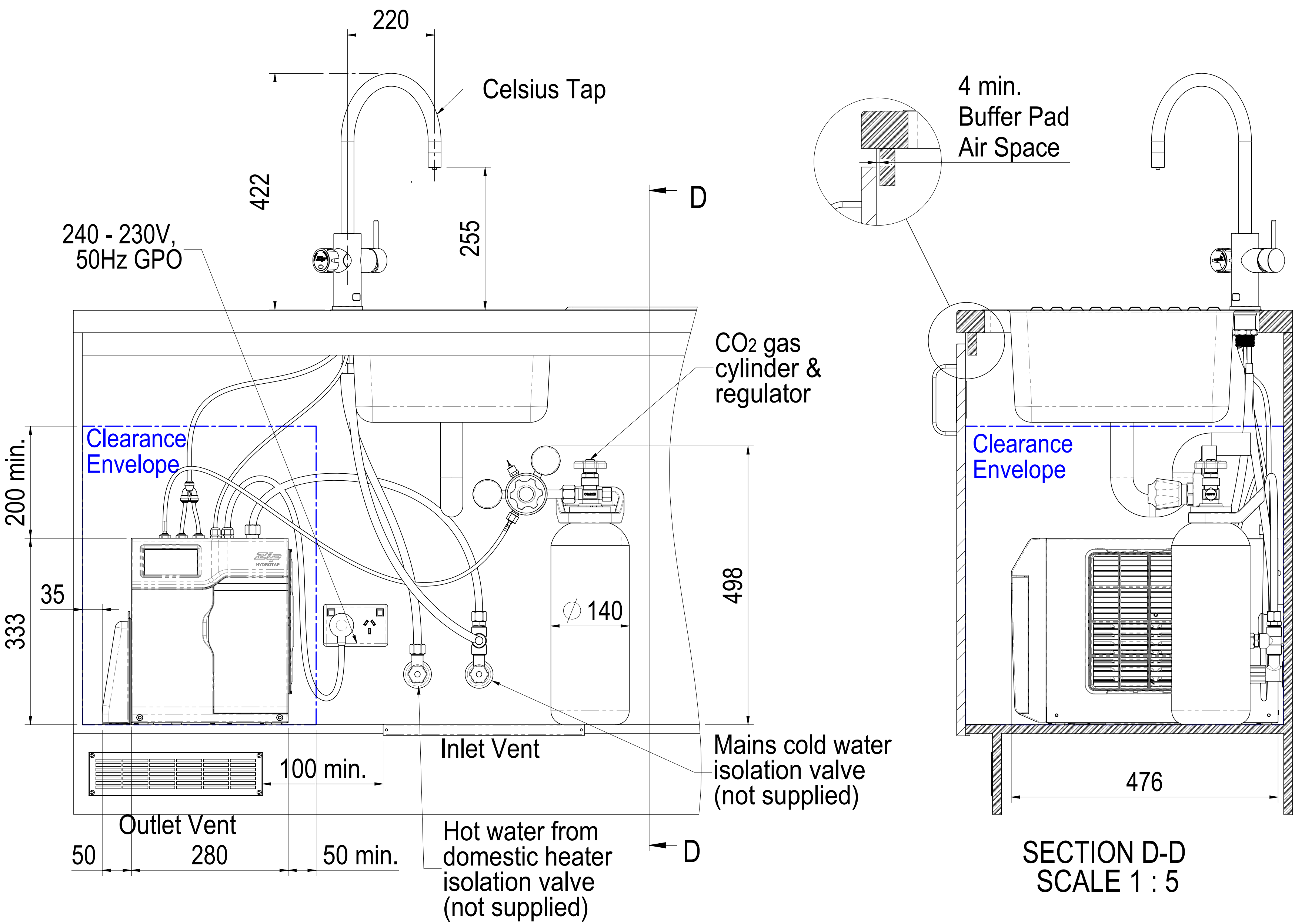
Position the Tap such that it dispenses into the sink bowl with ample clearance for a cup or a tea pot.



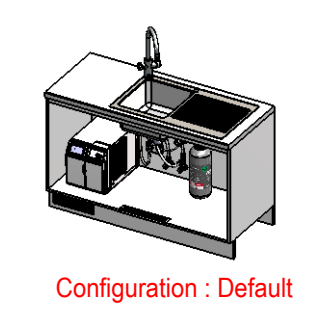
Celsius Arc Tap Option



Celsius Cube Tap Option



This set-up is applicable to:  
 CS175  
 MT2762: 0053AU0C4ZN1C w/ Celsius Arc Tap  
 MT3762: 0053AU0C5ZN1C w/ Celsius Cube Tap



<p>This drawing is CONFIDENTIAL and is supplied on the express condition that it shall not be LOANED, COPIED or DISCLOSED to any other third party or used for any purpose without the written consent of Zip Industries Pty Ltd. This document is printed in hardcopy form. It is for INFORMATION ONLY and therefore not subject to updating controls. For the current revision ALWAYS refer to the MATRIS database form as detailed in the top left hand corner of this sheet. © copyright Zip Industries Pty Ltd. 2014/2015</p>		<p>Zip Industries <b>Zip</b></p>	
<p><b>Manufacturing Instructions</b></p>		<p><b>Configuration</b></p>	
<p>Make or Buy: Buy</p>	<p>Approved by: Unapproved on 10/12/2011</p>	<p>Project: HydroTap G4B</p>	
<p>Manufacturing Route: Manufacturing Process</p>	<p>Checked by: Unchecked on 10/12/2011</p>	<p>Configuration: Default</p>	
<p>Raw material: See Components</p>	<p>Updated by: edging on 13/02/2015 9:25:59 AM</p>	<p>Created by &amp; on: Edging on 4/05/2011</p>	
<p>Remove all sharp edges. This drawing ONLY details information which cannot be ascertained from the 3D geometry of the part(s) attached. Model &amp; dimensions are AFTER all finishing operations.</p>	<p>Material: See Components</p>	<p>Model: KL002_0053AU0C4ZN1C</p>	
<p>Comments:</p>	<p>Finish: Edging</p>	<p>Created by &amp; on: Edging on 29/06/2015</p>	
<p>Volume: 84516</p>	<p>Area: 153169.8</p>	<p>Model: KL002_0053AU0C4ZN1C</p>	
<p>Mass: 94890.3</p>	<p>Density: 1.1</p>	<p>Created by &amp; on: Edging on 29/06/2015</p>	
<p>Scale: 1:1</p>	<p>Sheet: 1 of 1</p>	<p>Model: KL002_0053AU0C4ZN1C</p>	
<p>Recyclable? No</p>	<p>Handed? No</p>	<p>Created by &amp; on: Edging on 29/06/2015</p>	
<p>WMA 00099; CS8328</p>	<p>Watermark Exp: 26-10-2017; CS Exp: 18-8-2014</p>	<p>Model: KL002_0053AU0C4ZN1C</p>	
<p>Drawing Property</p>	<p>Config Property</p>	<p>Model: KL002_0053AU0C4ZN1C</p>	
<p>Custom Property</p>	<p>Size: A1</p>	<p>Model: KL002_0053AU0C4ZN1C</p>	