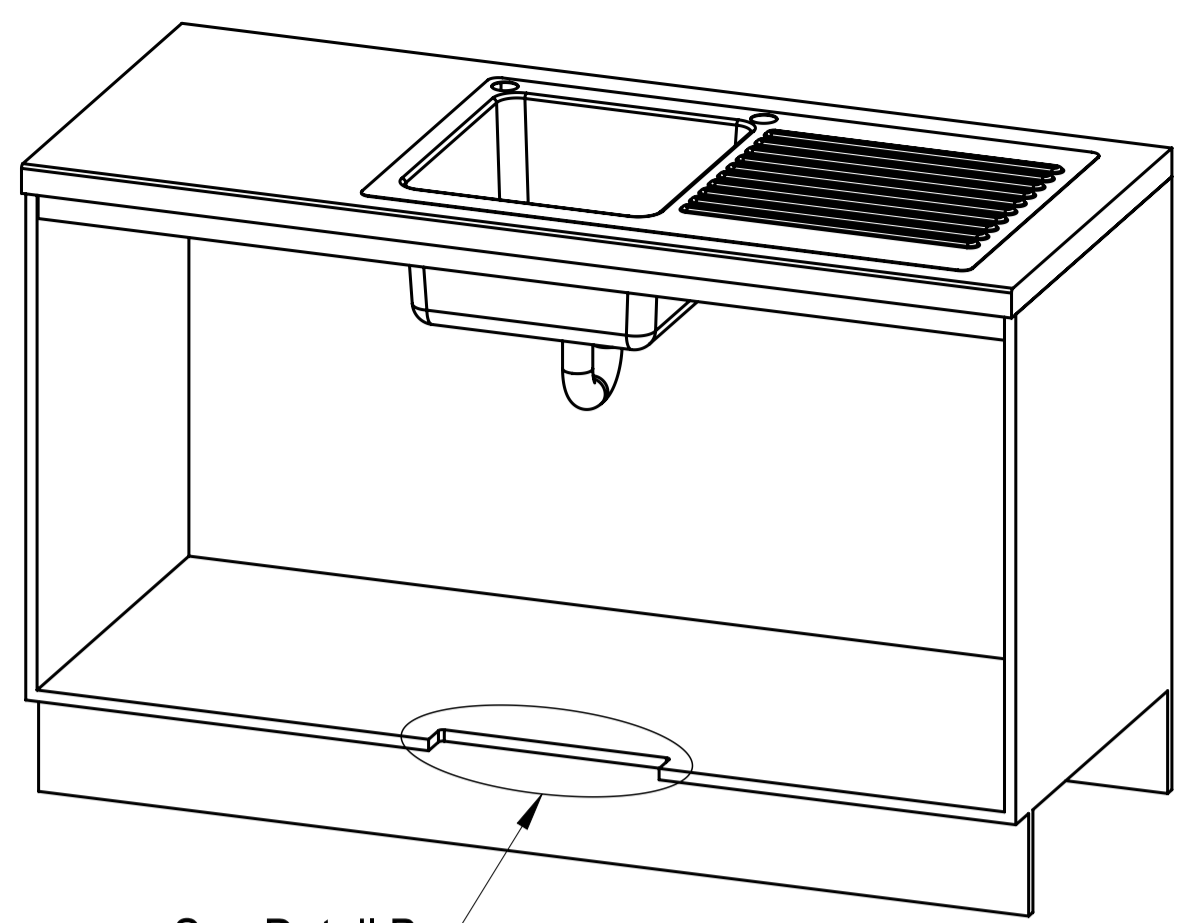
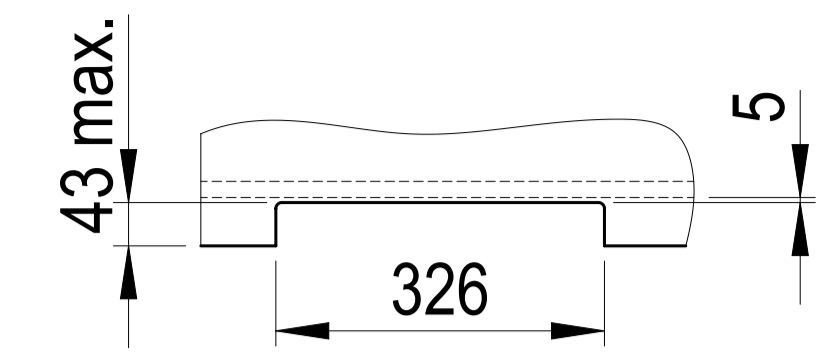


Item	Part	Rev	Description	Status	Qty	Make or Buy?
5	800221	C	Air Inlet Grill CFF	Production	1	Make
6	83303	A14	Ventilation Grille Handle	Pending Pre-Production	1	Buy
7	802433	00	HydroTap Arc Tap	Design	1	Buy
11	0014AU	00	HydroTap G4 Residential C Base Module (Upgraded 2016 w/ IEC)	Design	1	Buy
14	A2872	01	IEC Female Plug	Pending Pre-Production	1	Buy

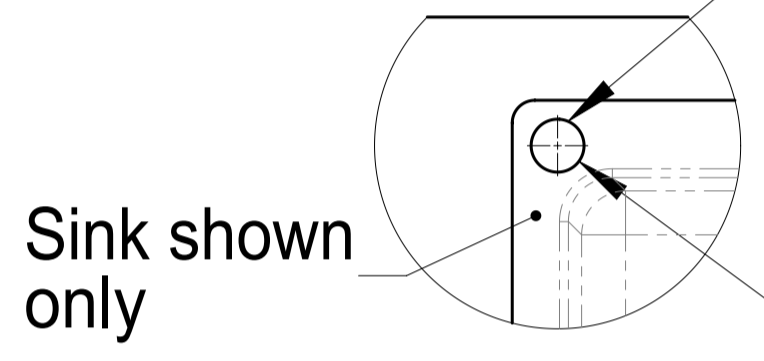


See Detail B
Ventilation Detail

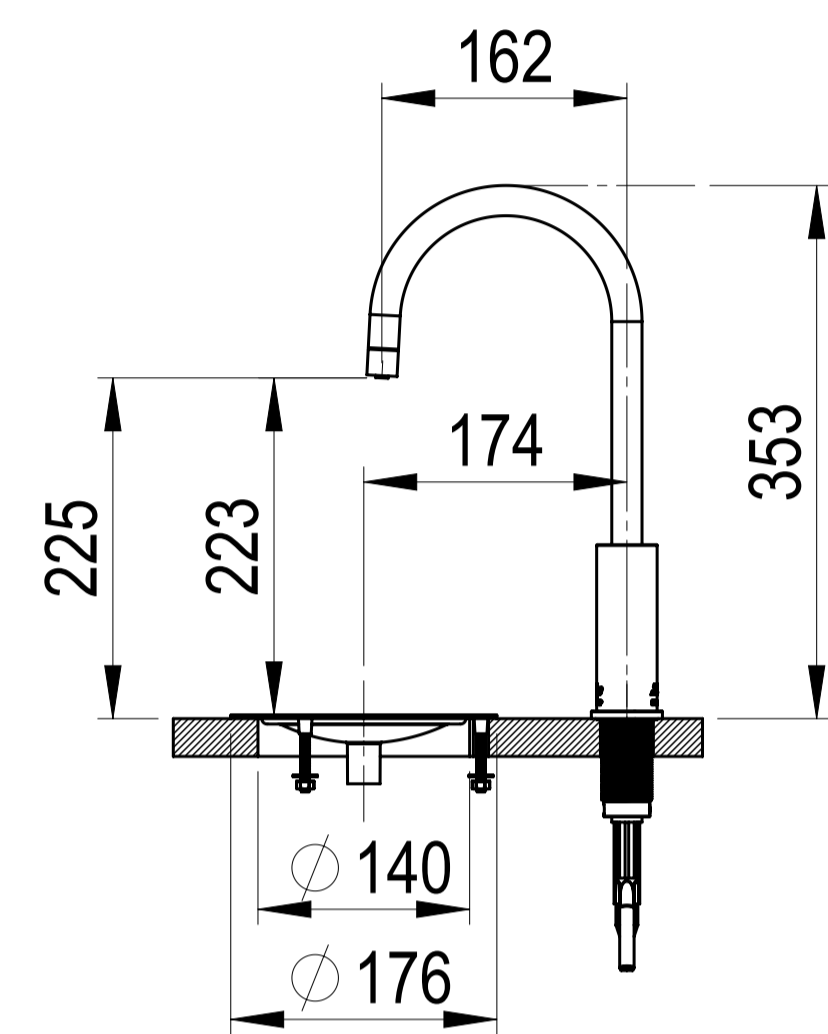


DETAIL B: Cabinet Floor Cut-Out
 SCALE 1 : 7.5

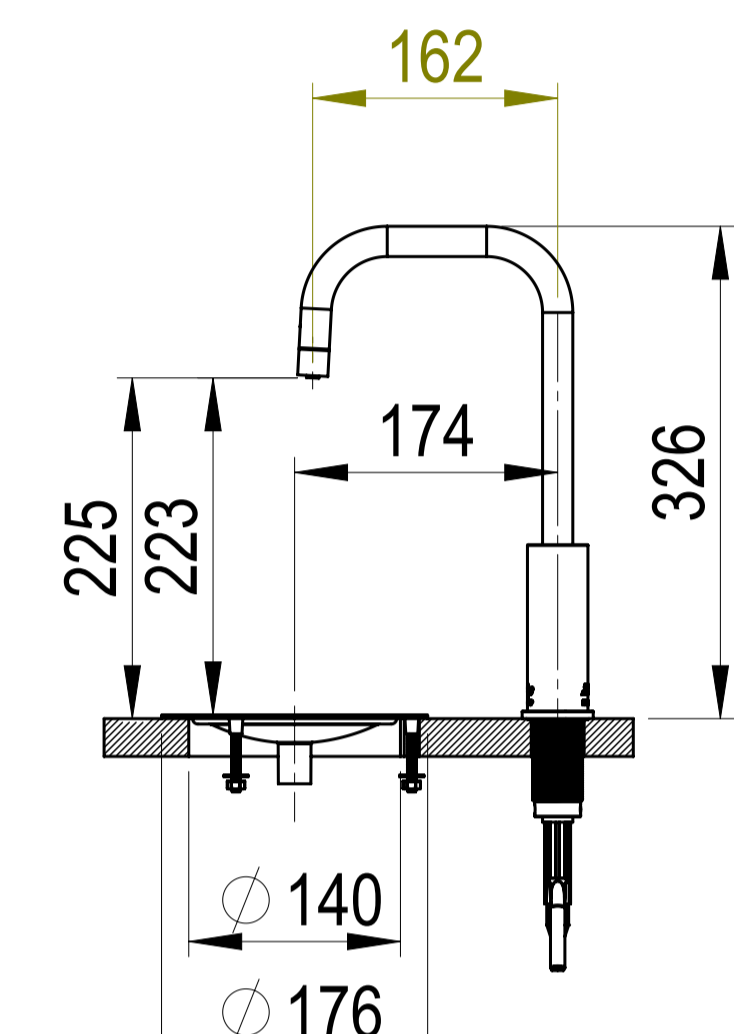
Position the Tap such that it dispenses into the sink bowl with ample clearance for a cup or a tea pot. Alternatively, the Tap could be mounted away from the sink using a Zip Font available as an accessory.



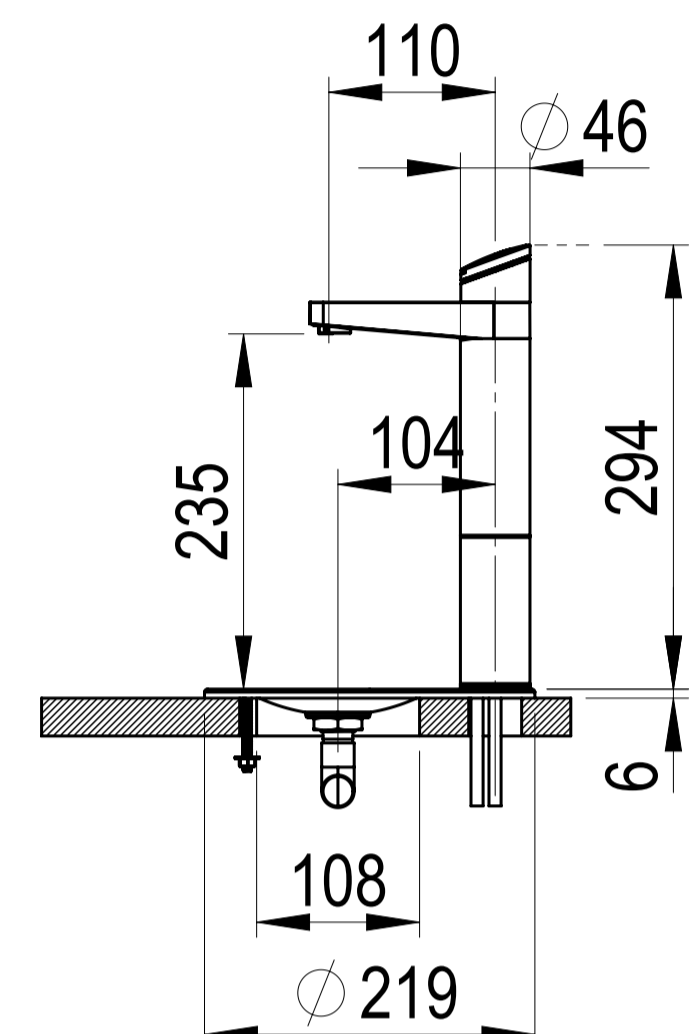
Ø 35 Hole for HydroTap Arc, HydroTap Cube or Elite Taps



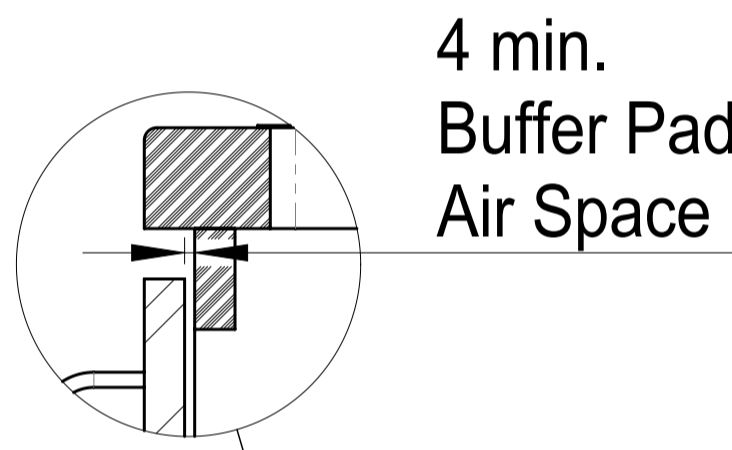
HydroTap Arc with Font



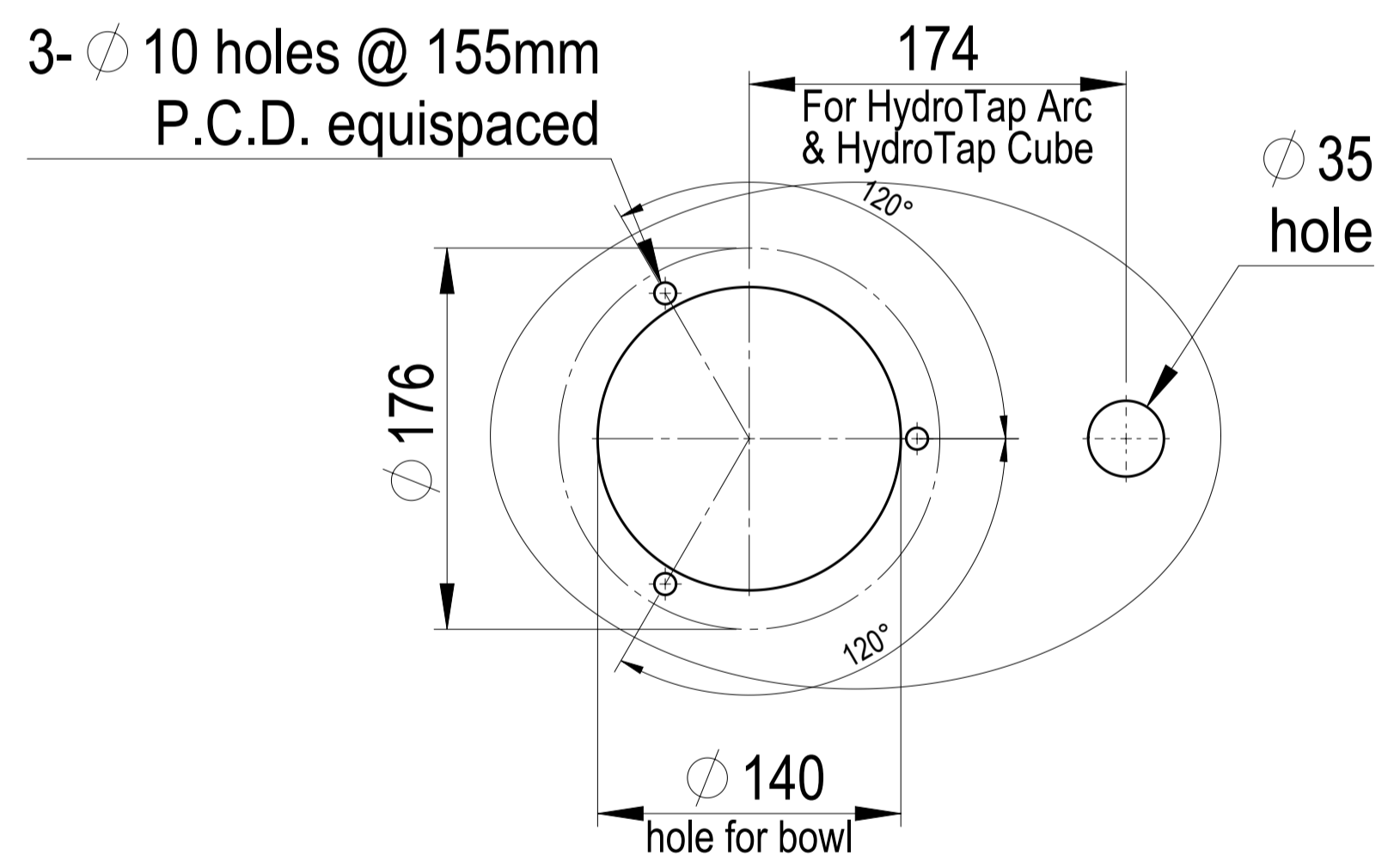
HydroTap Cube with Font



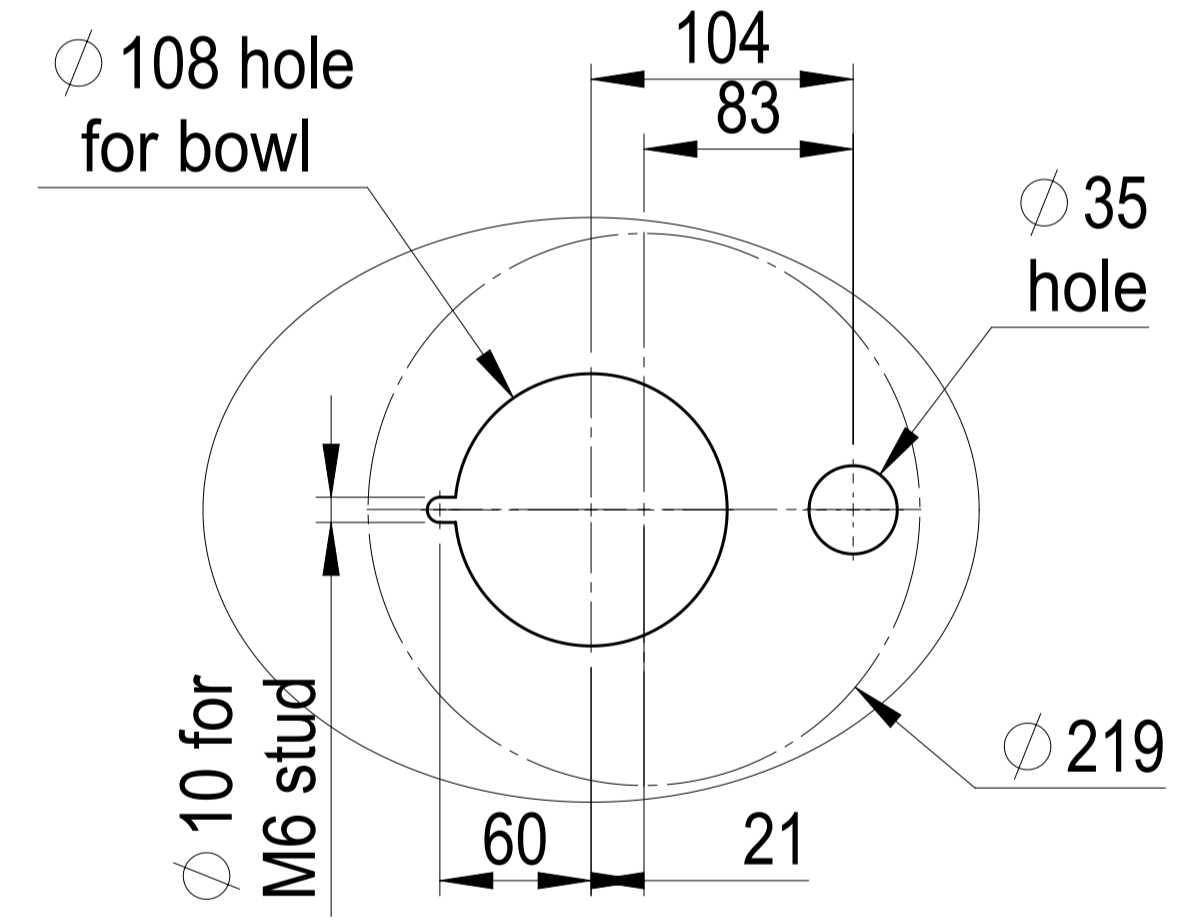
Elite Tap with Font



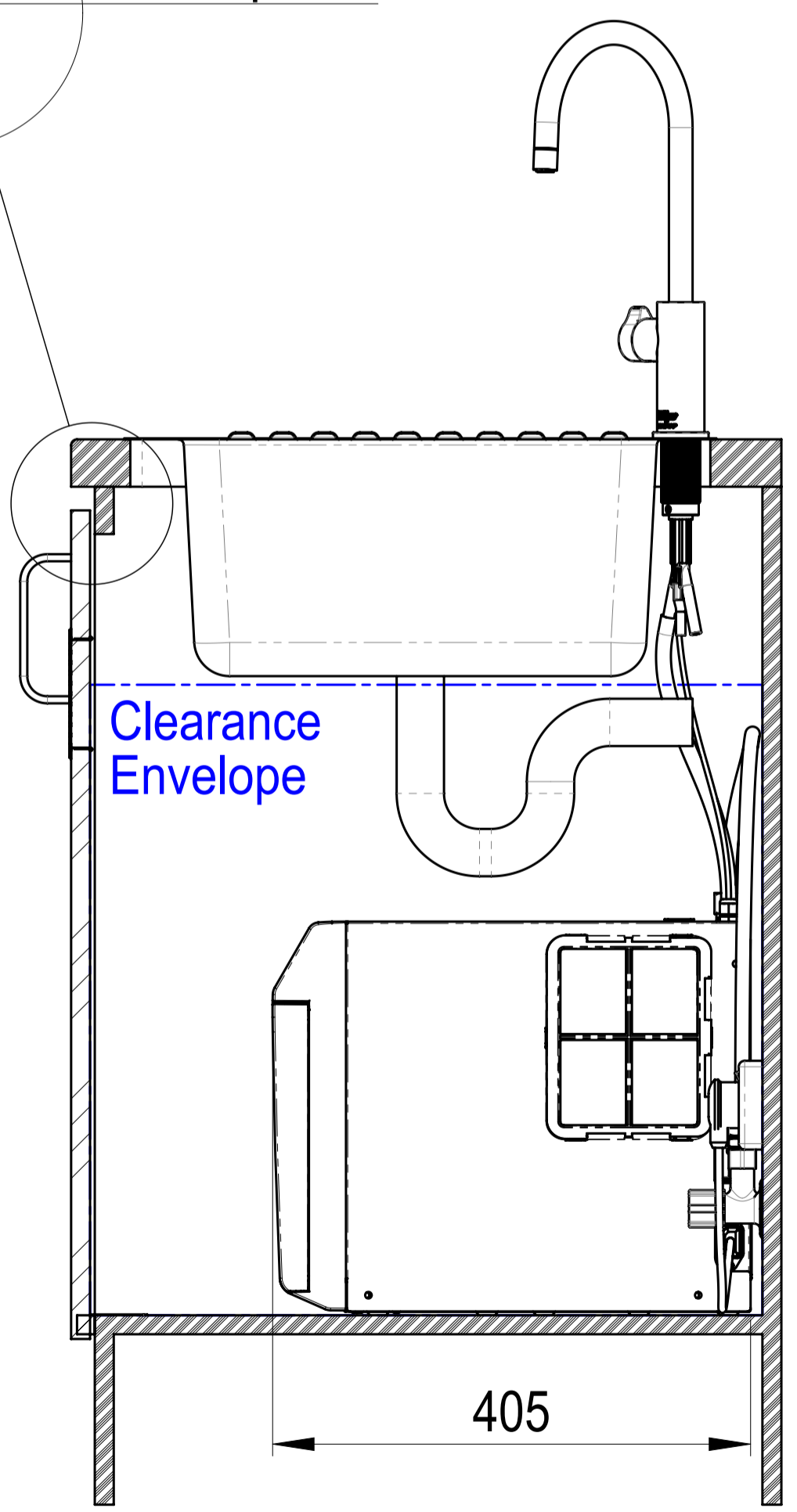
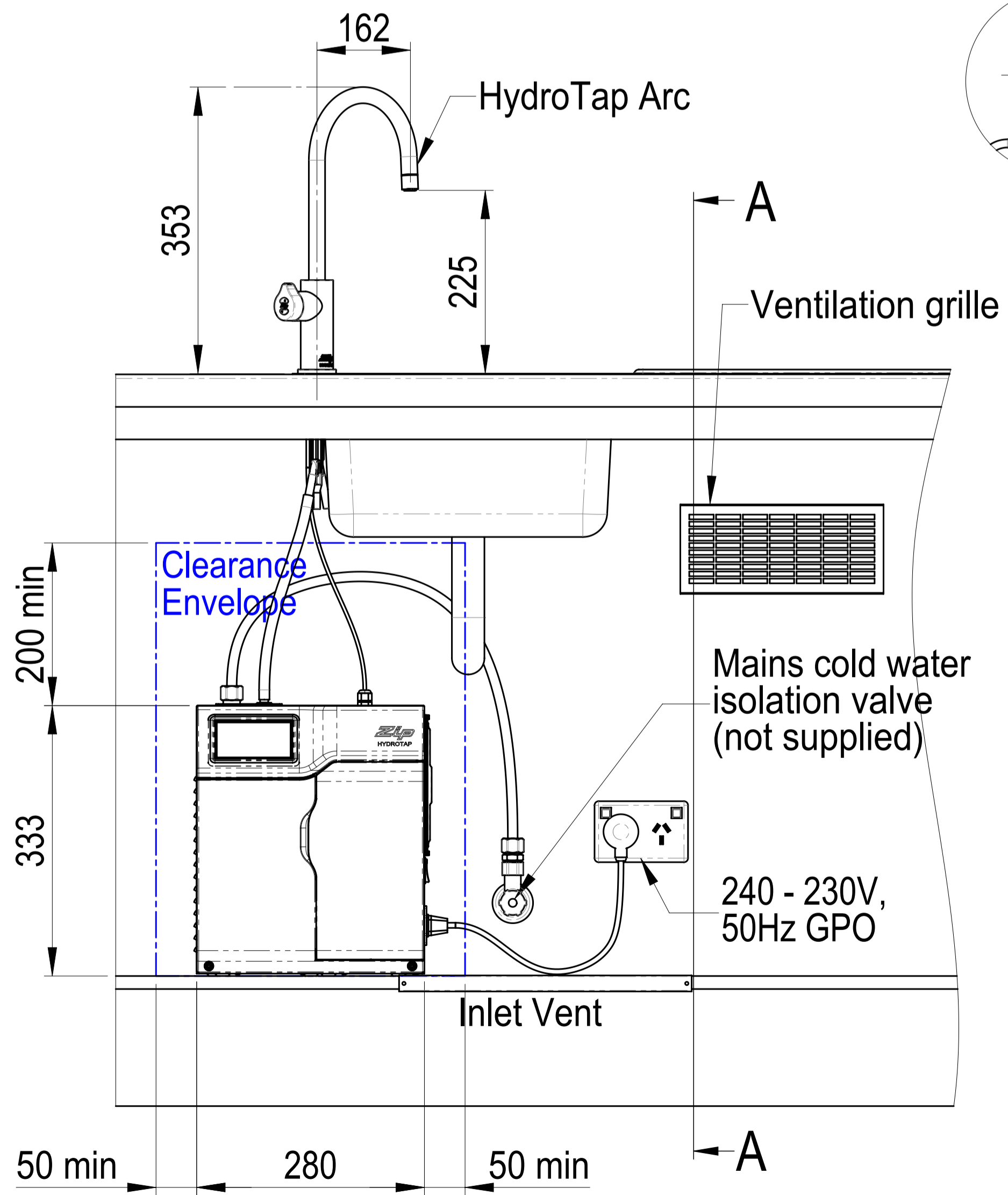
4 min. Buffer Pad Air Space



Cutting Detail for HydroTap Arc & HydroTap Cube with Font

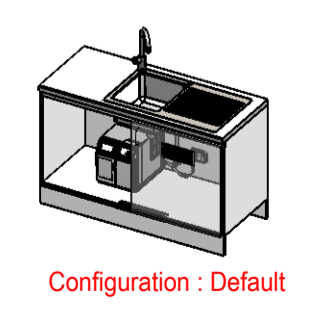


Cutting Detail for Elite Tap with Font



SECTION A-A
 SCALE 1 : 5

This set-up is applicable to:
 C Residential:
 HT2788: 0014AU0T0ZN1R w/ HydroTap Arc Tap
 HT3788: 0014AU0U0ZN1R w/ HydroTap Cube Tap
 HT4788: 0014AU0E3ZN1R w/ Elite Tap



Configuration : Default

<p>This drawing is CONFIDENTIAL, and is issued on the express condition that it shall not be LOANED, COPIED or DISCLOSED to any other third party or used for any purpose without the written consent of Zip Industries Pty Ltd. This document is printed in hardcopy form. It is for INFORMATION ONLY and therefore not subject to updating controls. For the current revision ALWAYS refer to the MATRICE document form as stated in the top left hand corner of this sheet. © copyright Zip Industries Pty Ltd. 16/05/2011</p>		<p>Approved by: edgag on 14/12/2010 Checked by: edgag on 20/04/2016 Updated by: edgag on 20/04/2016 9:07:59 AM</p>		<p>Description: Assy - Kitchen Layout (HydroTap G4 Residential C Unit & HydroTap Arc, Cube & Elite Taps Upgraded)</p>	
<p>Make or Buy: Buy Manufacturing Route: Manufacturing Process Raw material: See Components</p>		<p>Material: See Components Finish: Edges: on 16/05/2011</p>		<p>Project: HydroTap G4B Configuration: Default Created by & on: Edgag on 4/05/2011 Created by & on: Edgag on 16/05/2011 Rev: 03</p>	
<p>Remove all sharp edges. This drawing ONLY details information which cannot be ascertained from the 3D geometry of the part(s) attached. Model & dimensions are AFTER all finishing operations.</p>		<p>Volume: 62326.9 Area: 164206.3 Mass: 98288.5 Density: 1.2</p>		<p>Colour: Colourless Derived from: New Scale: 1:1 Sheet: 1 of 1</p>	
<p>Probab? NO Recyclable? NO Handled? NO</p>	<p>Mass: 98288.5 Density: 1.2</p>		<p>Colour: Colourless Derived from: New Scale: 1:1 Sheet: 1 of 1</p>		<p>Status: Pending Pre-Production Drawing Property: Config Property: Custom Property:</p>