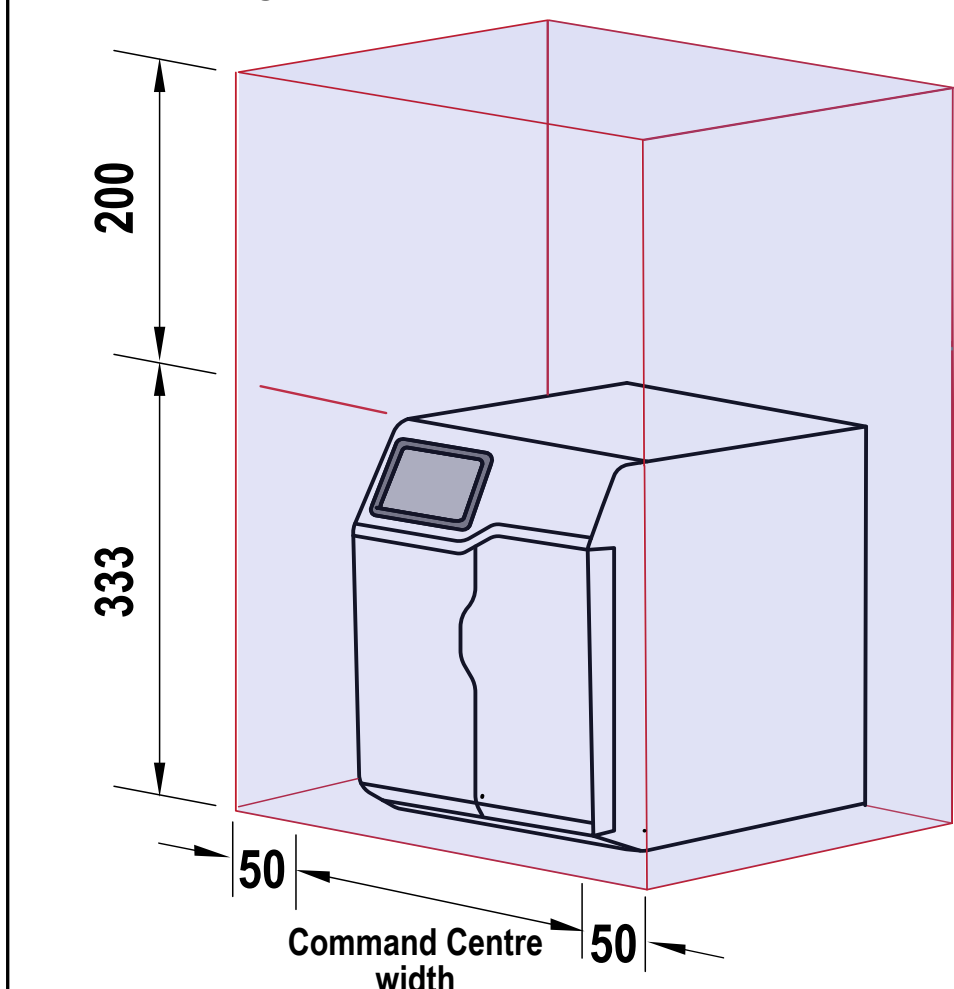


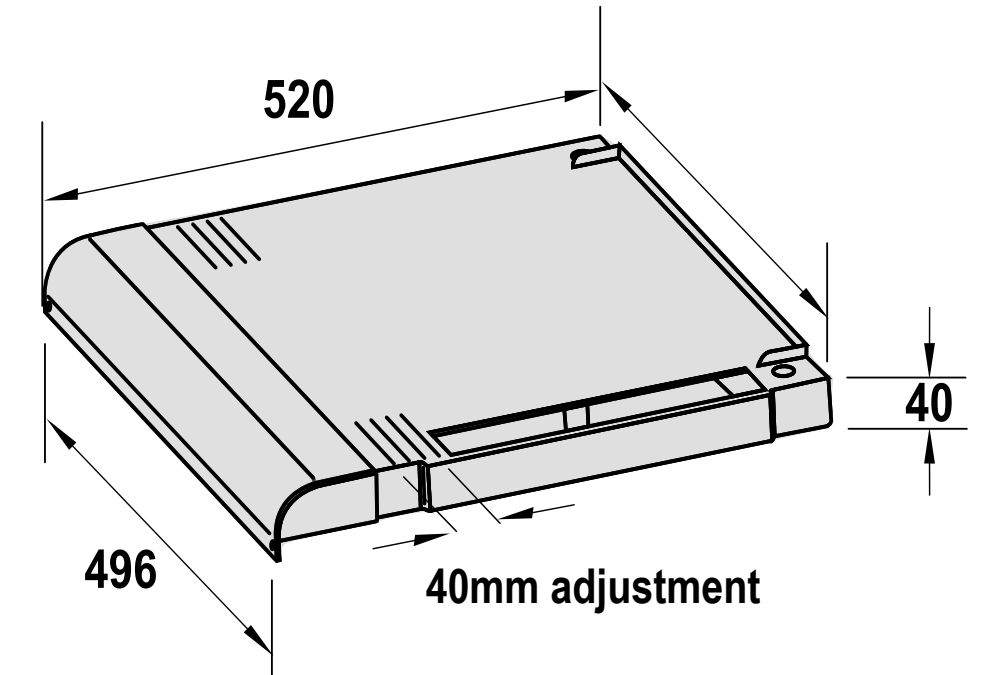
**Ventilation requirements** Contact your local service provider if ventilation is not suitable

**Clearance envelope**

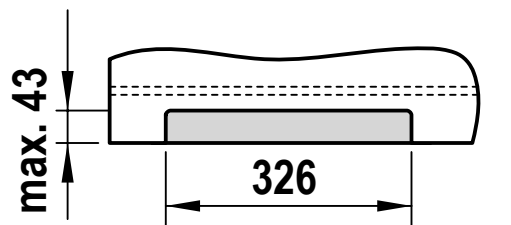
Position the Tap and the Command Centre as close together as possible.



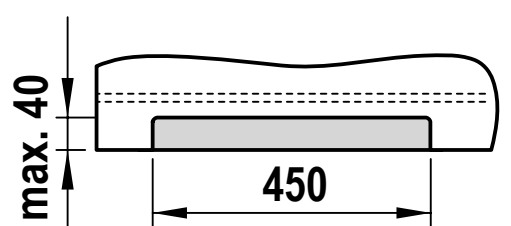
**Vent tray (kit no. 93540)**



**Detail A. Air inlet grille**  
Cut-out in cabinet floor



**Detail B. Vent Tray air outlet**  
Cut-out in cabinet floor

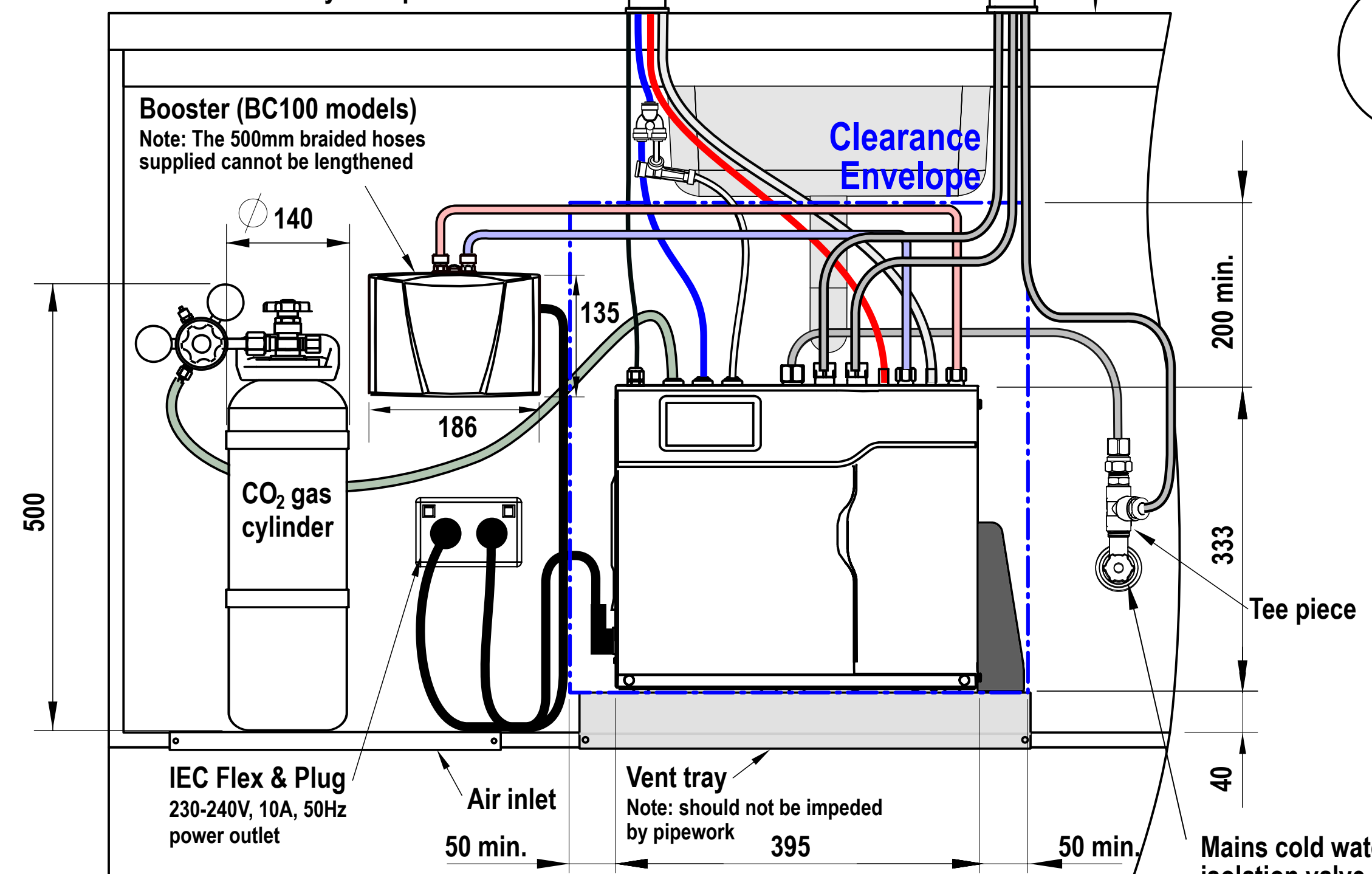
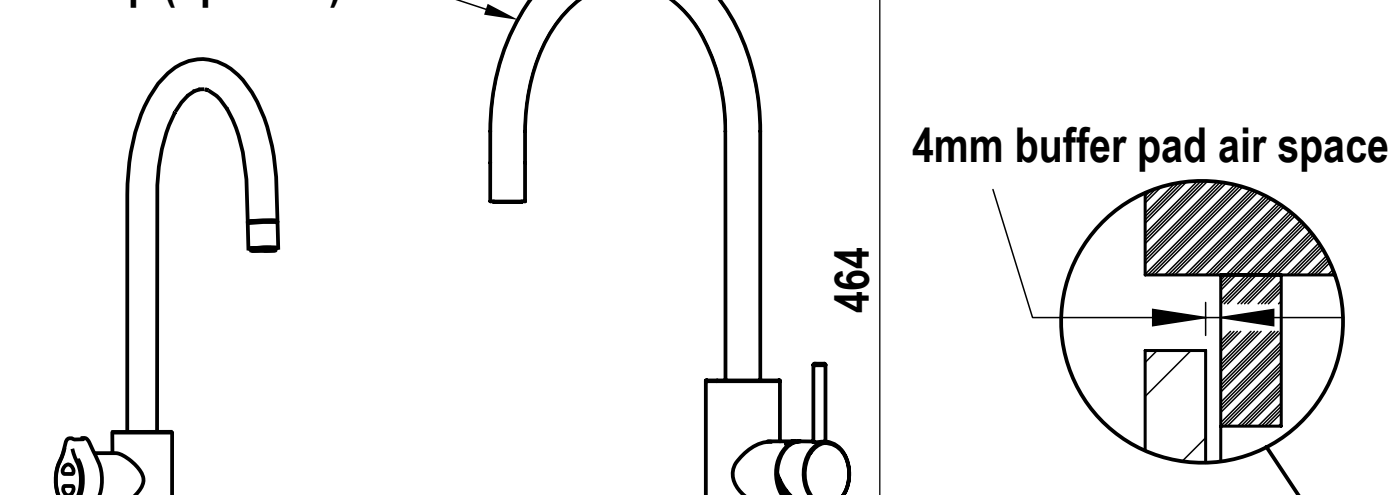


**Tap Positioning**

Position the Tap to dispense into the sink, allowing clearance for a cup or teapot. Alternatively, mount on a Font (available as an accessory).

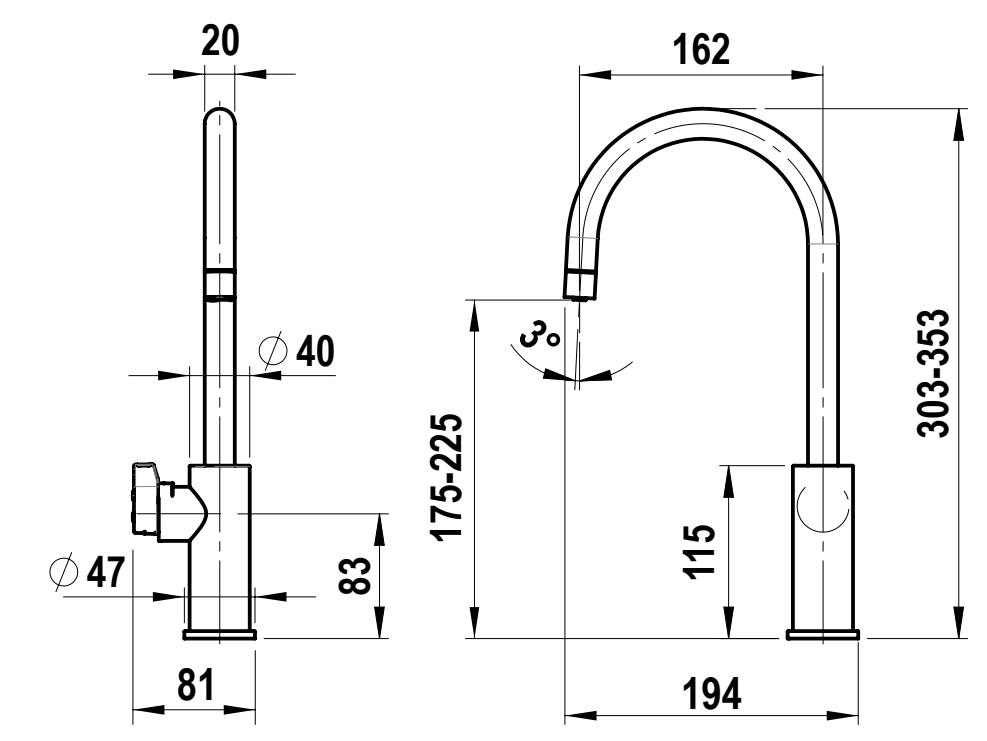


**Vented Arc Mixer Tap (optional)**

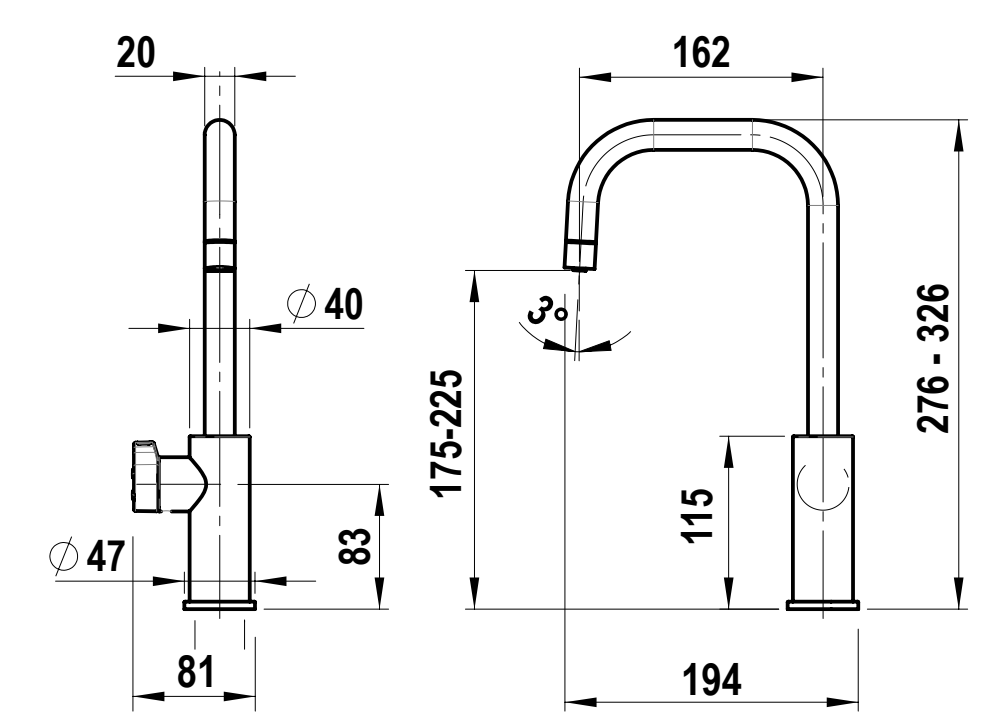


**HydroTap Tap options**

**HydroTap Arc Tap**

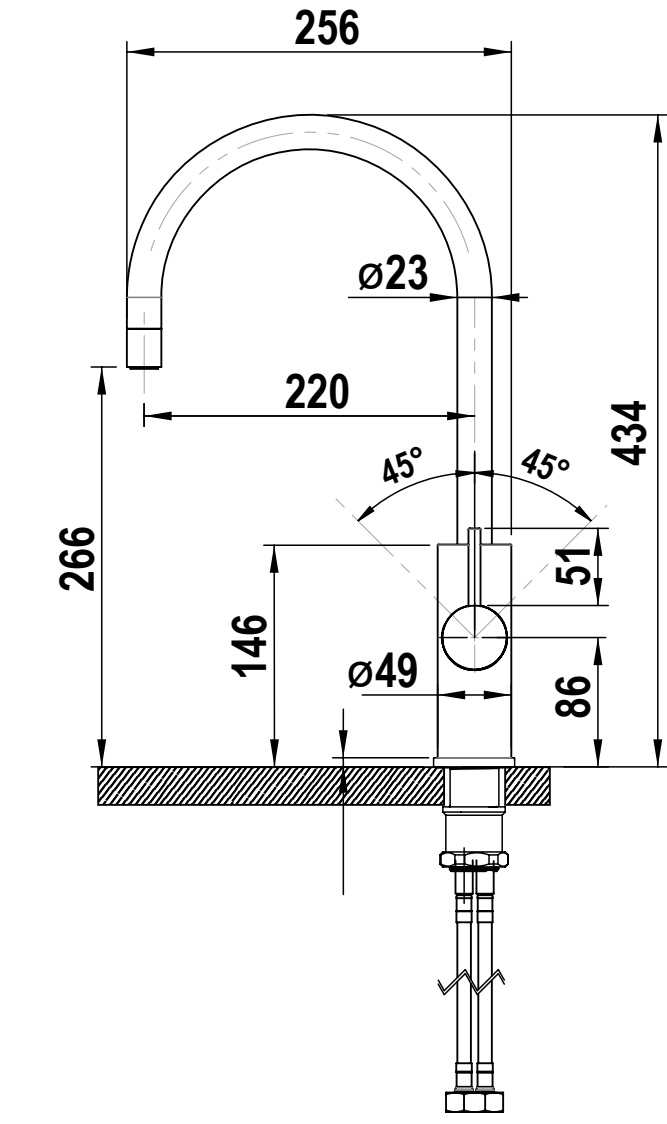


**HydroTap Cube Tap**

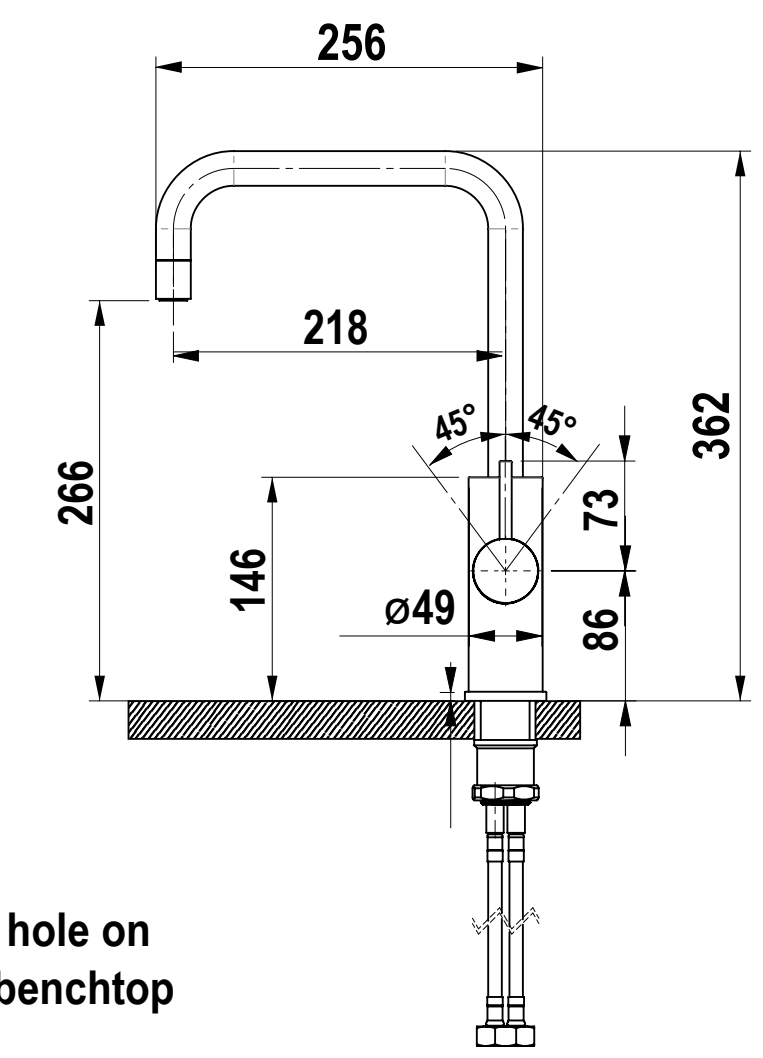


**Mixer Tap options**

**Arc Mixer Tap**

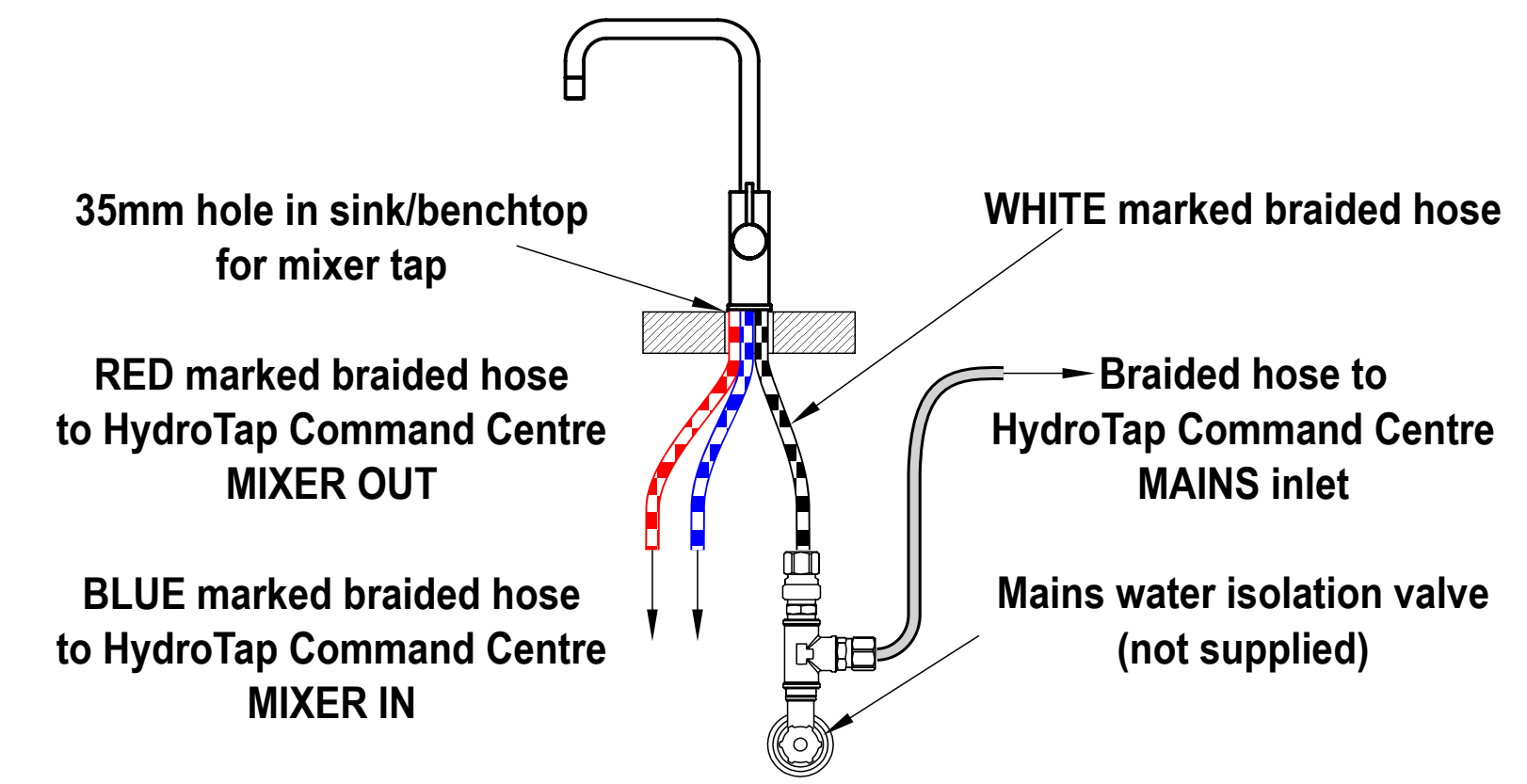


**Cube Mixer Tap**



**Vented mixer tap installation**

Only cold water supply required



**HydroTap G5**  
**BCS60 H, BCS100 H**

shown with HydroTap Arc  
shown with Arc Mixer Tap (V)