

Sheet1 (Default)

Table - Zip BOM (Assembly)							
Item	Part	Rev	Description	Config	Status	Qty	Notes
1	A2402	A	Assy - Kitchen Cupboard (Generic)	LH & RH Taps	Production	1	
2	875701	A	Assy - Tap (4 in 1)	Hot Off	Production	1	
3	83453	A	Assy - Pressure Limiting Assembly FM600	Default	Production	1	
4	76121	A	Assy - Chill Tap Domestic FXV U/Sink	Default	Production	1	
5	800426	A	Description (Assembly)	Default	Production	1	
6	8003321	A	Filter Cartridge	800332	Production	1	
7	8000211	A	Assy - Ceramic Disc Tap Vented Chilltap	Default	Production	1	

Limits unless otherwise stated:		Surface finishes unless otherwise stated:	
1. Fabricated	: 0.75	1. Hand-Cast	= 16.0µm
2. Forging	: 0.35	2. Drilling	= 6.3µm
3. Die-Cast	: 0.25	3. Forging	= 6.3µm
4. Moulded	: 0.15	4. Milling	= 3.2µm
5. Machined	: 0.25mm	5. Turning	= 3.2µm
6. Machined	: 0.25mm	6. Boring	= 3.2µm
7. Angular	: 0.50degrees	7. Die-Cast	= 1.6µm

THIRD ANGLE PROJECTION

Dimensions in millimetres
Drawing to BS8888:2004
Screw threads to BS 8458:2008

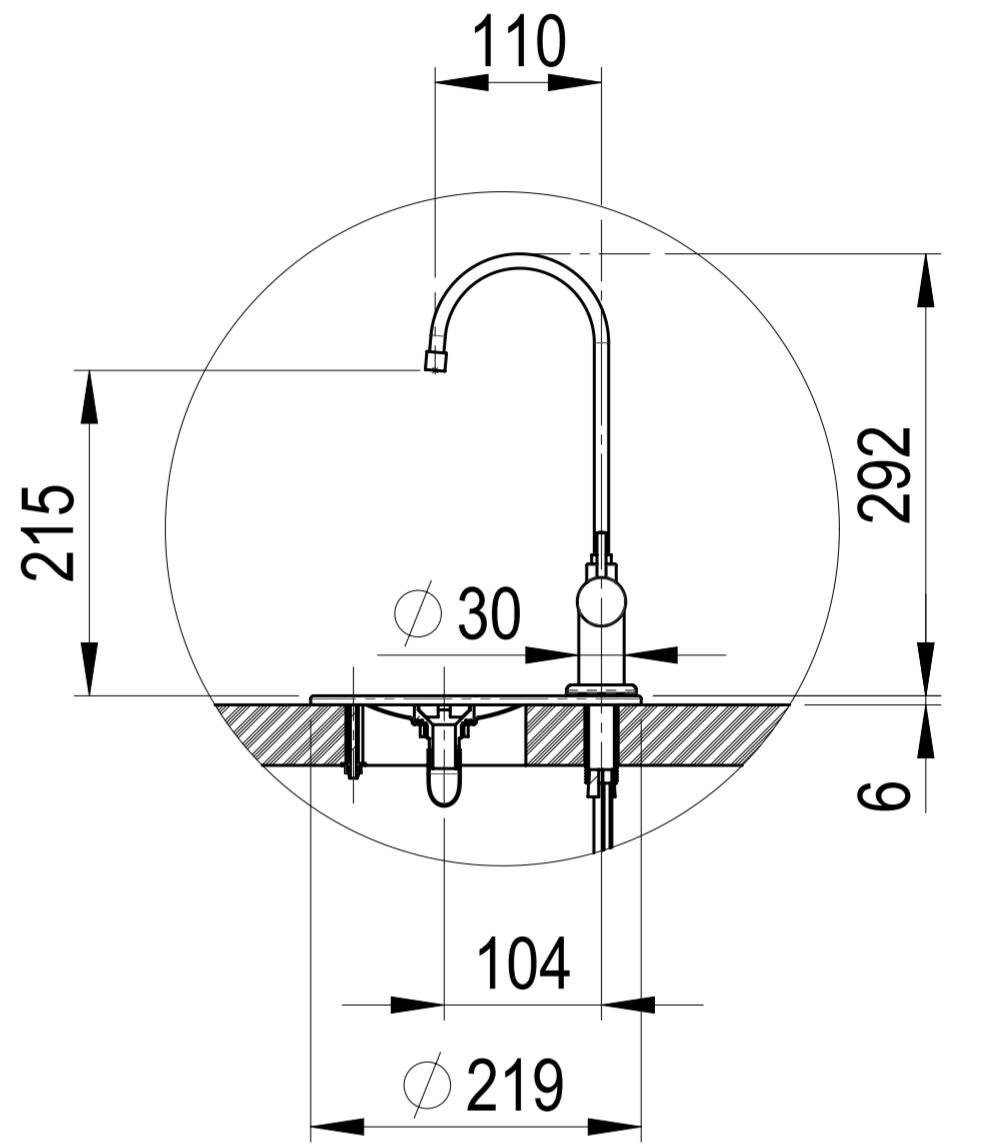
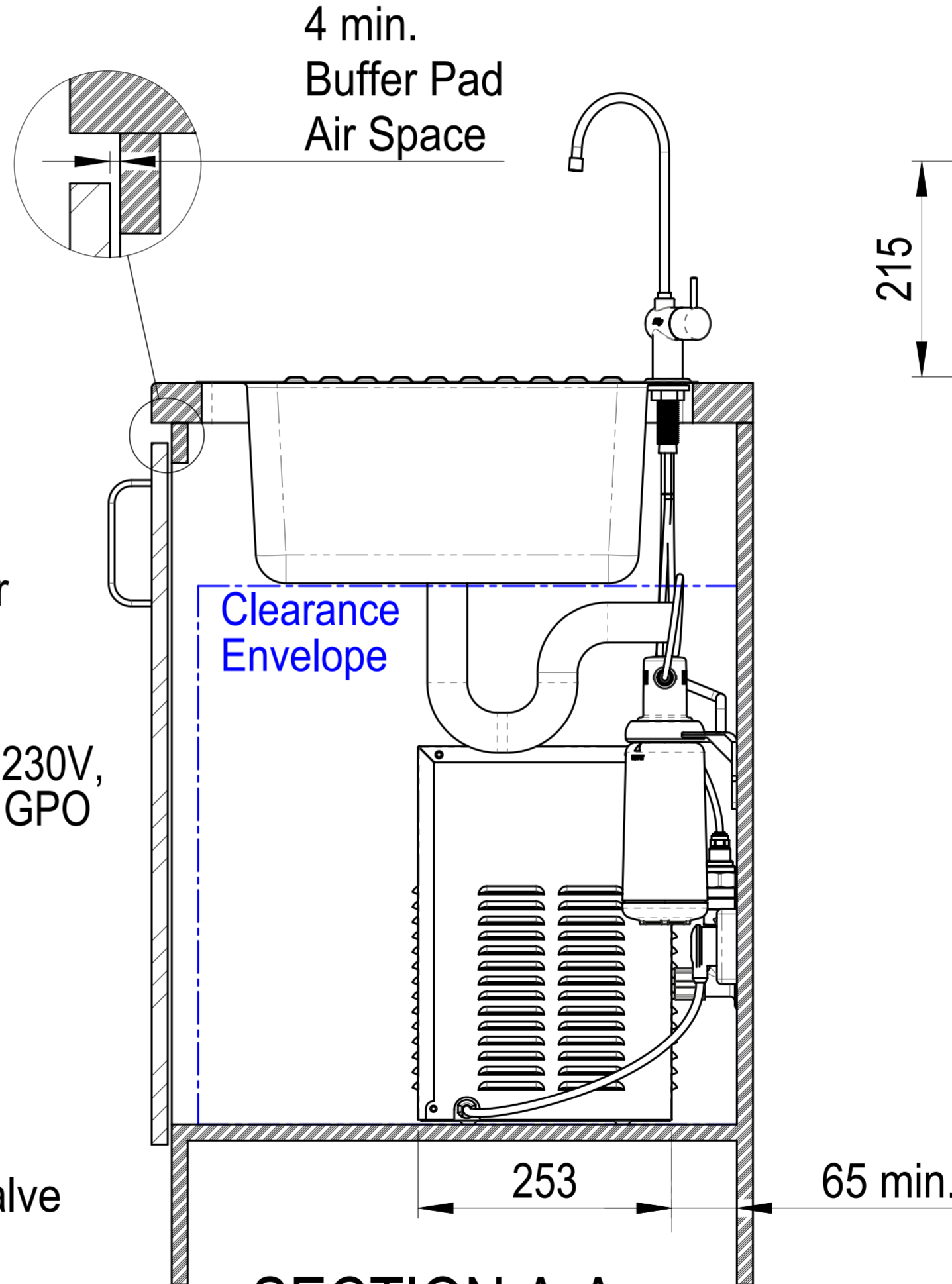
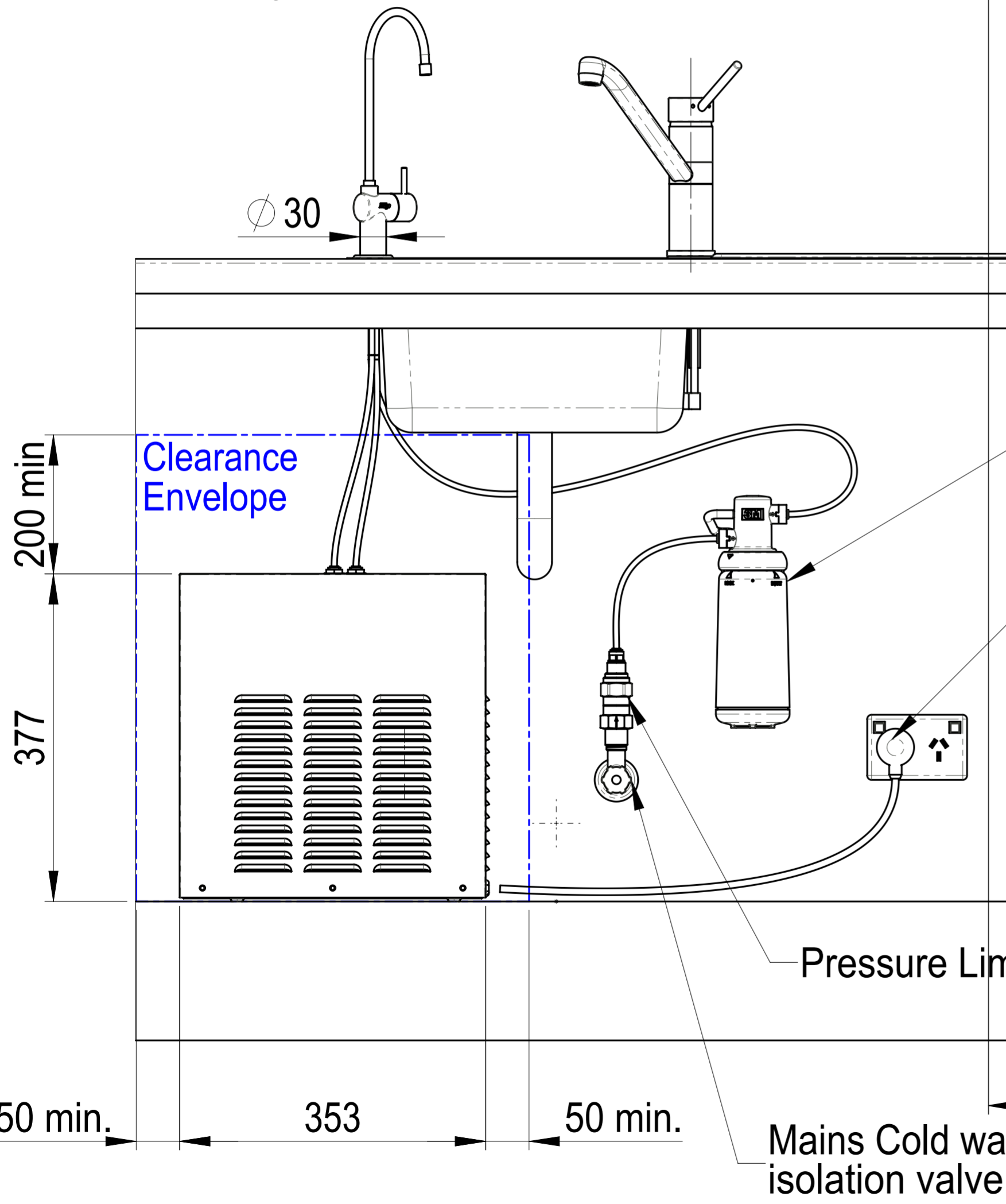
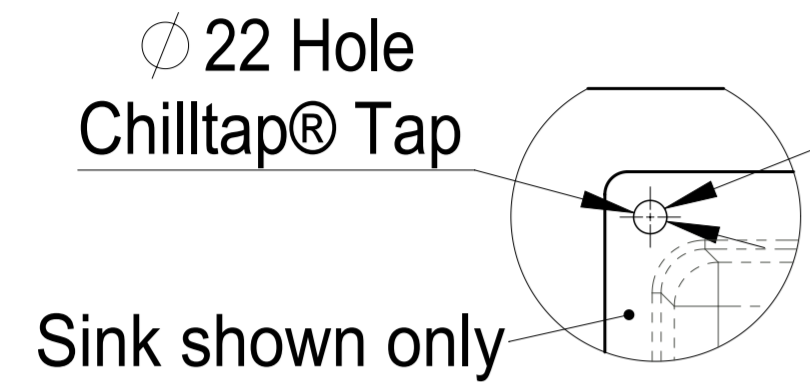
Zip Industries Pty Ltd
67 Allingham Street
Condell Park
Sydney
NSW 2200
Australia

Web: www.zipindustries.com
Email: sales@zipindustries.com

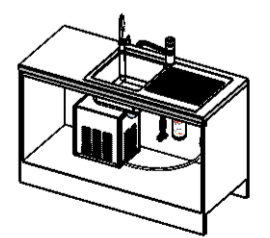
Features marked with this symbol: **XXX.XX** must be referred to in the manufacturing control plan

REVISIONS					
Rev	XXXX YYYY	Last Change(s)	ECO	Date	By
A		First Issue	0000	8/06/2011	ME

Position the Tap such that it dispenses into the sink bowl with ample clearance for a cup or a carafe. Alternatively, the Tap could be mounted away from the sink using a Zip Font available as an accessory.



DETAIL FONT
SCALE 1 : 5



Configuration : Default

This drawing is CONFIDENTIAL and is supplied on the express condition that it shall not be LOANED, COPIED or DISCLOSED to any other third party or used for any purpose without the written consent of Zip Industries Pty Ltd. If this document is printed in hardcopy form, it is for INFORMATION ONLY and therefore not subject to updating controls. For the current revision ALWAYS refer to the NATIVE electronic form as stated in the top left-hand corner of this sheet. © copyright Zip Industries Pty Ltd, 16/05/2011

Zip Industries **Zip**

Manufacturing Instructions		Approved by : Unapproved on 1/03/2011	Description : Assy - Kitchen Layout Chill Tap Extra - Residential
Make or Buy : Make	Checked by : Unchecked on 1/01/2001	Updated by : edgar on 17/06/2014 11:39:48 AM	Project : Chilltap
Manufacturing Route : Manufacturing Process	Material : Material <not specified>	Model : KL003_76121	Configuration : Default
Raw material : Raw Material	Finish : KL003_76121	Created by & on : EdG on 4/05/2011	Created by & on : EdG on 16/05/2011
Remove all sharp edges. This drawing ONLY details information which cannot be ascertained from the 3D geometry of the parts attached. Model & dimensions are AFTER all finishing operations.	Comments :	Volume (m³) : 83519.39	Area (m²) : 114305.48
Derived from : New	Scale : 1:1	Sheet : 1 of 1	Colour : Colourless
Potable? No	Recyclable? No	Handed? ERROR!Hand ed Part?	Status : Prototype
Volume (m³) : 83519.39	Area (m²) : 114305.48	Derived from : New	Scale : 1:1
Volume (m³) : 93093.96	Density (g/cm³) : 1.11	Scale : 1:1	Sheet : 1 of 1
Volume (m³) : 93093.96	Density (g/cm³) : 1.11	Scale : 1:1	Sheet : 1 of 1

ERROR!Approval Number
ERROR!Approval Expiry Date