

Table - Zip BOM (Assembly)

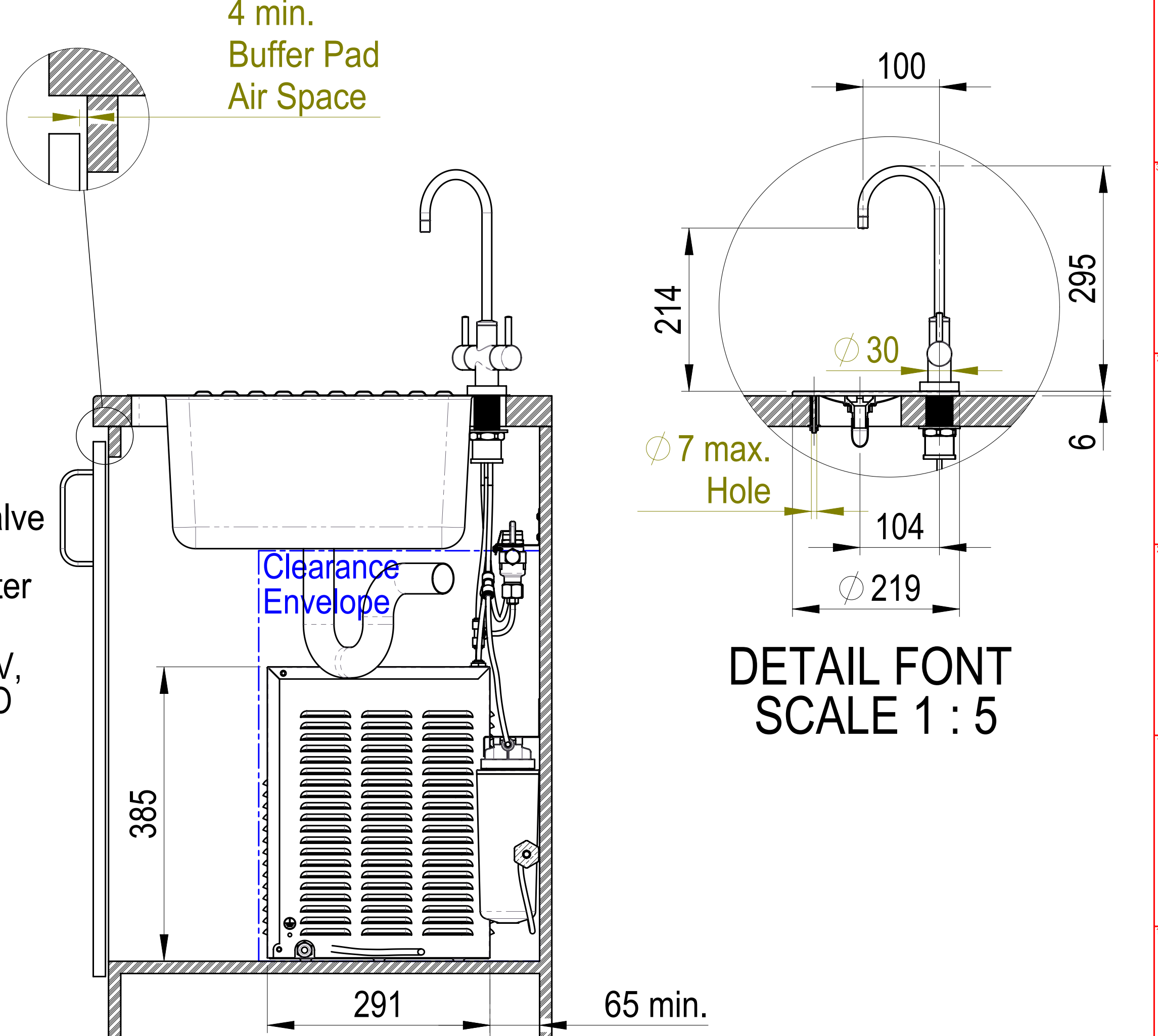
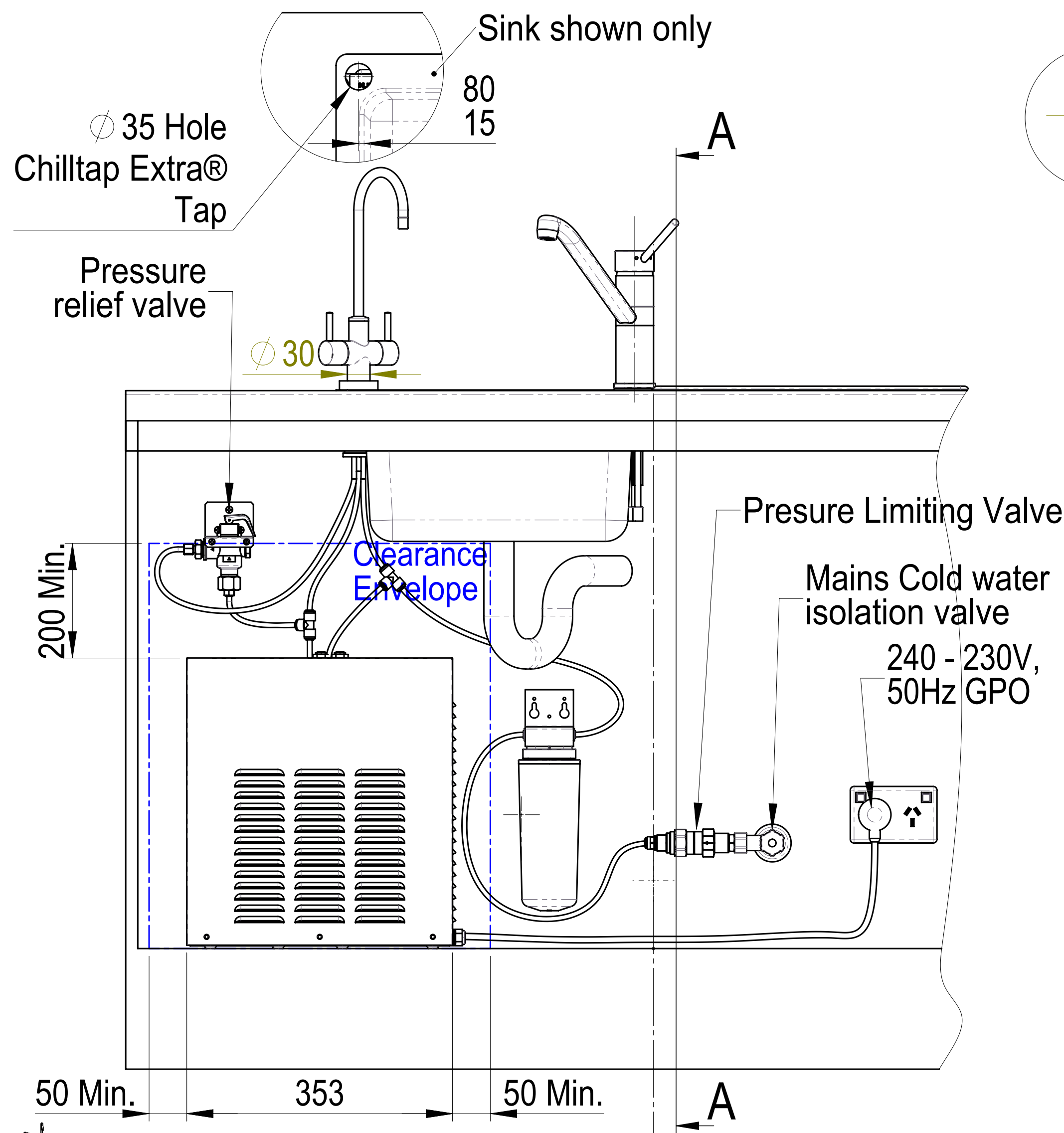
Item	Part	Rev	Description	Config	Status	Qty	Notes
1	A2402	A	Assy - Kitchen Cupboard (Generic)	LH & RH Taps	Production	1	
2	875701	A	Assy - Tap (4 in 1)	Hot Off	Production	1	
3	83453	A	Assy - Pressure Limiting Assembly FM600	Default	Production	1	
4	80762	A	SMP Filter Head Assy W/Fittings	Default	Production	1	
5	80767	A	Cartridge Filter T/A WB 5 Star	Default	Production	1	
6	83718	A	Bracket Filter Single	Default	Production	1	
7	89446	A	Tap - Chilltap Extra (Vented)	Default	Production	1	
8	89635	A	Chilltap Extra PRV Assy	Default	Production	1	
9	83908	A	Tee 1/4" x 1/4" JG	Default	Production	2	
10	63009	A	140 Glass/Hr Filr UCCT28FTV Chilltap Extra	63009	Production	1	

Limits unless otherwise stated: 1. Fabricated : 0.75 2. Sand-Cast : 0.35 3. Forging : 0.25 4. Die-Cast : 0.25 5. Moulded : 0.15 6. Machined : 0.25mm 7. Angular : 0.50degrees Fit unless otherwise stated: 1. Free Running = H9/d9 2. Running = H8/f8 3. Clearance = H7/g6 4. Sliding = H7/g6 5. Interference = H7/g6	Surface finishes unless otherwise stated: 1. Sand-Cast = 16.0um 2. Drilling = 6.3um 3. Forging = 6.3um 4. Milling = 3.2um 5. Turning = 3.2um 6. Boring = 3.2um 7. Die-Cast = 1.6um 8. Peaming = 1.6um 9. Stranding = 0.9um 10. Honing = 0.4um 11. Polishing = 0.2um	Dimensions in millimetres Drawing to BS8888:2004 Screw threads to BS 8498:2008 Zip Industries Pty Ltd 67 Allingham Street Condell Park Sydney NSW 2200 Australia Web: www.zipindustries.com Email: sales@zipindustries.com
--	---	--

THIRD ANGLE PROJECTION

Features marked with this symbol: must be referred to in the manufacturing control plan

REVISIONS					
Rev	XXXX YYYY	Last Change(s)	ECO	Date	Init
A		First Issue	0000	8/06/2011	ME



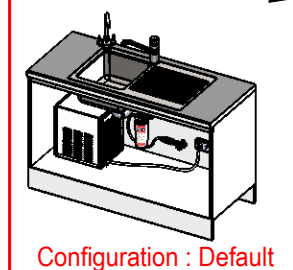
DETAIL FONT SCALE 1 : 5

SECTION A-A SCALE 1 : 5

This drawing is CONFIDENTIAL and is supplied on the express condition that it shall not be LOANED, COPIED or DISCLOSED to any other third party or used for any purpose without the written consent of Zip Industries Pty Ltd. If this document is printed in hardcopy form, it is for INFORMATION ONLY and therefore not subject to updating controls. For the current revision ALWAYS refer to the NATIVE electronic form as stated in the top left-hand corner of this sheet. © copyright Zip Industries Pty Ltd, 16/05/2011

Zip Industries

Manufacturing Instructions		Approved by : Unapproved on 1/03/2011	Description : Assy - Kitchen Layout Chill Tap Extra - Commercial
Make or Buy : Make	Checked by : Unchecked on 1/01/2001	Updated by : edgar on 11/02/2013 2:30:23 PM	Project : Hydrotap®
Manufacturing Route : Manufacturing Process	Raw material : Raw Material	Material : Material <not specified>	Configuration : Default
Remove all sharp edges. This drawing ONLY details information which cannot be ascertained from the 3D geometry of the parts attached. Model & dimensions are AFTER all finishing operations.	Finish : Finish	Model : KL003_63009	Created by & on : EdgarG on 4/05/2011
Comments :	Volume (mm³) : 83005.29	Area (mm²) : 120960.64	Derived from : New
Comments :	Weight (kg) : 93253.98	Density (g/mm³) : 1.12	Scale : 1:1
Potable? No	Recyclable? No	Handed? ERROR! Hand ed Part?	Sheet: 1 of 1
Status: Prototype		Colour: Colourless	Size: A2
Created by & on : Engineer on 16/05/2011	Rev : A	Part Property	Part Property



Configuration : Default

ERROR! Approval Number
ERROR! Approval Expiry Date