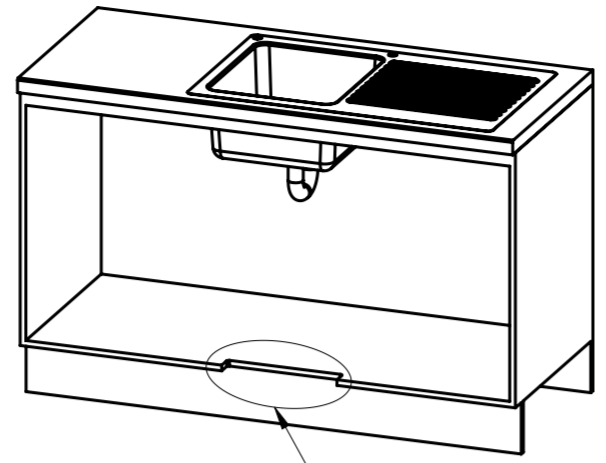


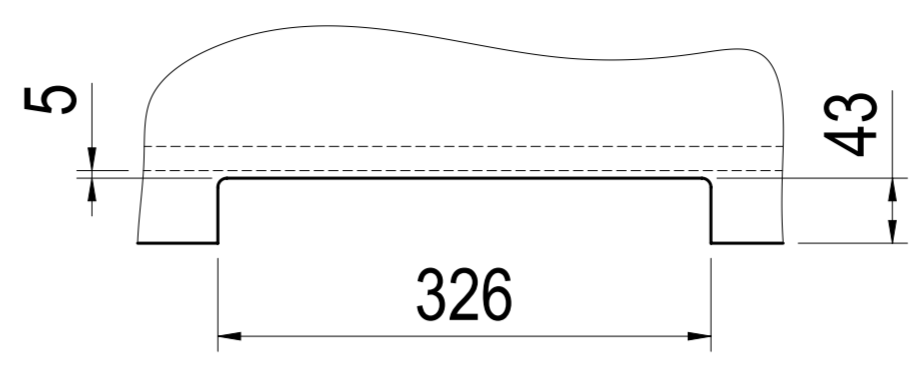
Table - Zip BOM (Assembly)

Item	Part	Description	Qty
1	800063	Carafe Tap CSp Stainless Steel	1
3	30216	Base Module CS ChillTap Sparkling Commercial G4	1
4	804263	Carbonation Adjustment Valve	1
5	93223	Kit CO2 - 2.5kg Gas (new)	1
16	800220	Kickboard Fan Grill	1
17	800221	Air Inlet Grill CFF	1

Position the Tap such that it dispenses into the sink bowl with ample clearance for a cup or a carafe. Alternatively, the Tap could be mounted away from the sink using a Zip Font available as an accessory.



See Detail A



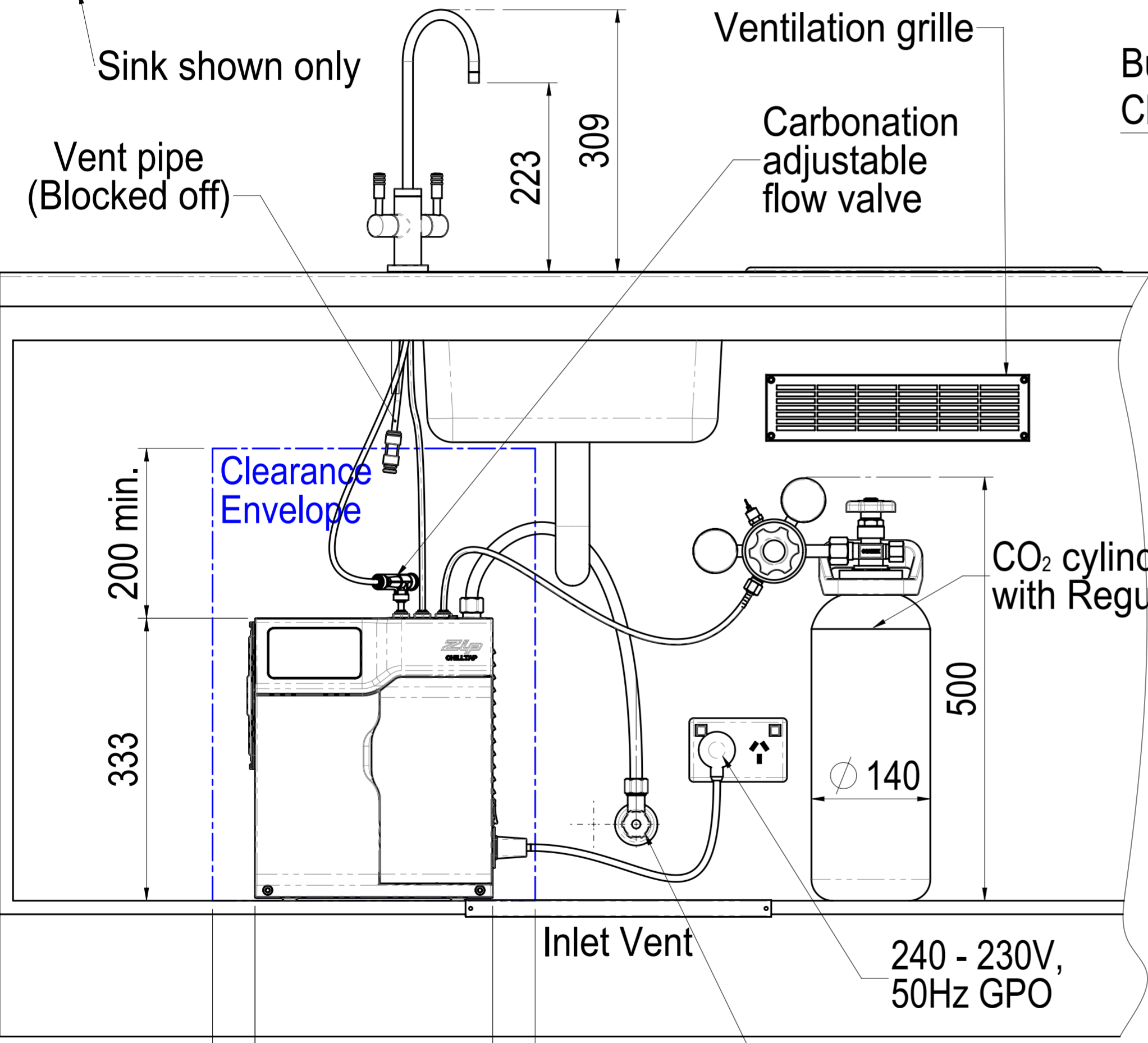
DETAIL A
SCALE 1 : 5

<p>Limits unless otherwise stated:</p> <ol style="list-style-type: none"> Fabricated : 0.75 Sand-Cast : 0.35 Forging : 0.25 Die-Cast : 0.25 Moulded : 0.15 Machined : 0.25mm Angular : 0.50degree <p>Fits unless otherwise stated:</p> <ol style="list-style-type: none"> Free Running = H9/d9 Running = H8/f8 Clearance = H7/h6 Sliding = H7/g6 Interference = H7/k6 	<p>Surface finishes unless otherwise stated:</p> <ol style="list-style-type: none"> Sand-Cast = 16.0µm Drilling = 6.3µm Forging = 6.3µm Milling = 3.2µm Turning = 3.2µm Boring = 3.2µm Die-Cast = 1.6µm Reaming = 1.6µm Grinding = 0.8µm Honing = 0.4µm Polishing = 0.2µm 	<p>Dimensions in millimetres</p> <p>Zip Industries Pty Ltd 67 Allingham Street Condell Park Sydney NSW 2200 Australia</p> <p>Web: www.zipindustries.com Email: sales@zipindustries.com</p>
---	--	--

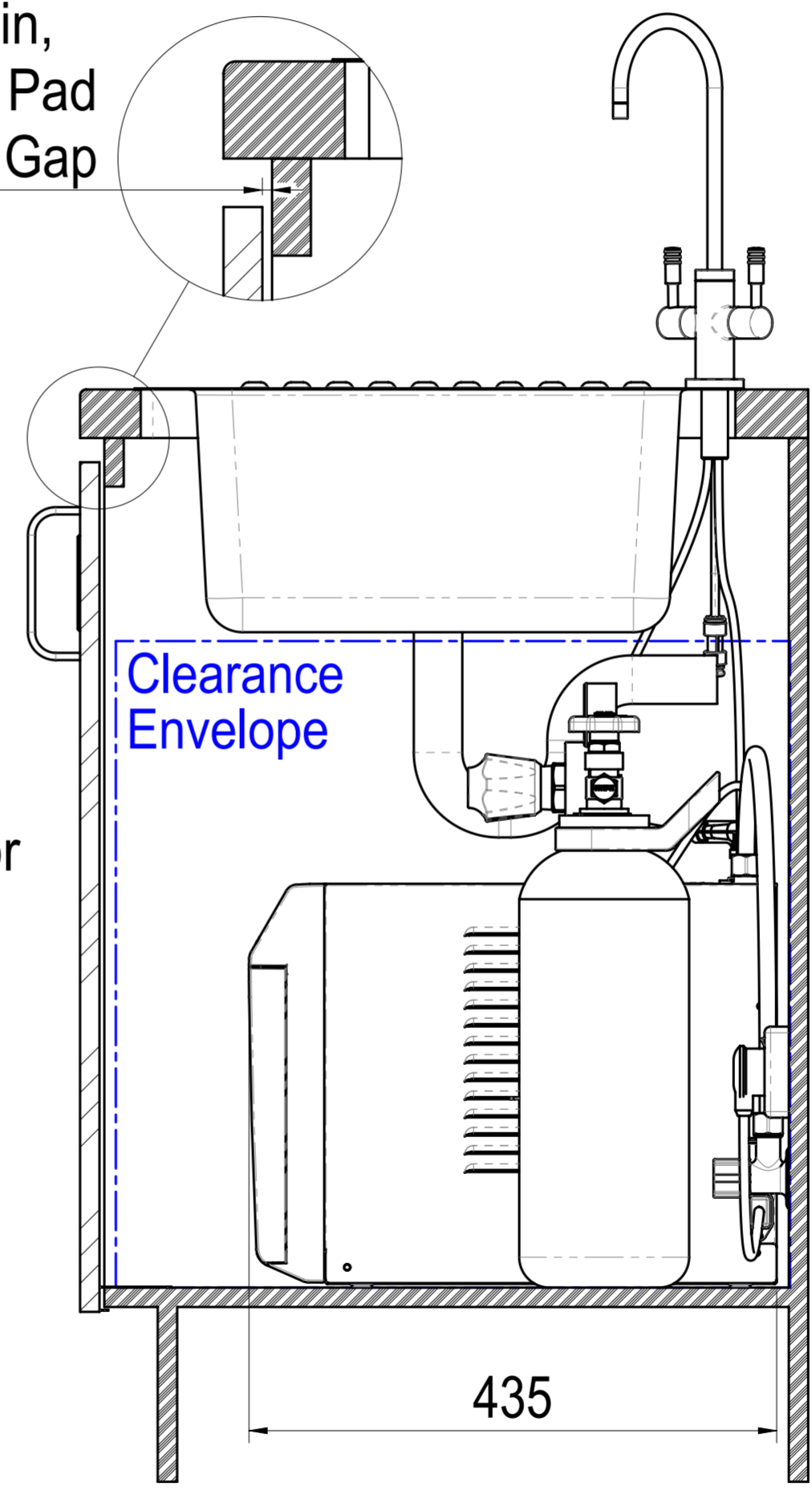
REVISIONS

Rev	XXXX YYYY	Last Change(s)	ECO	Date	Int
A		First Issue	0000	8/06/2011	MM

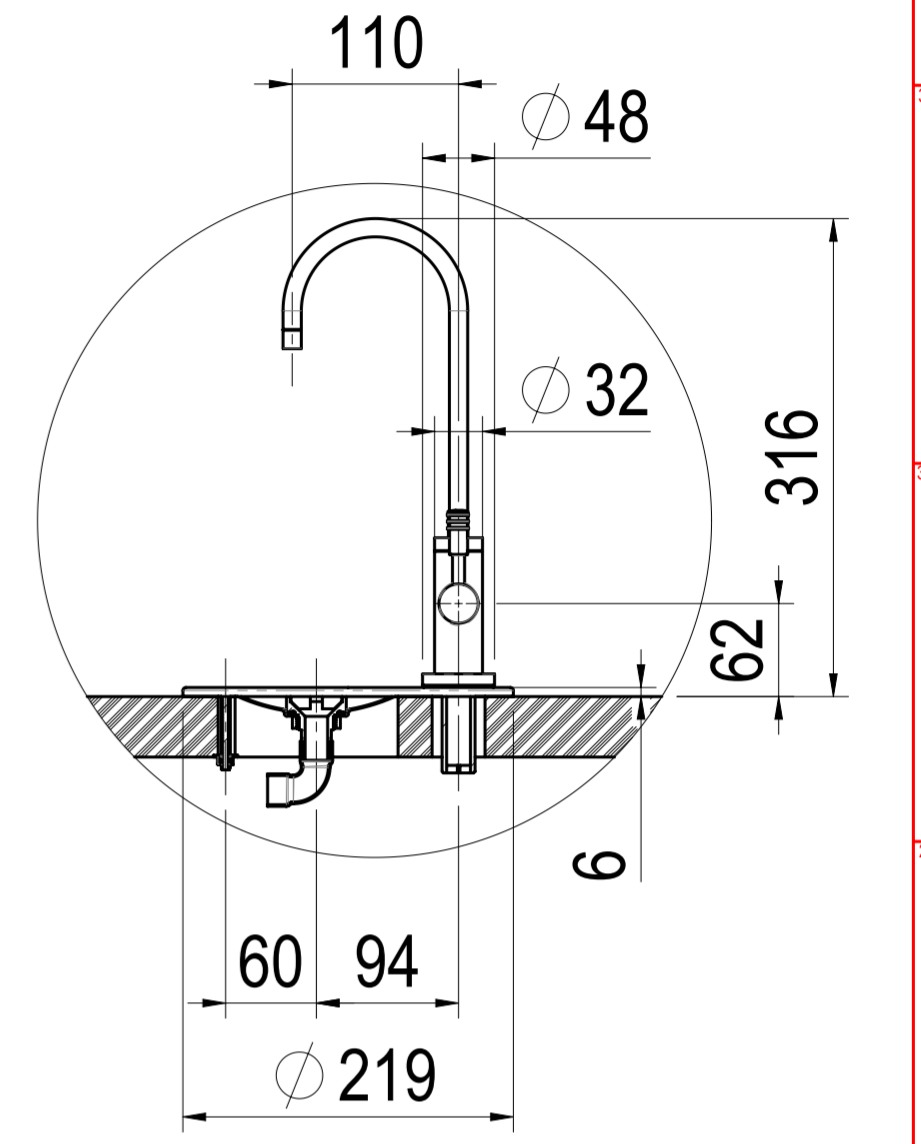
Ø 22 Hole for ChillTap Sparkling Tap



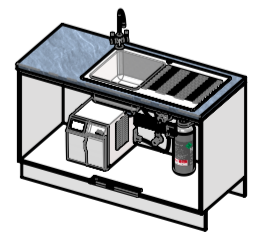
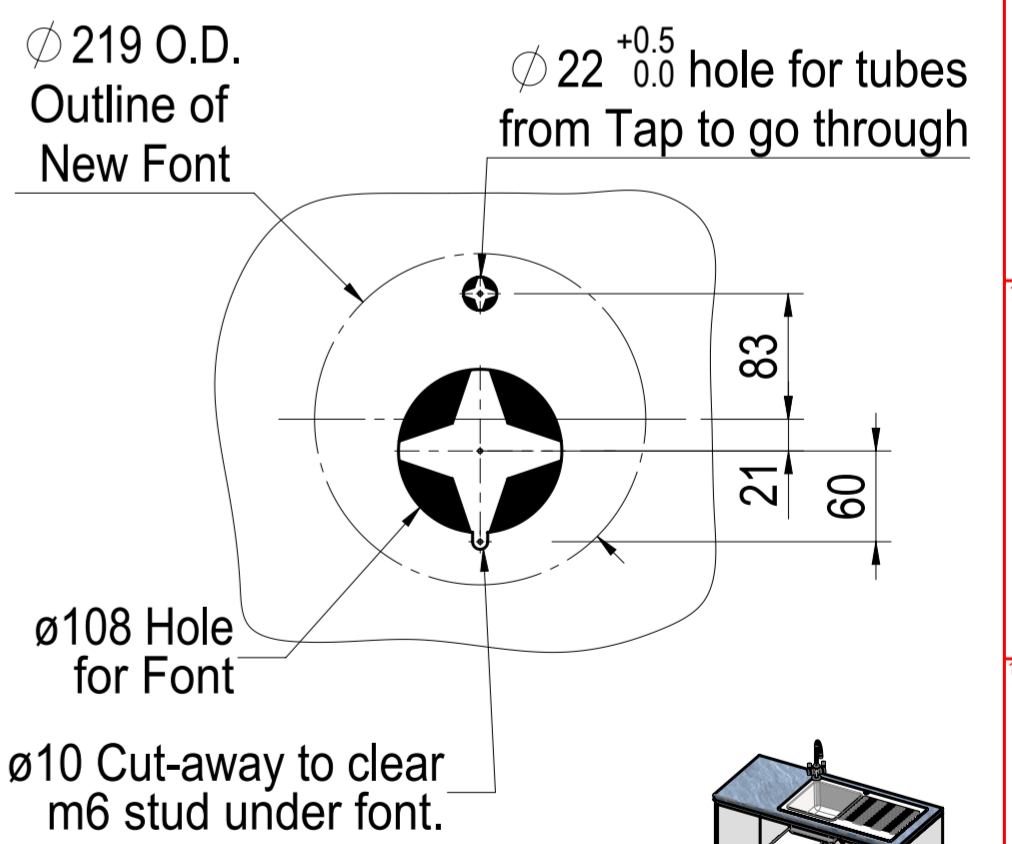
4 min, Bufer Pad Clear Gap



SECTION A-A
SCALE 1 : 5



DETAIL FONT
SCALE 1 : 5



Configuration : Default

This drawing is CONFIDENTIAL and is supplied on the express condition that it shall not be LOANED, COPIED or DISCLOSED to any other third party or used for any purpose without the written consent of Zip Industries Pty Ltd. If this document is printed in hardcopy form, it is for INFORMATION ONLY and therefore not subject to updating controls. For the current revision ALWAYS refer to the NATIVE electronic form as stated in the top left-hand corner of this sheet. © copyright Zip Industries Pty Ltd, 16/05/2011

<p>Manufacturing Instructions</p> <p>Make or Buy : Buy</p> <p>Manufacturing Route : Manufacturing Process</p> <p>Raw material : See Components</p> <p>Remove all sharp edges. This drawing ONLY details information which cannot be ascertained from the 3D geometry of the parts attached. Model & dimensions are AFTER all finishing operations.</p> <p>Comments : Converted by nickm @ 05/04/2012 18:22:05</p>	<p>Approved by : Unapproved on 10/3/2011</p> <p>Checked by : Unchecked on 10/1/2001</p> <p>Updated by : edgar on 21/09/2016 10:38:10 AM</p> <p>Material : See Components</p> <p>Finish : See Components</p> <p>Volume (mm³) : 8882.1</p> <p>Area (mm²) : 158220.6</p> <p>Mass (kg) : 105275.9</p> <p>Density (g/mm³) : 12</p>	<p>Description : ChillTap Sparkling Commercial G4 Style</p> <p>Project : ChillTap 2016</p> <p>Model : KL003_30216</p> <p>Project : KL003_30216</p> <p>Configuration : Default</p> <p>Created by & on : Edgarg on 4/05/2011</p> <p>Created by & on : Engineer on 16/05/2011</p> <p>Rev : A</p> <p>Size : A2</p> <p>Colour : Colourless</p> <p>Status : Production</p> <p>Sheet : 1 of 1</p>
--	---	---